

WICHITA FALLS, TEXAS

# HI-TACAN RWY 33L

TACAN SHP Chan 45	APCH CRS 334°	Rwy ldg 13,100 TDZE 1000 Arprt Elev 1019
----------------------	------------------	--

[USAF]

SHEPPARD AFB/WICHITA FALLS MUNI (KSPS)

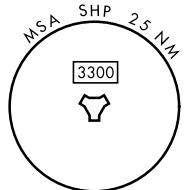
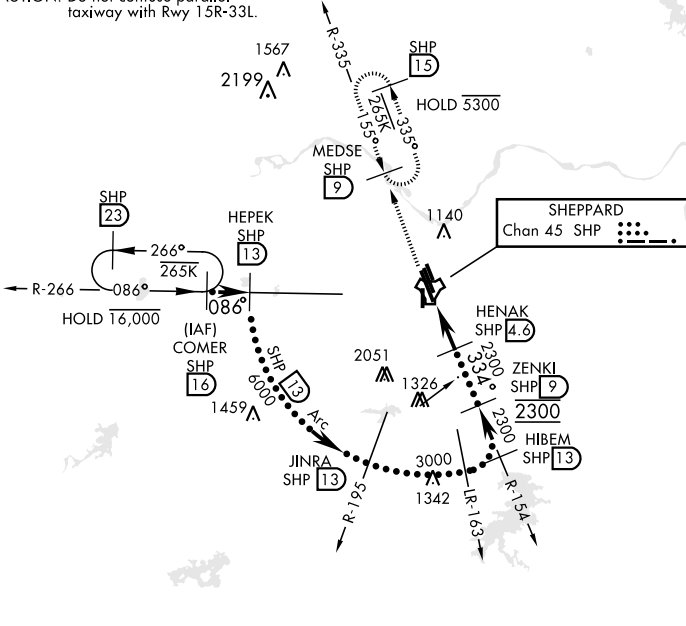
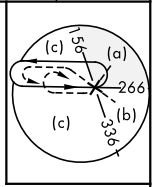
▼ \* When ALS inop, increase CAT CDE vis to 1½ miles.  
 \*\* Circling not authorized W of Rwy 15R-33L.



MISSED APPROACH: Climb and maintain 3300, intercept SHP TACAN R-335 to SHP R-335/9 DME (MEDSE) and hold.

ATIS * 132.05 269.9	APP CON 118.2 269.025	TOWER * 119.75 0 279.525 (CTAF)	GND CON 125.5 289.4	CLNC DEL 121.2 282.225	ASR
------------------------	--------------------------	------------------------------------	------------------------	---------------------------	-----

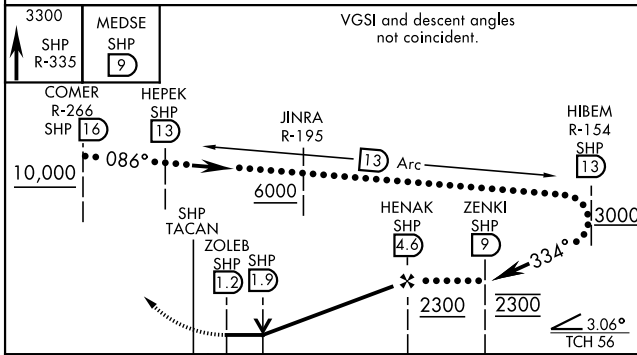
CAUTION: Do not confuse parallel taxiway with Rwy 15R-33L.



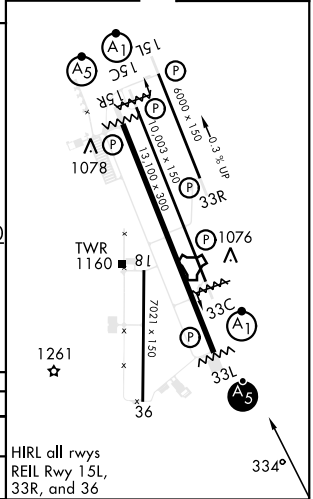
SC-2, 26 DEC 2024 to 23 JAN 2025

SC-2, 26 DEC 2024 to 23 JAN 2025

1407  
EMERG SAFE ALT 100 NM 4600



ELEV	1019	TDZE	1000
------	------	------	------



CATEGORY	C	D	E
S-33L *	1420-¾	420 (500-¾)	
**CIRCLING	1480-1½ 461 (500-1½)	2020-3 1001 (1100-3)	2080-3 1061 (1100-3)

HIRL all rwys  
 REIL Rwy 15L,  
 33R, and 36

WICHITA FALLS, TEXAS

33°59'N-98°30'W

SHEPPARD AFB/WICHITA FALLS MUNI (KSPS)

Amdt 6 14JUL22

# HI-TACAN RWY 33L