

WICHITA FALLS, TEXAS

ILS or LOC/DME RWY 15C

LOC I-SHP 110.5	APCH CRS 153°	Rwy ldg 15C 10,003 15R 13,100 TDZE 15C 1003 15R 998 Arprt Elev 1019
---------------------------	-------------------------	--

[USAF]

SHEPPARD AFB/
WICHITA FALLS MUNI (KSPS)

DME required.

▼ * When ALS inop, increase all CATs vis to ¾ mile.
 ** When ALS inop, increase CAT AB vis to 1 mile,
 CAT CDE vis to 1½ miles.



MISSED APPROACH: Climb and maintain 3100, intercept SHP TACAN R-155 to SHP R-155/9 DME (JIVIT) and hold.

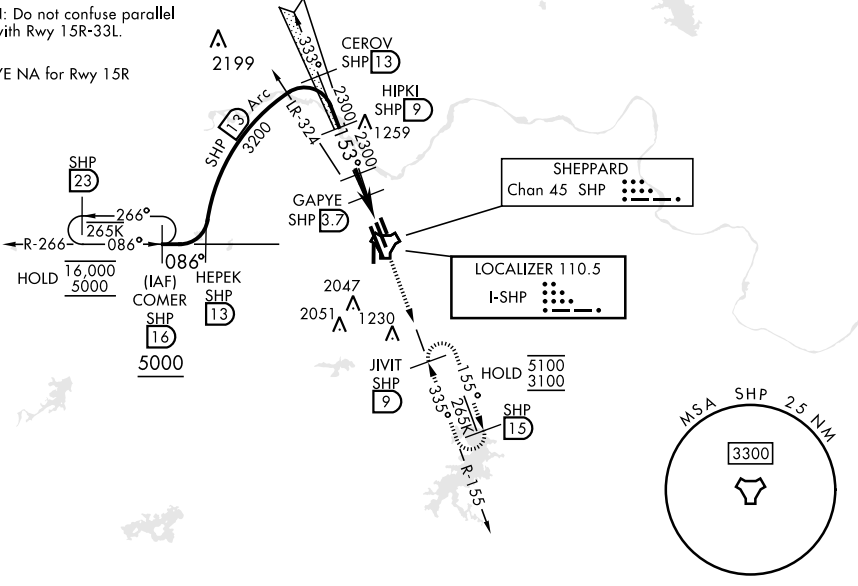
ATIS ★ 132.05 269.9	APP CON 118.2 269.025	TOWER ★ 119.75 279.525 (CTAF)	GND CON 125.5 289.4	CLNC DEL 121.2 282.225	ASR
-------------------------------	---------------------------------	---	-------------------------------	----------------------------------	-----

*** When ALS inop, increase CAT AB vis to 1 mile,
 CAT CDE vis to 1¼ miles.

† Circling not authorized W of Rwy 15R-33L.

CAUTION: Do not confuse parallel taxiway with Rwy 15R-33L.

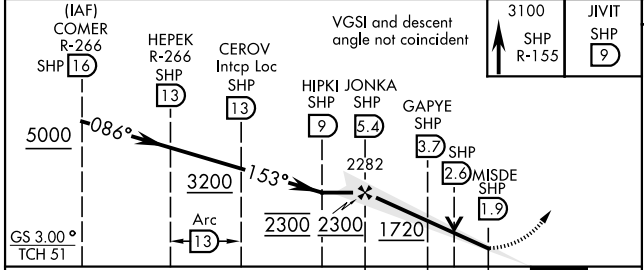
SDF GAPYE NA for Rwy 15R



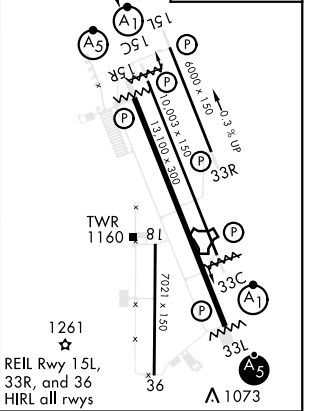
SC-2, 26 DEC 2024 to 23 JAN 2025

SC-2, 26 DEC 2024 to 23 JAN 2025

1407 EMERG SAFE ALT 100 NM 4600



ELEV 1019	TDZE 15C 1003
153°	TDZE 15R 998



CATEGORY	A	B	C	D	E
S-ILS 15C *	1203-½		200	(200-½)	
S-LOC/ DME 15C **	1420-½	417 (500-½)	1420-¾	417	(500-¾)
SIDESTEP 15R ***	1420-½	422 (500-½)	1420-¾	422	(500-¾)
CIRCLING†	1440-1 421 (500-1)	1480-1 461 (500-1)	1480-1½ 461 (500-1½)	2020-3 1001 (1100-3)	2080-3 1061 (1100-3)

WICHITA FALLS, TEXAS 33°59'N-98°30'W

SHEPPARD AFB/WICHITA FALLS MUNI (KSPS)

Amtd 9 08SEP22

ILS or LOC/DME RWY 15C