

WICHITA FALLS, TEXAS

RNAV (GPS) RWY 15C

APCH CRS 153°	Rwy Idg 10.003 TDZE 1003 Arprt Elev 1019
-------------------------	---

[USAF]

SHEPPARD AFB/WICHITA FALLS MUNI (KSPS)

RNP APCH-GPS

ALSIF-1

MISSED APPROACH: Climb to 3100 direct DILGR and hold.

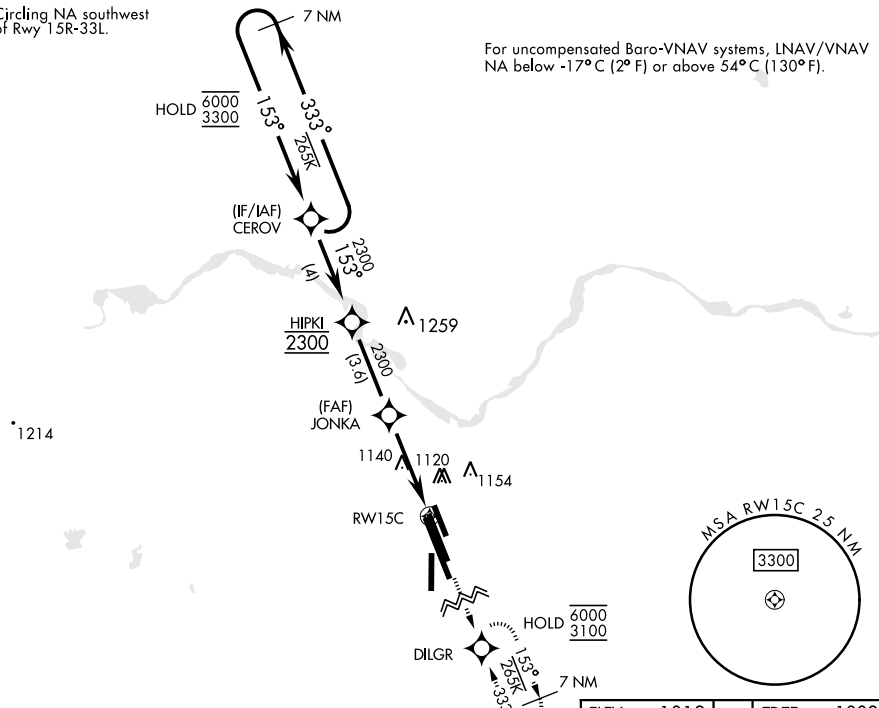
▼ * When ALS inop, increase vis to $\frac{7}{8}$ mile.
 ** When ALS inop, increase CAT AB vis to 1 mile, CAT CDE vis to $1\frac{1}{8}$ miles.

ATIS ★ 132.05 269.9	APP CON 118.2 269.025	TOWER ★ 119.75 0 279.525 (CTAF)	GND CON 125.5 289.4	CLNC DEL 121.2 282.225	ASR
-------------------------------	---------------------------------	---	-------------------------------	----------------------------------	-----

*** Circling NA southwest of Rwy 15R-33L.

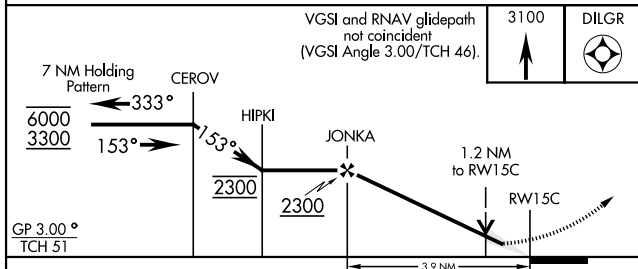
For uncompensated Baro-VNAV systems, LNAV/VNAV NA below -17°C (2° F) or above 54°C (130° F).

SC-2, 26 DEC 2024 to 23 JAN 2025

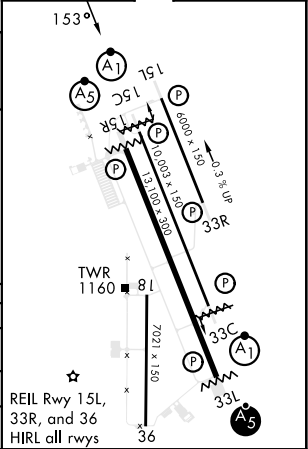


SC-2, 26 DEC 2024 to 23 JAN 2025

EMERG SAFE ALT 100 NM 4600



ELEV	1019	TDZE	1003
------	------	------	------



CATEGORY	A		B		C		D		E	
	LNAV/VNAV DA*	1266- $\frac{1}{2}$	1277- $\frac{1}{2}$	1285- $\frac{1}{2}$	1296- $\frac{1}{2}$	293	(300- $\frac{1}{2}$)			
LNAV MDA**	1420- $\frac{1}{2}$	417	(500- $\frac{1}{2}$)		1420- $\frac{3}{4}$		417		(500- $\frac{3}{4}$)	
*** CIRCLING	401	(500-1)	461	(500-1)	461	(500- $\frac{1}{2}$)	1001	(1100-3)	1061	(1100-3)

WICHITA FALLS, TEXAS

33°59'N-98°30'W

SHEPPARD AFB/WICHITA FALLS MUNI (KSPS)

Amdt 2 21MAR24

RNAV (GPS) RWY 15C