

# RNAV (GPS) RWY 33L

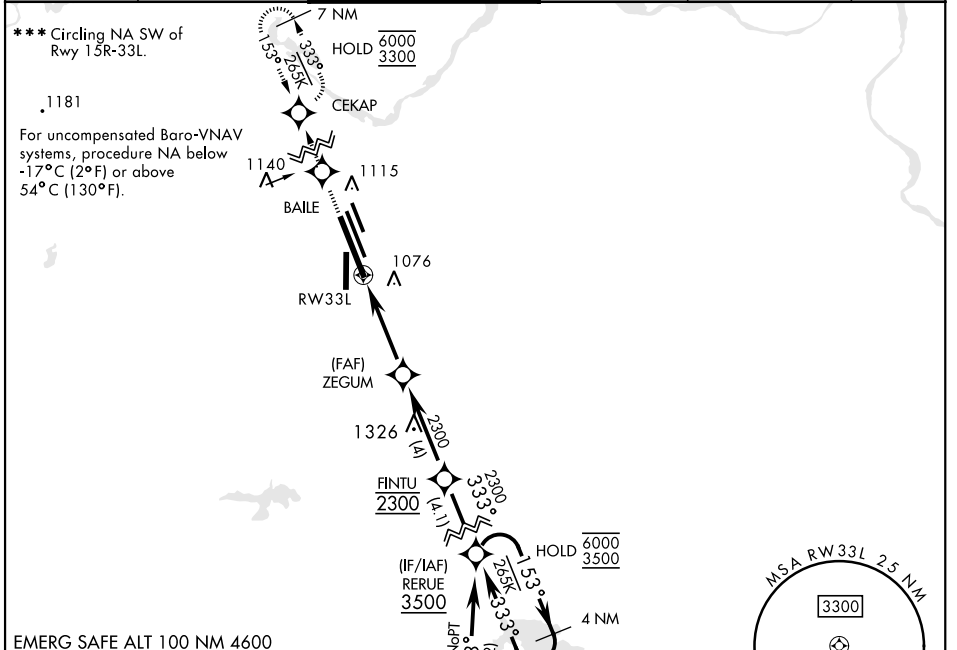
APCH CRS <b>333°</b>	Rwy ldg <b>13.100</b>
	TDZE <b>1000</b>
	Arprt Elev <b>1019</b>

[USAF]

SHEPPARD AFB/WICHITA FALLS MUNI (KSPS)

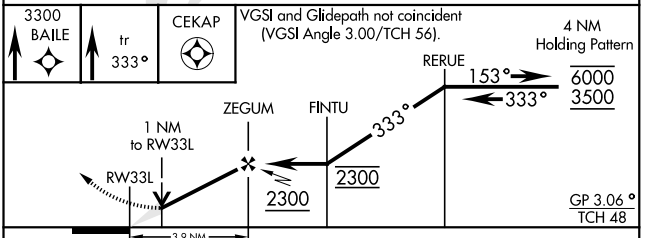
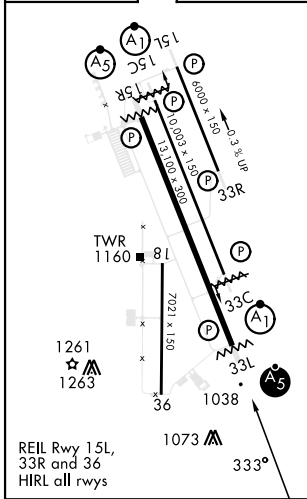
RNP APCH-GPS		MALSR	
<p>▼ * When ALS inop, increase vis to ¾ mile. ** When ALS inop, increase vis to 1 mile.</p>		<p>MISSED APPROACH: Climb to 3300 direct BAILE, track 333° to CEKAP and hold.</p>	

ATIS★ <b>132.05 269.9</b>	APP CON <b>118.2 269.025</b>	TOWER★ <b>119.75 0 279.525</b> (CTAF)	GND CON <b>125.5 289.4</b>	CLNC DEL <b>121.2 282.225</b>	ASR
------------------------------	---------------------------------	--	-------------------------------	----------------------------------	-----



EMERG SAFE ALT 100 NM 4600

ELEV	1019	TDZE	1000
------	------	------	------



CATEGORY	A	B	C	D	E
LNAV/VNAV DA *	1255-½		255	(300-½)	
LNAV MDA **	1340-½		340	(400-½)	
CIRCLING ***	1440-1	1480-1	1480-1½	2020-3	2080-3
	421 (500-1)	461 (500-1)	461 (500-1½)	1001 (1100-3)	1061 (1100-3)

# RNAV (GPS) RWY 33L

SC-2, 26 DEC 2024 to 23 JAN 2025

SC-2, 26 DEC 2024 to 23 JAN 2025