

WAAS CH 86624 W07A	APP CRS 066°	Rwy Idg TDZE 544 Apt Elev 544	3375 544 544
--	------------------------	---	---

RNAV (GPS) RWY 7

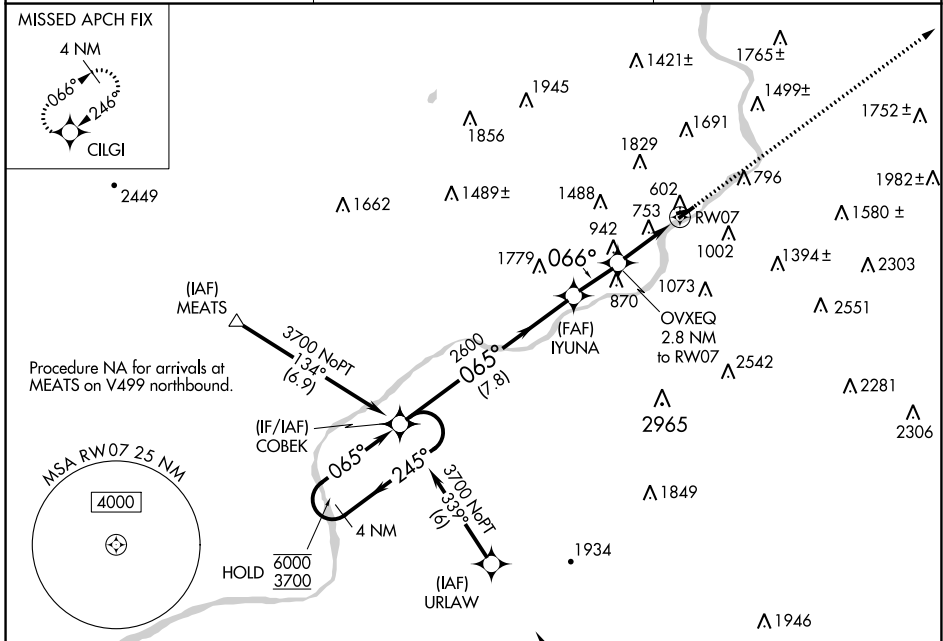
WILKES-BARRE WYOMING VALLEY (WBW)

RNP APCH - GPS.

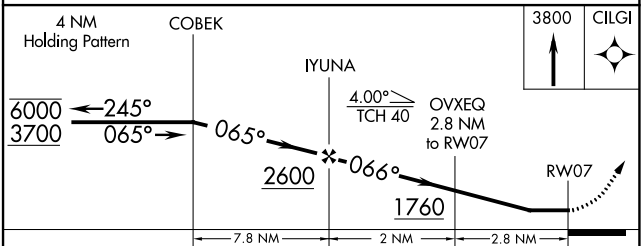
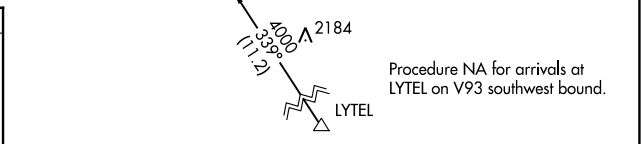
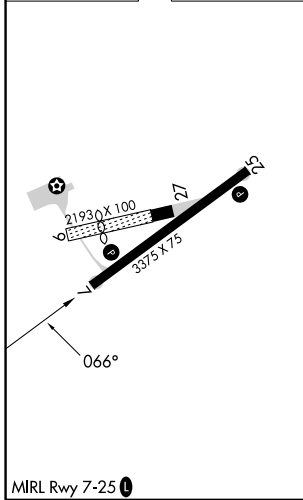
▼ **NA** Rwy 7 helicopter visibility reduction below 3/4 SM NA. Circling NA to Rwys 9 and 27. Use AVP altimeter setting. Circling NA northwest of Rwy 7-25.

MISSED APPROACH: Climb to 3800 direct CILGI and hold, continue climb-in-hold to 3800.

AVP ASOS 135.75	WILKES-BARRE APP CON 126.3 256.7	UNICOM 122.8 (CTAF)
---------------------------	--	-------------------------------



ELEV 544	TDZE 544
-----------------	-----------------



CATEGORY	A	B	C	D
LP MDA	1160-1	616 (700-1)		NA
LNAV MDA	1300-1 756 (800-1)	1300-1¼ 756 (800-1¼)		NA
CIRCLING	1320-1 776 (800-1)	1380-1¼ 836 (900-1¼)		NA

NE-4, 26 DEC 2024 to 23 JAN 2025

NE-4, 26 DEC 2024 to 23 JAN 2025