

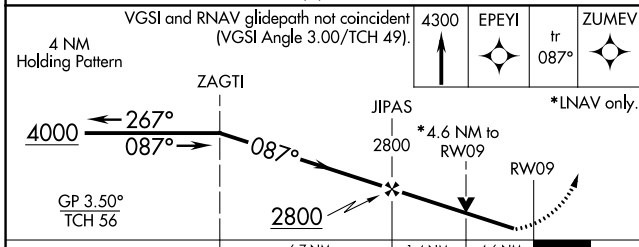
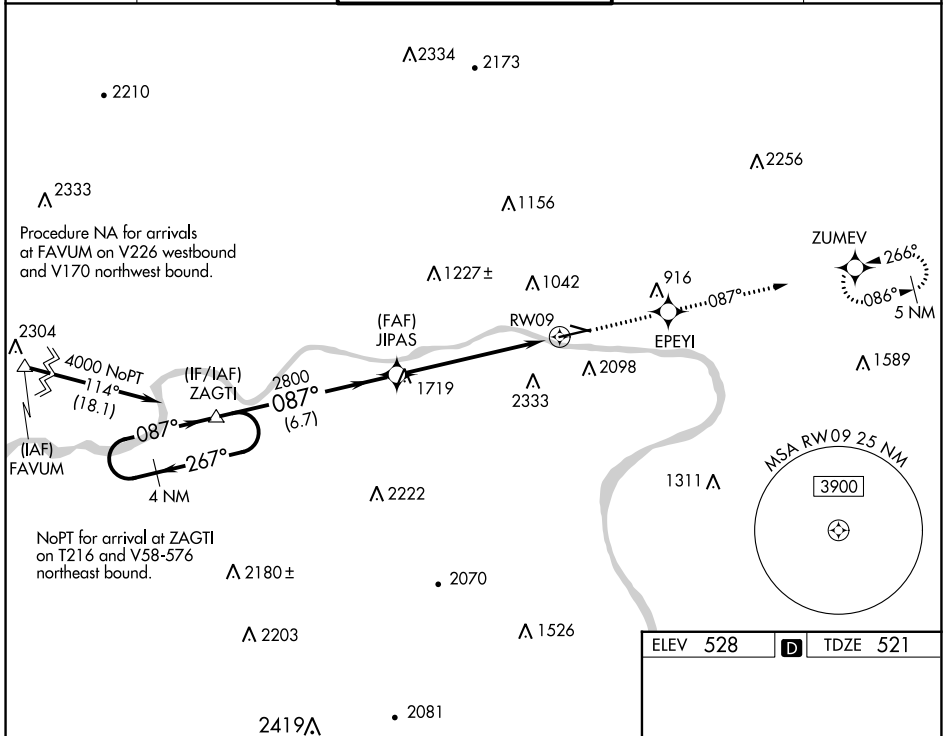
WAAS CH <b>86924</b> <b>W09A</b>	APP CRS <b>087°</b>	Rwy ldg <b>6073</b> TDZE <b>521</b> Apt Elev <b>528</b>
--	------------------------	---

# RNAV (GPS) RWY 9

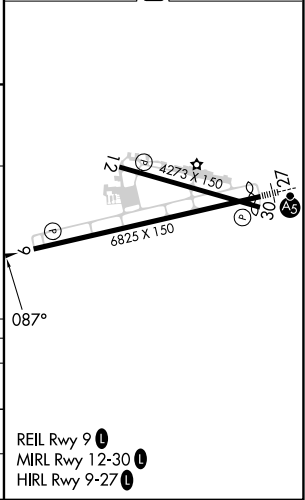
WILLIAMSPORT RGNL (IPT)

DME/DME RNP-0.3 NA. Circling Rwy 12, 30 NA at night. Circling NA south of Rwy 9 and southwest of Rwy 30. Rwy 9 helicopter visibility reduction below 3/4 SM NA.	MISSED APPROACH: Climb to 4300 direct EPEYI and on track 087° to ZUMEV and hold, continue climb-in-hold to 4300.
--	--

ASOS <b>125.225</b>	NEW YORK CENTER <b>124.9</b>	WILLIAMSPORT TOWER * <b>119.1</b> (CTAF) <b>257.8</b>	GND CON <b>121.9</b>	UNICOM <b>122.95</b>
------------------------	---------------------------------	--	-------------------------	-------------------------



ELEV 528		TDZE 521
----------	--	----------



CATEGORY	A	B	C	D
LPV DA	1036-1½ 515 (600-1½)			NA
LNVA MDA	2040-1¼ 1519 (1600-1¼)	2040-1½ 1519 (1600-1½)	2040-3 1519 (1600-3)	NA
CIRCLING	2040-1¼ 1512 (1600-1¼)	2040-1½ 1512 (1600-1½)	2040-3 1512 (1600-3)	NA

REIL Rwy 9   
 MIRL Rwy 12-30   
 HIRL Rwy 9-27

NE-4, 26 DEC 2024 to 23 JAN 2025

NE-4, 26 DEC 2024 to 23 JAN 2025