

WAAS CH 82115 W19A	APP CRS 195°	Rwy ldg 7012 TDZE 71 Apt Elev 80
--	------------------------	---

RNAV (GPS) RWY 19

NEW CASTLE (ILG)

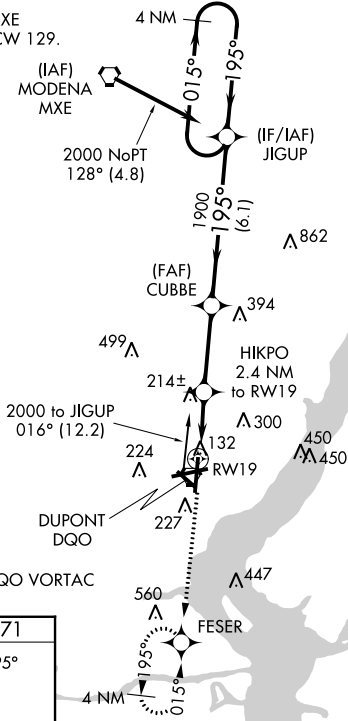
▼ Baro-VNAV NA when using Philadelphia Intl altimeter setting. For uncompensated Baro-VNAV systems, LNAV/VNAV NA below -15°C (5°F) or above 49°C (120°F). DME/DME RNP-0.3 NA.

▲ Visibility reduction by helicopters NA. When local altimeter setting not received, use Philadelphia Intl altimeter setting: increase LPV DA to 425, LNAV/VNAV DA to 592, and all MDAs 60 feet; increase LPV all Cats and LNAV and Circling Cat D visibility ¼ SM.

MISSED APPROACH:
Climb to 2000 direct
FESER and hold.

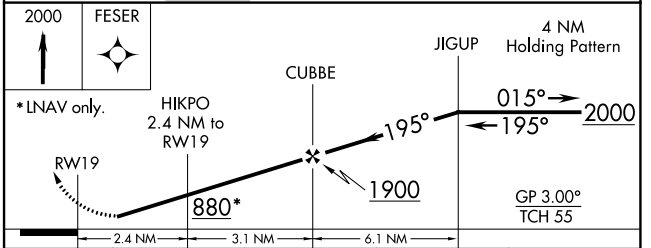
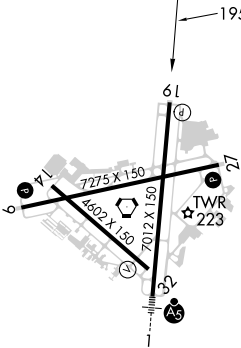
ATIS 123.95	PHILADELPHIA APP CON 118.35 323.1	WILMINGTON TOWER* 126.0 (CTAF) 352.05	GND CON 121.7 275.8	CLNC DEL 119.95	UNICOM 122.95
-----------------------	---	---	-------------------------------	---------------------------	-------------------------

Procedure NA for arrival on MXE
VORTAC airway radials 056 CW 129.



Procedure NA for arrival on DQO VORTAC
airway radials 053 CW 068.

ELEV 80	D	TDZE 71
---------	----------	---------



CATEGORY	A	B	C	D
LPV DA	371-1 300 (300-1)			
LNAV/VNAV DA	538-1¾ 467 (500-1¾)			
LNAV MDA	480-1	409 (400-1)	480-1¼	409 (400-1¼)
CIRCLING	540-1 460 (500-1)	560-1 480 (500-1)	600-1½ 520 (600-1½)	800-2¼ 720 (800-2¼)

REIL Rwy 9, 19 and 27
HIRL Rwy 1-19 and 9-27
MIRL Rwy 14-32