

VORTAC DQO 114.0 Chan 87	APP CRS 261°	Rwy Idg 7000 TDZE 72 Apt Elev 80
--	------------------------	---

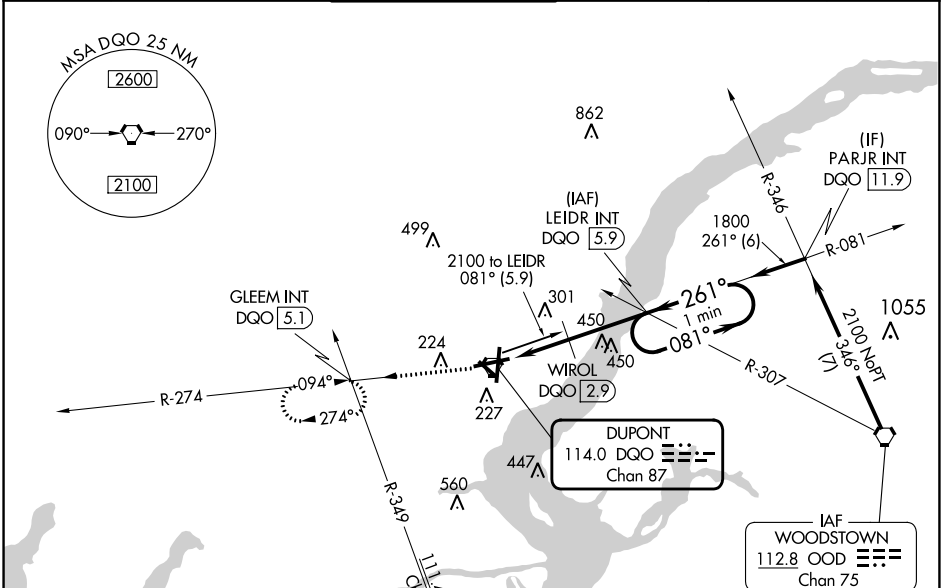
VOR RWY 27

NEW CASTLE (ILG)

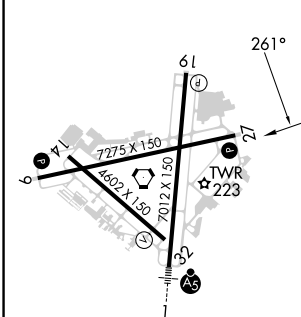
⚠ Helicopter visibility reduction below 3/4 SM NA. When local altimeter setting not received, use Philadelphia Intl altimeter setting and increase all MDAs 60 feet; increase S-27 Cat B and Circling Cat C/D visibility 1/4 SM and S-27 Cat C/D visibility 1/2 SM; WIROL fix minimums S-27 increase Cat C/D and Circling Cat D visibility 1/4 SM.

MISSED APPROACH: Climb to 2000 on DQO VORTAC R-274 to GLEEM INT/DQO 5.1 DME and hold.

ATIS 123.95	PHILADELPHIA APP CON 118.35 323.1	WILMINGTON TOWER * 126.00 (CTAF) 352.05	GND CON 121.7 275.8	CLNC DEL 119.95	UNICOM 122.95
-----------------------	---	---	-------------------------------	---------------------------	-------------------------



ELEV 80	D	TDZE 72
---------	----------	---------



REIL Rwy 9, 19 and 27 **Ⓛ**
 HIRL Rwy 1-19 and 9-27 **Ⓛ**
 MIRL Rwy 14-32 **Ⓛ**

FAF to MAP 5.9 NM

Knots	60	90	120	150	180
Min:Sec	5:54	3:56	2:57	2:22	1:58

CATEGORY	A	B	C	D
	S-27	800-1 728 (800-1)	800-2 728 (800-2)	
CIRCLING	800-1 720 (800-1)	800-2 720 (800-2)	800-2 720 (800-2 1/4)	800-2 720 (800-2 1/4)
	WIROL FIX MINIMUMS (DME REQUIRED)			
S-27	560-1 488 (500-1)	560-1 3/8 488 (500-1 3/8)		
CIRCLING	560-1 480 (500-1)	600-1 1/2 520 (600-1 1/2)	800-2 1/4 720 (800-2 1/4)	

* 860 when using Philadelphia Intl altimeter setting.

NE-3, 26 DEC 2024 to 23 JAN 2025

NE-3, 26 DEC 2024 to 23 JAN 2025