

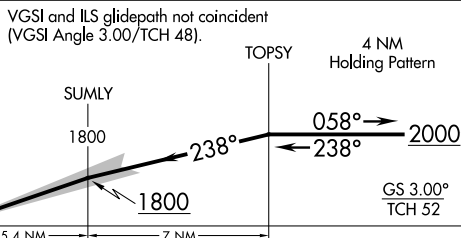
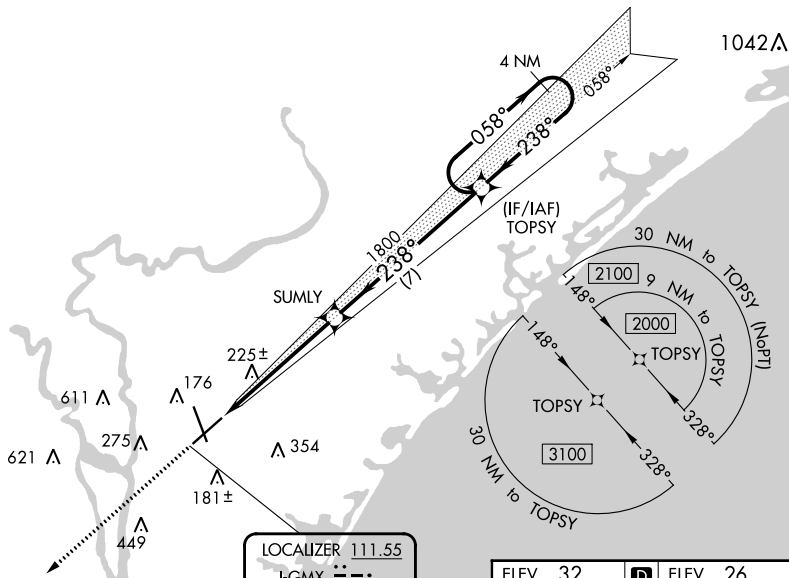
LOC I-GMX 111.55	APP CRS 238°	Rwy Idg 8016 TDZE 26 Apt Elev 32
----------------------------	------------------------	---

ILS Z RWY 24

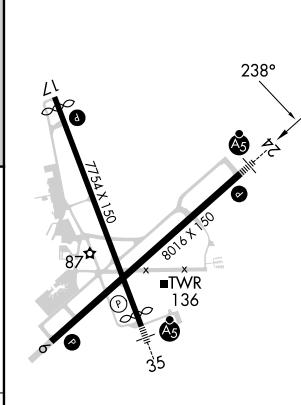
WILMINGTON INTL (ILM)

RNAV 1-GPS required. **RVR 1800 authorized with use of FD or AP or HUD to DA.		MALSR 	MISSED APPROACH: Climb to 3100 direct LURKY and hold.		
ATIS 124.975	WILMINGTON APP CON* 118.25 284.65 (164°-343°) 135.75 317.425 (344°-163°)	WILMINGTON TOWER* 119.9 (CTAF) 0 239.3	GND CON 121.9 348.6	CLNC DEL 120.875	UNICOM 122.95

RNAV 1-GPS or RADAR REQUIRED



ELEV 32	D	ELEV 26
---------	---	---------



CATEGORY	A	B	C	D
S-ILS 24**	226/24		200 (200-1/2)	

HIRL Rwy 6-24 and 17-35
REL Rwy 6 and 17

SE-2, 26 DEC 2024 to 23 JAN 2025

SE-2, 26 DEC 2024 to 23 JAN 2025