

WAAS CH 86599 W06A	APP CRS 058°	Rwy Idg 8016 TDZE 28 Apt Elev 32
--	------------------------	---

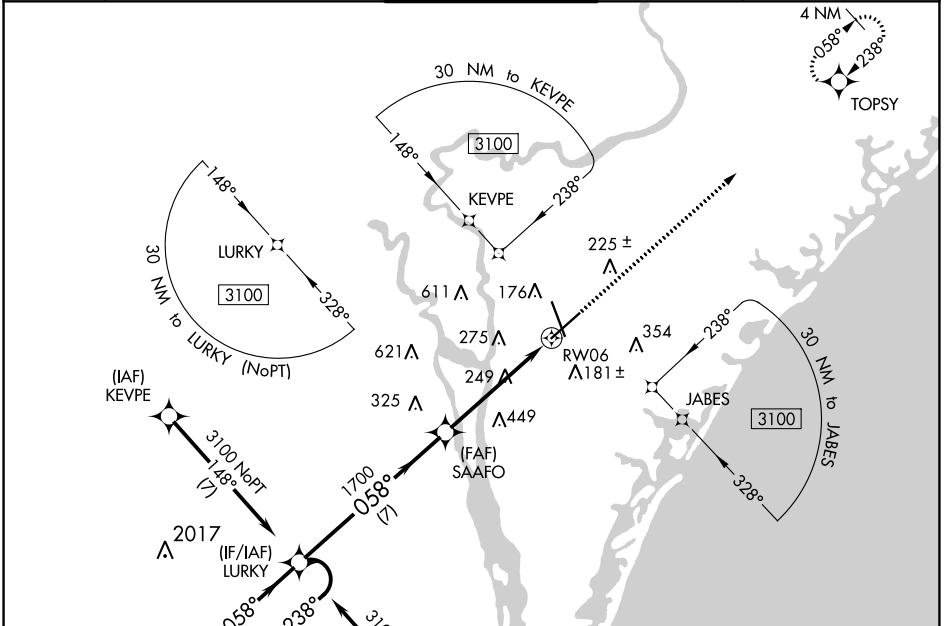
RNAV (GPS) RWY 6

WILMINGTON INTL (ILM)

⚠ For uncompensated Baro-VNAV systems, LNAV/VNAV NA below -7°C (20°F) or above 54°C (130°F). DME/DME RNP-0.3 NA.

MISSED APPROACH: Climb to 2000 direct TOPSY and hold.

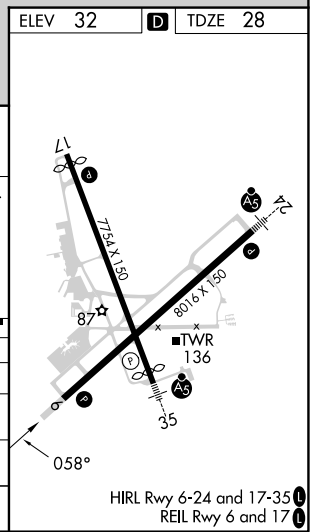
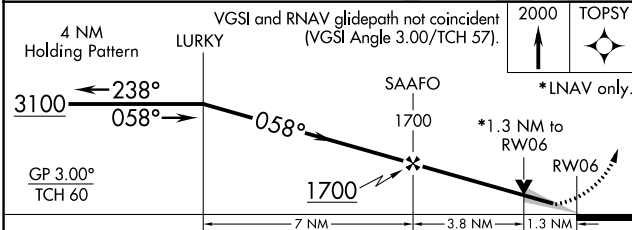
ATIS 124.975	WILMINGTON APP CON★ 118.25 284.65 (164°-343°) 135.75 317.425 (344°-163°)	WILMINGTON TOWER★ 119.9 (CTAF) 0 239.3	GND CON 121.9 348.6	CLNC DEL 120.875	UNICOM 122.95
------------------------	--	---	-------------------------------	----------------------------	-------------------------



SE-2, 26 DEC 2024 to 23 JAN 2025

SE-2, 26 DEC 2024 to 23 JAN 2025

ELEV 32	D TDZE 28
---------	------------------



CATEGORY	A	B	C	D
LPV DA		228/40	200 (200-¾)	
LNAV/VNAV DA		434/60	406 (500-1½)	
LNAV MDA	500/55	472 (500-1)	500-1¾	472 (500-1¾)
C CIRCLING	560-1	528 (600-1)	720-2 688 (700-2)	920-3 888 (900-3)