

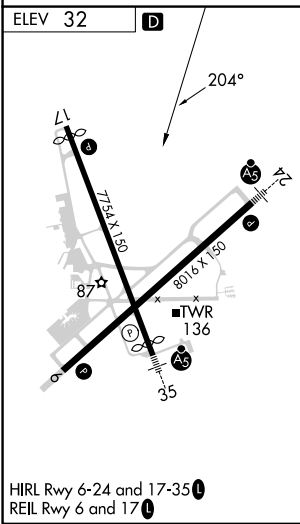
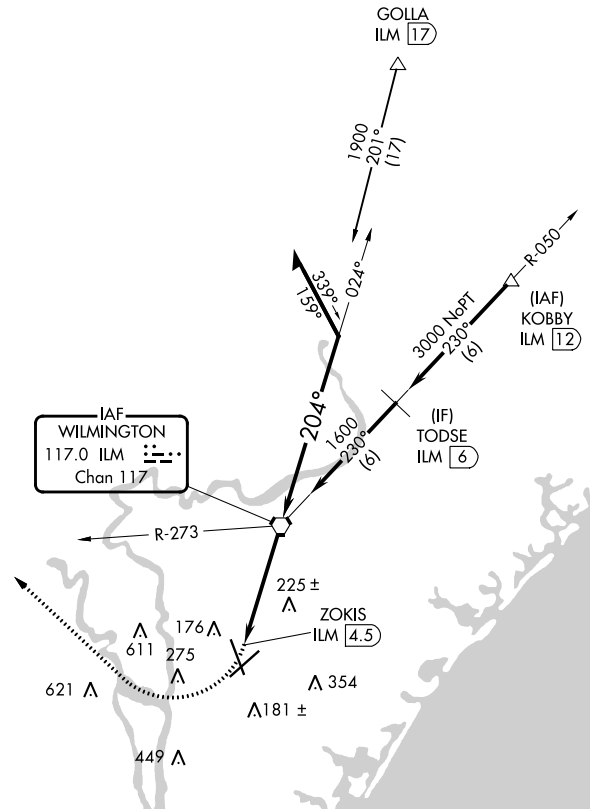
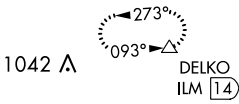
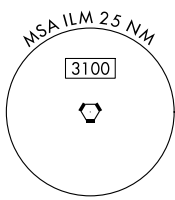
VORTAC ILM 117.0 Chan 117	APP CRS 204°	Rwy Idg TDZE Apt Elev	N/A N/A 32
---	------------------------	-----------------------------	---------------------------------------

TACAN-A

WILMINGTON INTL (ILM)

MISSED APPROACH: Climbing right turn to 3000 heading 320° and ILM R-273 to DELKO/ILM 14 DME and hold.

ATIS 124.975	WILMINGTON APP CON★ 118.25 284.65 (164°-343°) 135.75 317.425 (344°-163°)	WILMINGTON TOWER★ 119.9 (CTAF) 0 239.3	GND CON 121.9 348.6	CLNC DEL 120.875	UNICOM 122.95
------------------------	--	---	-------------------------------	----------------------------	-------------------------



3000 hdg 320°	ILM R-273	DELKO	ILM VORTAC	Remain within 10 NM
ZOKIS ILM 4.5		1600		
4.5 NM		1900		
3000	ILM R-273	DELKO	ILM VORTAC	Remain within 10 NM
ZOKIS ILM 4.5		1600		
4.5 NM		1900		
CATEGORY	A	B	C	D
<input checked="" type="checkbox"/> CIRCLING	560-1	528 (600-1)	720-2 688 (700-2)	920-3 888 (900-3)

SE-2, 26 DEC 2024 to 23 JAN 2025

SE-2, 26 DEC 2024 to 23 JAN 2025