

# AIRPORT DIAGRAM

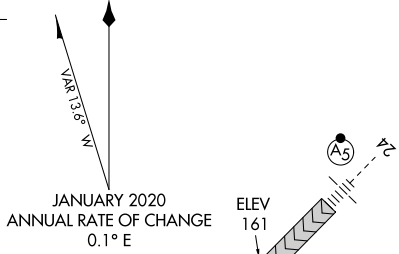
AL-460 (FAA)

BRADLEY INTL (BDL)  
WINDSOR LOCKS, CONNECTICUT

D-ATIS  
118.15  
BRADLEY TOWER  
120.3 351.8  
GND CON  
121.9 348.6  
CLNC DEL  
121.75 322.3  
CPDLC  
PDC

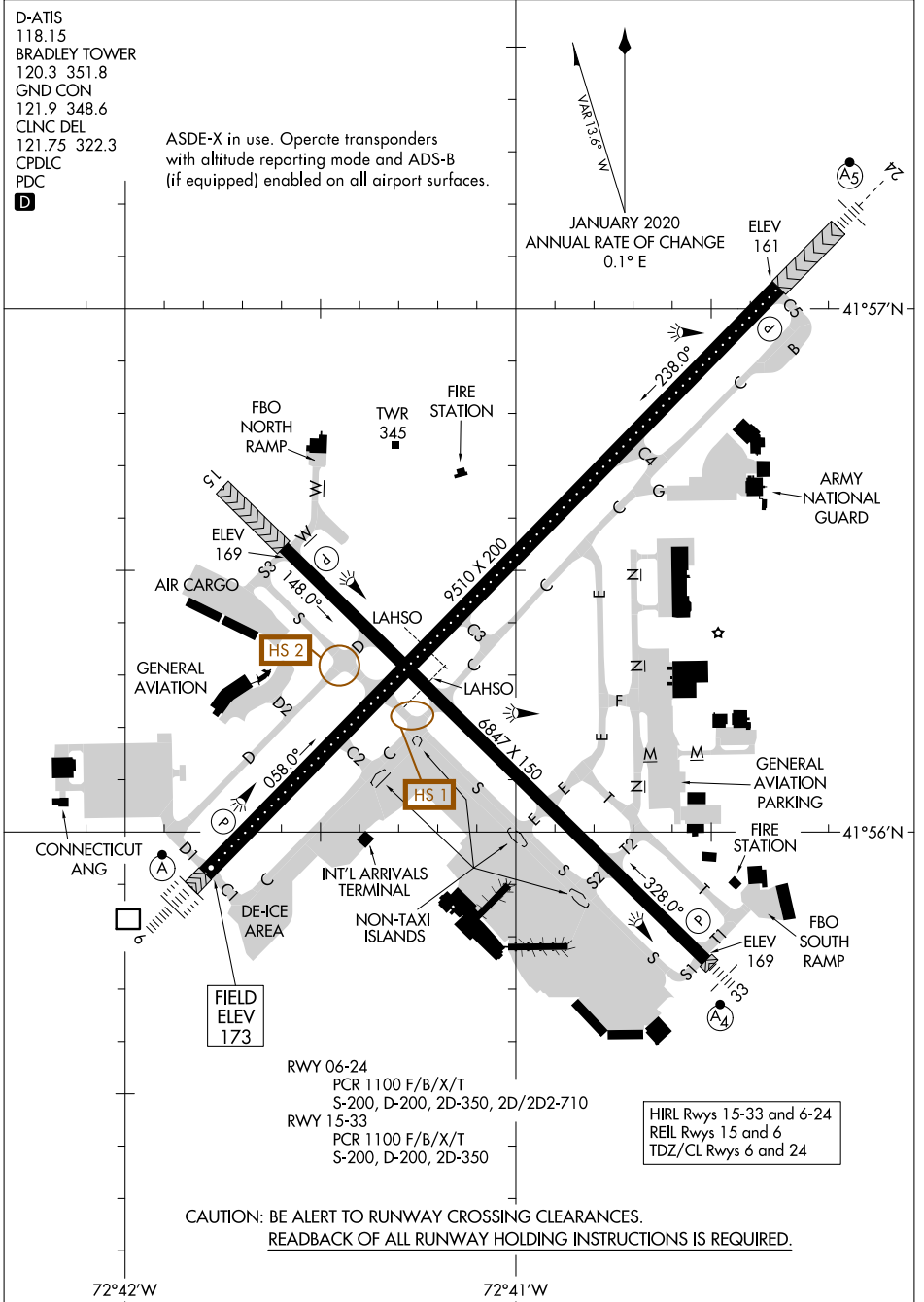


ASDE-X in use. Operate transponders with altitude reporting mode and ADS-B (if equipped) enabled on all airport surfaces.



NE-1, 26 DEC 2024 to 23 JAN 2025

NE-1, 26 DEC 2024 to 23 JAN 2025



CONNECTICUT ANG

FIELD  
ELEV  
173

RWY 06-24  
PCR 1100 F/B/X/T  
S-200, D-200, 2D-350, 2D/2D2-710  
RWY 15-33  
PCR 1100 F/B/X/T  
S-200, D-200, 2D-350

HIRL Rwy 15-33 and 6-24  
REIL Rwy 15 and 6  
TDZ/CL Rwy 6 and 24

CAUTION: BE ALERT TO RUNWAY CROSSING CLEARANCES.  
READBACK OF ALL RUNWAY HOLDING INSTRUCTIONS IS REQUIRED.

72°42'W

72°41'W