

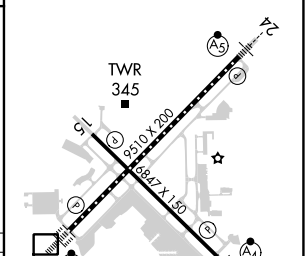
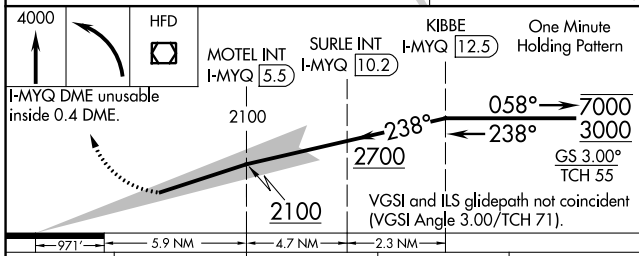
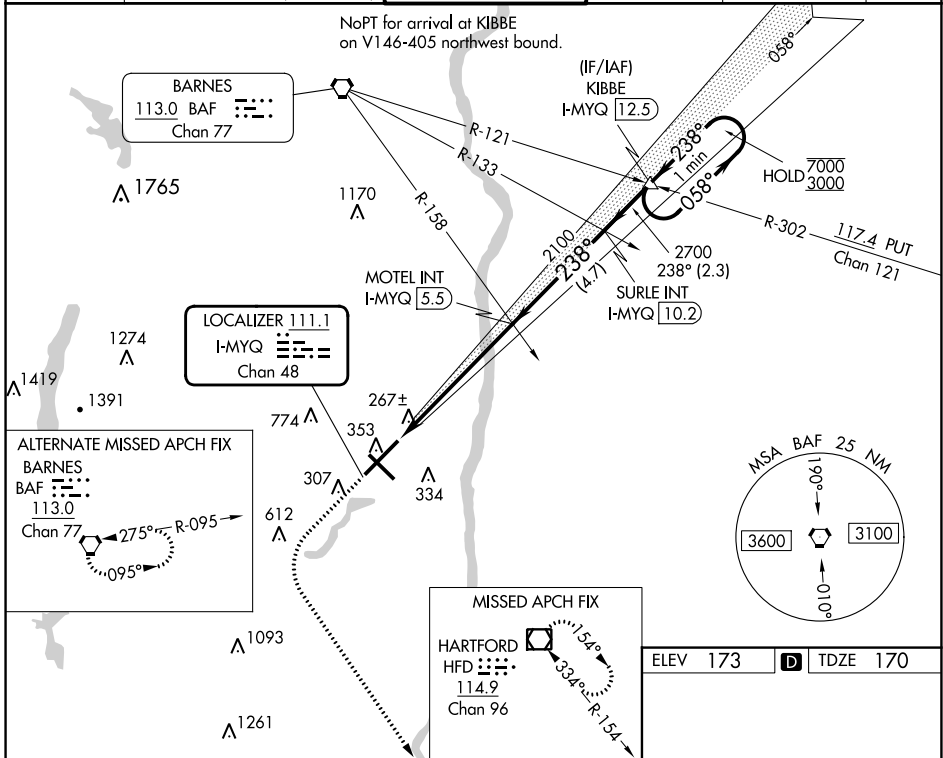
LOC/DME I-MYQ <b>111.1</b> Chan <b>48</b>	APP CRS <b>238°</b>	Rwy Idg TDZE Apt Elev	<b>9509</b> <b>170</b> <b>173</b>
---	------------------------	-----------------------------	---

# ILS RWY 24 (SA CAT I & II)

BRADLEY INTL (BDL)

<p>SA CAT I: Requires specific OPSPEC, MSPEC or LOA approval. SA CAT II: Requires specific OPSPEC, MSPEC or LOA approval.</p>	MALSR	MISSED APPROACH: Climb to 4000 then left turn direct HFD VOR/DME and hold.

D-ATIS <b>118.15</b>	BRADLEY APP CON <b>123.95 290.55</b> (061°-240°) <b>125.35 281.5</b> (241°-060°)	BRADLEY TOWER <b>120.3 351.8</b>	GND CON <b>121.9 348.6</b>	CLNC DEL <b>121.75 322.3</b>	CPDLC
-------------------------	--	-------------------------------------	-------------------------------	---------------------------------	-------



CATEGORY	A	B	C	D
S-ILS 24	SA CAT I RA 163/14	150	DA 320	
S-ILS 24	SA CAT II RA 113/12	100	DA 270	

**SA CATEGORY I & II ILS-SPECIAL AIRCREW & AIRCRAFT CERTIFICATION REQUIRED**

HIRL Rwy 6-24 and 15-33  
REIL Rwy 6 and 15  
TDZ/CL Rwy 6 and 24

NE-1, 26 DEC 2024 to 23 JAN 2025

NE-1, 26 DEC 2024 to 23 JAN 2025