

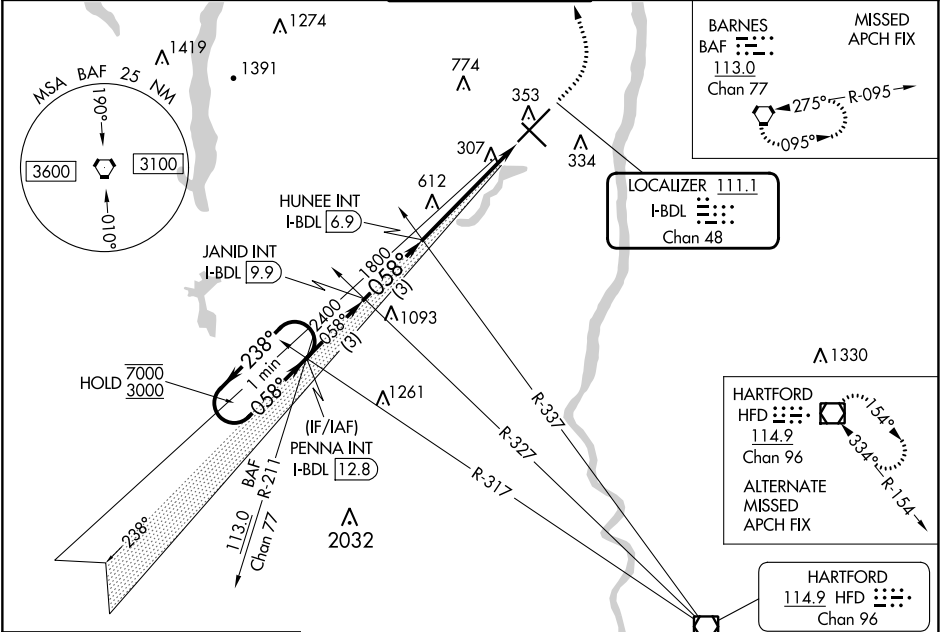
LOC/DME I-BDL <b>111.1</b> Chan <b>48</b>	APP CRS <b>058°</b>	Rwy Idg TDZE <b>173</b> Apt Elev <b>173</b>	<b>9509</b>
---	------------------------	---	-------------

# ILS RWY 6 (SA CAT I)

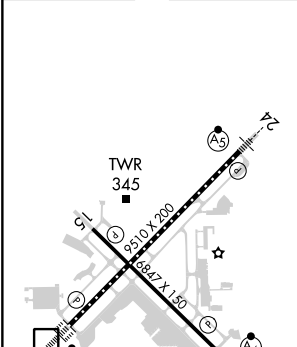
BRADLEY INTL (BDL)

RADAR required for procedure entry. ▼ Requires specific OPSPEC, MSPEC or LOA approval and use of HUD to DH.		ALSIF-2 	MISSED APPROACH: Climb to 4000 then left turn direct BAF VORTAC and hold.
--	--	-------------	---

D-ATIS <b>118.15</b>	BRADLEY APP CON <b>123.95 290.55</b> (061°-240°) <b>125.35 281.5</b> (241°-060°)	BRADLEY TOWER <b>120.3 351.8</b>	GND CON <b>121.9 348.6</b>	CINC DEL <b>121.75 322.3</b>	CPDLC
-------------------------	--	-------------------------------------	-------------------------------	---------------------------------	-------



ELEV 173	<b>D</b>	TDZE 173
----------	----------	----------



One Minute Holding Pattern	PENNA INT I-BDL 12.8	JANID INT I-BDL 9.9	HUNEE INT I-BDL 6.9	
7000 ← 238°	3000 → 058°	1800	2400	
GS 3.00° TCH 54				
3 NM      3 NM      4.9 NM      1052'				
CATEGORY	A	B	C	D
S-ILS 6	RA 151/14 150 DA 323			

**SA CATEGORY I ILS-SPECIAL AIRCREW & AIRCRAFT CERTIFICATION REQUIRED**

NE-1, 26 DEC 2024 to 23 JAN 2025

NE-1, 26 DEC 2024 to 23 JAN 2025