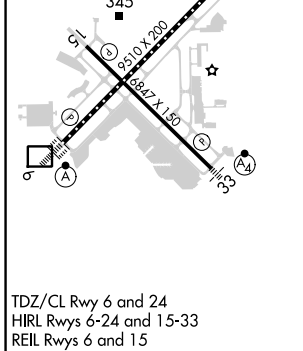
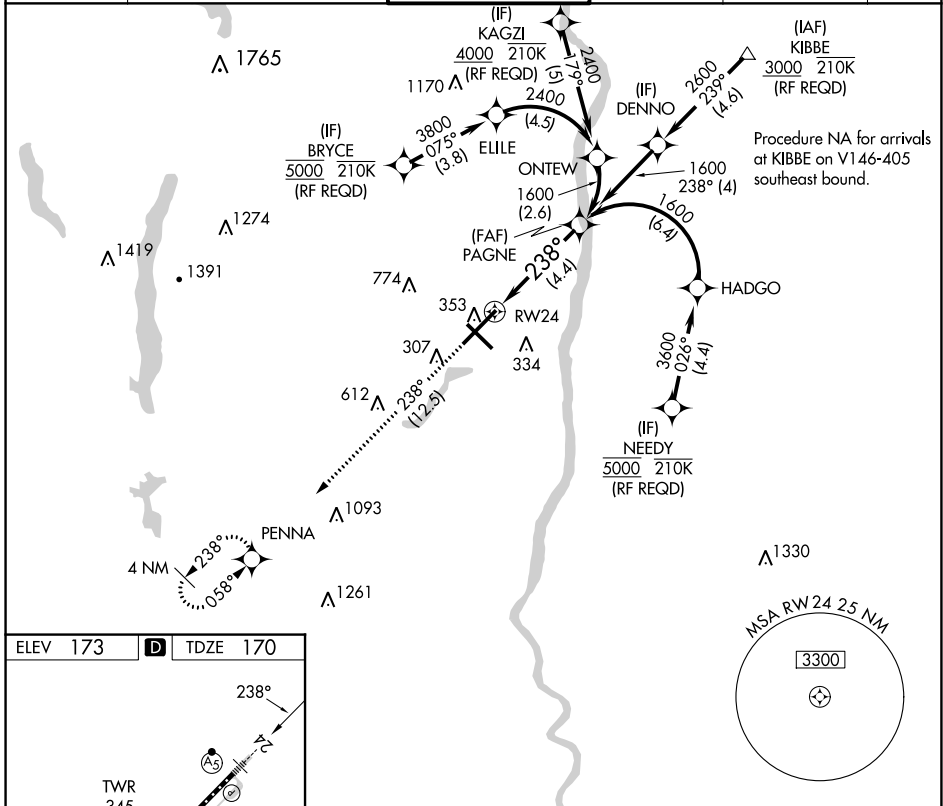


APP CRS	Rwy Idg	9509
238°	TDZE	170
	Apf Elev	173

RNAV (RNP) Z RWY 24

BRADLEY INTL (BDL)

<p>▼ For uncompensated Baro-VNAV systems, procedure NA below -18°C (0°F) or above 54°C (130°F). GPS required. For inop ALS, increase all Cats visibility to 1½ SM.</p>		<p>MALSR</p>	<p>MISSED APPROACH: Climb to 3000 on track 238° to PENNA and hold.</p>		
D-ATIS	BRADLEY APP CON	BRADLEY TOWER	GND CON	CLNC DEL	CPDLC
118.15	123.95 290.55 (061°-240°) 125.35 281.5 (241°-060°)	120.3 351.8	121.9 348.6	121.75 322.3	



3000	PENNA	VGSI and RNAV glidepath not coincident (VGSI Angle 3.00/TCH 71).	PAGNE
↑			1600
tr 238°			
RW24		238°	1600
			GP 3.00° TCH 55
See planview for multiple IF locations.			
4.4 NM			
CATEGORY	A	B	C
RNP 0.30 DA	622/60 452 (500-1½)		

AUTHORIZATION REQUIRED

NE-1, 26 DEC 2024 to 23 JAN 2025

NE-1, 26 DEC 2024 to 23 JAN 2025