

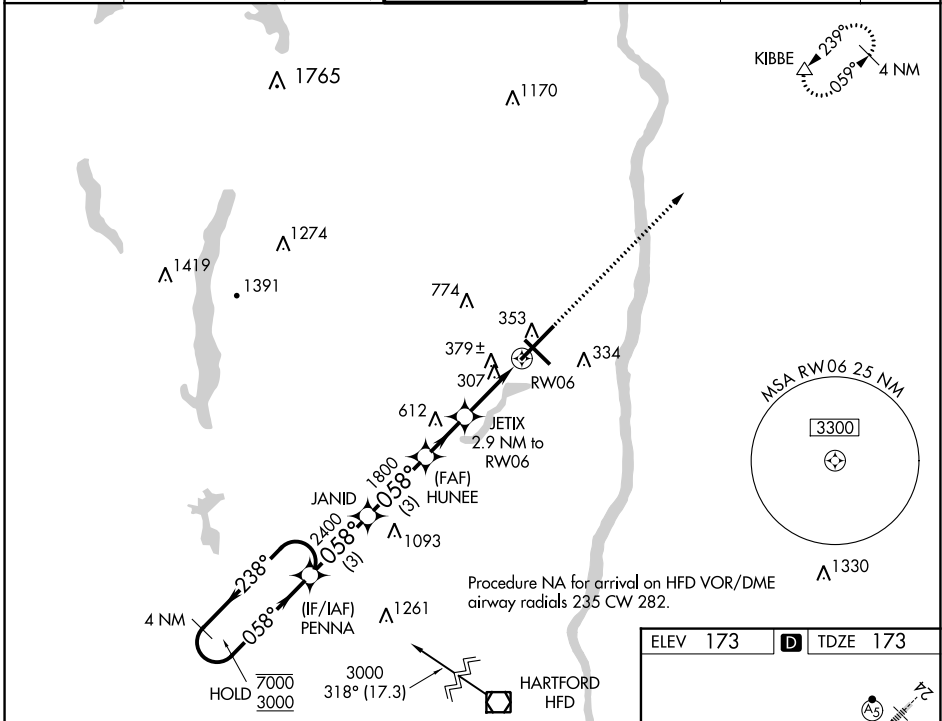
WAAS CH 70328 W06A	APP CRS 058°	Rwy Idg TDZE Apt Elev	9509 173 173
--	------------------------	-----------------------------	---

RNAV (GPS) Y RWY 6

BRADLEY INTL (BDL)

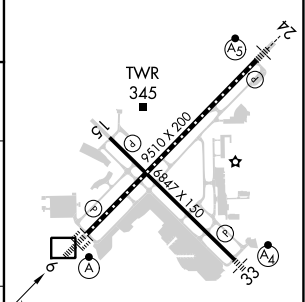
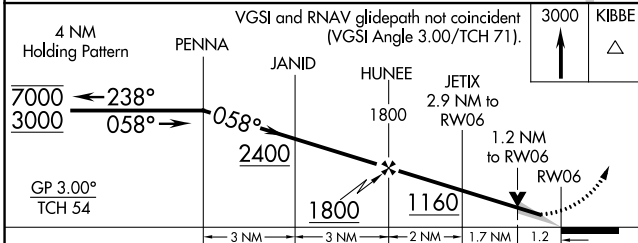
RNP APCH - GPS.		ALSF-2	MISSED APPROACH: Climb to 3000 direct KIBBE and hold.
For uncompensated Baro-VNAV systems, LNAV/VNAV NA below -17°C or above 54°C.			

D-ATIS 118.15	BRADLEY APP CON 123.95 290.55 (061°-240°) 125.35 281.5 (241°-060°)	BRADLEY TOWER 120.3 351.8	GND CON 121.9 348.6	CLNC DEL 121.75 322.3	CPDLC
-------------------------	--	-------------------------------------	-------------------------------	---------------------------------	-------



Procedure NA for arrival on HFD VOR/DME
airway radials 235 CW 282.

ELEV 173	D TDZE 173
----------	-------------------



CATEGORY	A	B	C	D
LPV DA		373/18	200 (300-½)	
LNAV/VNAV DA		640/50	467 (500-1)	
LNAV MDA	640/24	467 (500-½)	640/50	467 (500-1)
C CIRCLING	700-1	527 (600-1)	1120-2¾ 947 (1000-2¾)	1220-3 1047 (1100-3)

HIRL Rwy 6-24 and 15-33
REIL Rwy 6 and 15
TDZ/CL Rwy 6 and 24

NE-1, 26 DEC 2024 to 23 JAN 2025

NE-1, 26 DEC 2024 to 23 JAN 2025