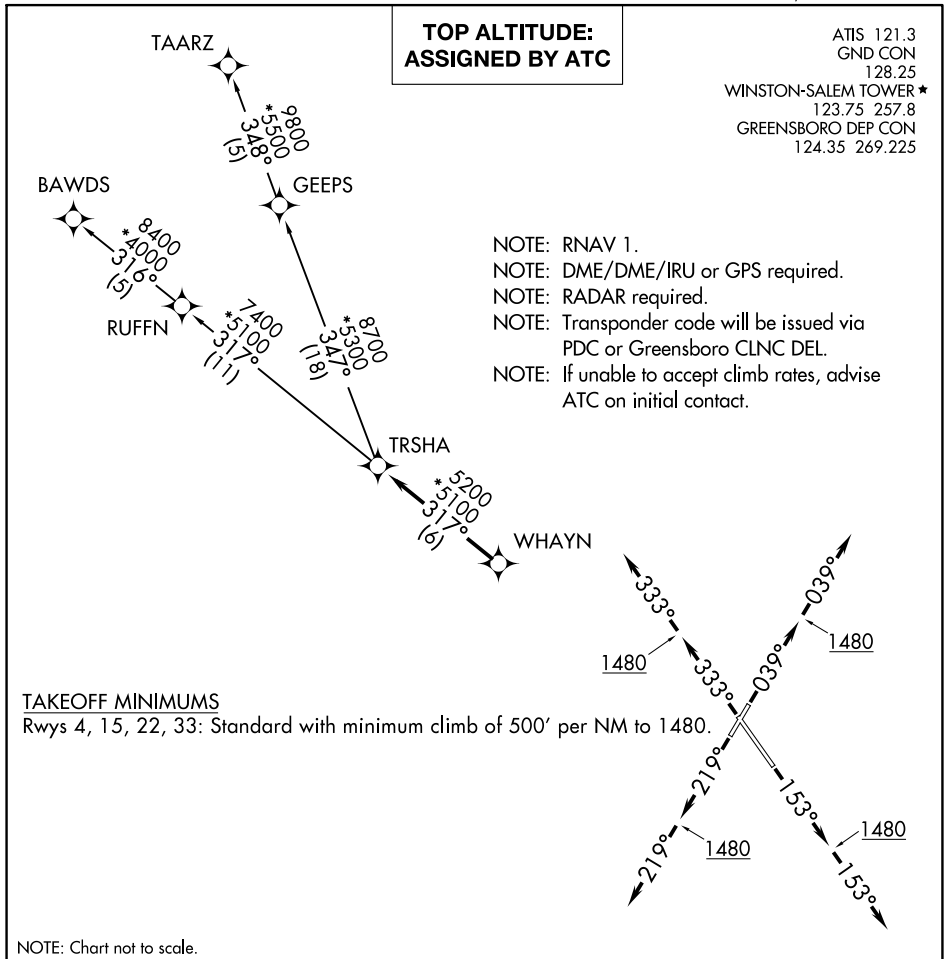


TRSHA ONE DEPARTURE (RNAV)

WINSTON SALEM, NORTH CAROLINA



SE-2, 26 DEC 2024 to 23 JAN 2025

SE-2, 26 DEC 2024 to 23 JAN 2025

DEPARTURE ROUTE DESCRIPTION

TAKEOFF RUNWAY 4: Climb heading 039° to 1480, then on heading 039°. Thence. . .

TAKEOFF RUNWAY 15: Climb heading 153° to 1480, then on heading 153°. Thence. . .

TAKEOFF RUNWAY 22: Climb heading 219° to 1480, then on heading 219°. Thence. . .

TAKEOFF RUNWAY 33: Climb heading 333° to 1480, then on heading 333°. Thence. . .

. . .expect RADAR vectors to WHAYN, then on track 317° to TRSHA, then on assigned transition. Maintain altitude assigned by ATC. Expect clearance to filed altitude within ten (10) minutes after departure.

BAWDS TRANSITION (TRSHA1.BAWDS)

TAARZ TRANSITION (TRSHA1.TAARZ)

TRSHA ONE DEPARTURE (RNAV)