

| | | |
|---|------------------------|--|
| LOC/DME I-YKM 110.1 Chan 38 | APP CRS 274° | Rwy Idg TDZE Apt Elev 7604 1068 1099 |
|---|------------------------|--|

ILS or LOC RWY 27

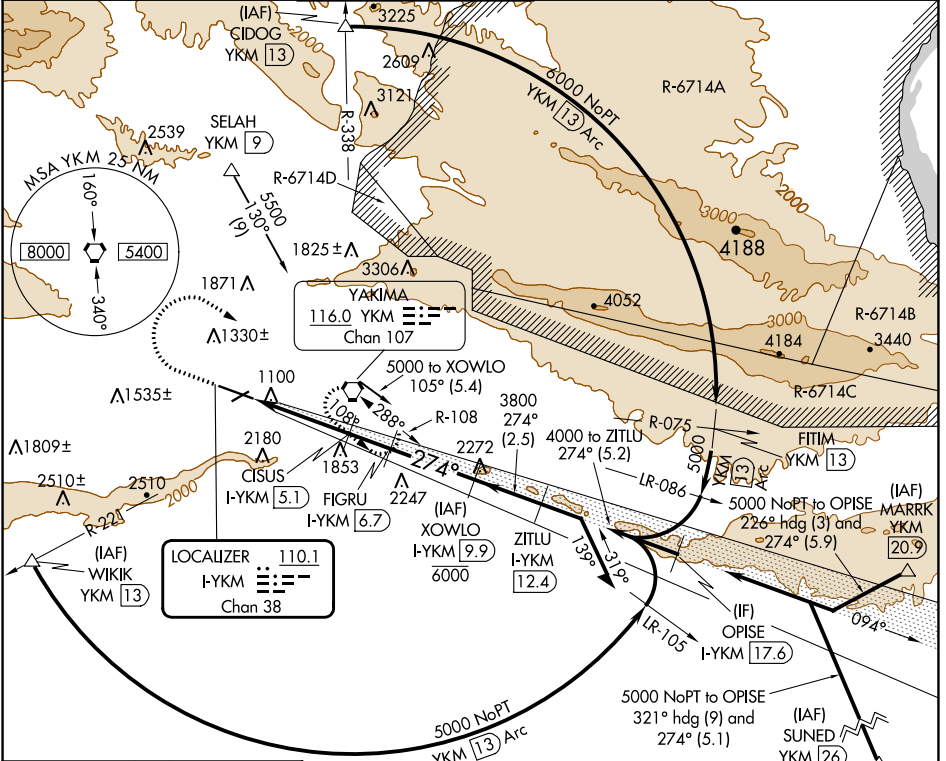
YAKIMA AIR TRML/MCALLISTER FLD (YKM)

DME required for procedure entry. DME required for LOC only.

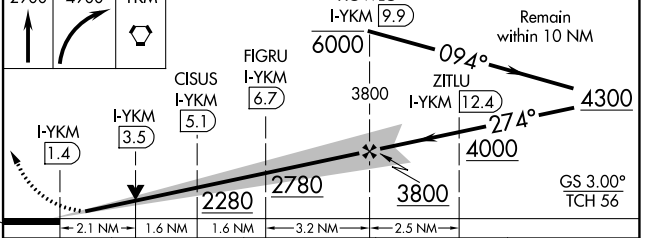
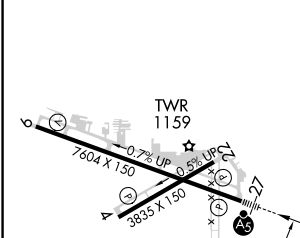
When local altimeter setting not received, procedure NA. Circling NA south of Rws 9 and 27. For inop ALS, increase S-LOC 27 Cats C/D visibility to 2 SM. For inop ALS, increase S-ILS 27 all Cats visibility to 1½ SM. #RVR 1800 authorized with use of FD or AP or HUD to DA.

MALSR MISSED APPROACH: Climb to 2900 then climbing right turn to 4900 direct YKM. VORTAC and hold, continue climb-in-hold to 4900. # Missed approach requires minimum climb of 275 feet per NM to 3600.

| | | | | | |
|-----------------------|--|--|-------------------------|--------------------------|-------------------------|
| ATIS 125.25 | SPOKANE APP CON * 123.8 263.15 | YAKIMA TOWER * 133.25 (CTAF) 0 257.8 | GND CON 121.9 | CLNC DEL 121.9 | UNICOM 122.95 |
|-----------------------|--|--|-------------------------|--------------------------|-------------------------|



| | |
|-----------|-----------|
| ELEV 1099 | TDZE 1068 |
|-----------|-----------|



| CATEGORY | A | B | C | D |
|------------|---------|-------------|--------------|---------------|
| S-ILS 27 # | | 1268/24 | 200 (200-½) | |
| S-ILS 27 | | 1713-1½ | 645 (700-1½) | |
| S-LOC 27 | 1780/24 | 712 (700-½) | 1780-1½ | 712 (700-1½) |
| CIRCLING | 1780-1 | 681 (700-1) | 1940-2½ | 2280-3 |
| | | | 841 (900-2½) | 1181 (1200-3) |

MIRL Rwy 4-22
HIRL Rwy 9-27
REIL Rws 4, 9, and 22

YAKIMA, WASHINGTON
Amdt 1B 06OCT22

YAKIMA AIR TRML/MCALLISTER FLD (YKM)
46°34'N-120°33'W

ILS or LOC RWY 27

NW-1, 26 DEC 2024 to 23 JAN 2025

NW-1, 26 DEC 2024 to 23 JAN 2025