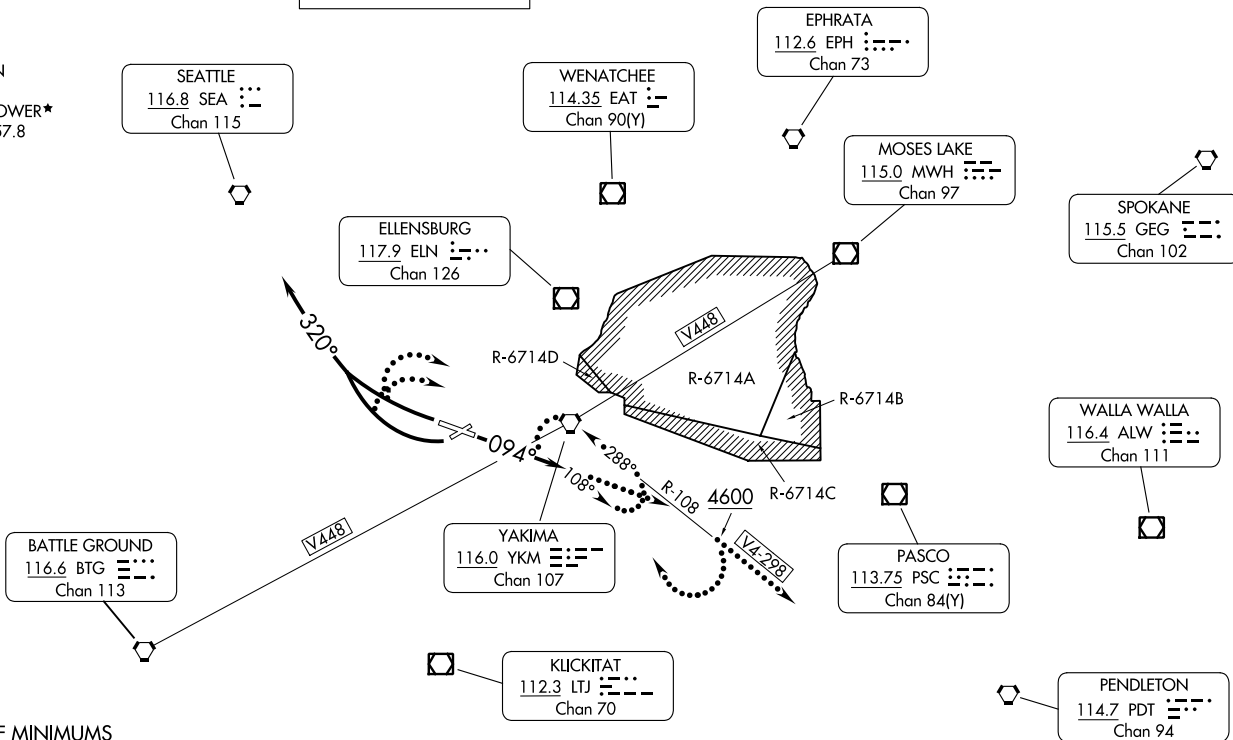


10 NOV 16
NACHES FOUR DEPARTURE

YAKIMA AIR TRML/MCALISTER FLD (YKIM)
 YAKIMA, WASHINGTON

SPOKANE DEP CON*
 123.8 263.15
 ATIS
 125.25
 CLNC DEL
 121.9
 GND CON
 121.9
YAKIMA TOWER*
 133.25 257.8

TOP ALTITUDE:
10000



TAKEOFF MINIMUMS

- Rwy 4: NA-obstacles.
- Rwy 9: Standard with minimum climb of 360' per NM to 4400.
- Rwy 22: Standard with minimum climb of 495' per NM to 6000.
- Rwy 27: Standard with minimum climb of 495' per NM to 6000.

NOTE: RADAR required.

(CONTINUED ON FOLLOWING PAGE)

NOTE: Chart not to scale.

23334
NACHES FOUR DEPARTURE

AL-465 (FAA)

YAKIMA AIR TRML/MCALISTER FLD (YKIM)
 YAKIMA, WASHINGTON



DEPARTURE ROUTE DESCRIPTION

TAKEOFF RUNWAY 9: Climb heading 094° for vector to assigned route/fix. Thence
TAKEOFF RUNWAYS 22, 27: Climbing right turn heading 320° for vector to assigned route/fix. Thence

. . . . maintain 10000 or assigned lower altitude. Expect clearance to filed altitude 5 minutes after departure.

LOST COMMUNICATIONS

If no transmissions are received for one minute after departure:

RUNWAY 9: Climb heading 094° and outbound YKM VORTAC R-108.

RUNWAYS 22, 27: Climbing right turn direct YKM VORTAC and outbound YKM R-108, eastbound aircraft V4-V298 continue on course, all other departures continue climb on YKM R-108, until 4600, then climbing right turn direct YKM VORTAC and hold to cross YKM VORTAC at or above MEA or MCA for route of flight.

NW-1, 26 DEC 2024 to 23 JAN 2025

NW-1, 26 DEC 2024 to 23 JAN 2025