

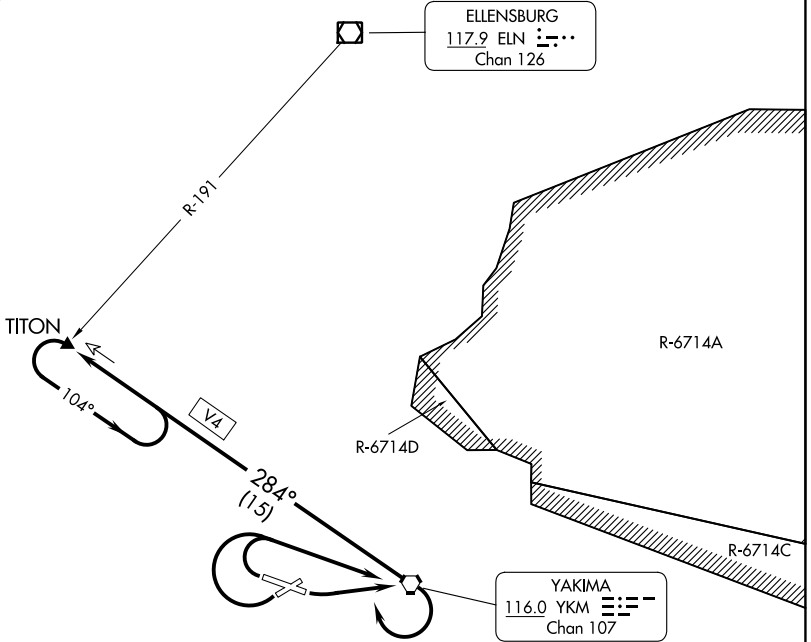
(YKM7.YKM) 23334

YAKIMA SEVEN DEPARTURE

AL-465 (FAA)

YAKIMA AIR TRML/MCALLISTER FLD (YKM)
YAKIMA, WASHINGTON

SPOKANE DEP CON ★
123.8 263.15
ATIS
125.25
CLNC DEL
121.9
GND CON
121.9
YAKIMA TOWER ★
133.25 257.8



NW-1, 26 DEC 2024 to 23 JAN 2025

NW-1, 26 DEC 2024 to 23 JAN 2025

TAKEOFF MINIMUMS

Rwy 4: NA - obstacles.

Rwy 9: Standard with minimum climb of 325' per NM to 5000.

Rwy 22: Standard with minimum climb of 325' per NM to 5000.

Rwy 27: Standard with minimum climb of 325' per NM to 5000.

NOTE: Chart not to scale.



DEPARTURE ROUTE DESCRIPTION

TAKEOFF RUNWAY 9: Climbing left turn direct YKM VORTAC, Thence. . . .

TAKEOFF RUNWAYS 22, 27: Climbing right turn direct YKM VORTAC. Thence. . . .

. . . .then climbing right turn to intercept YKM R-284 outbound to TITON INT and hold.
Continue climb in hold to MEA/MCA for route of flight. Then on (assigned route).

YAKIMA SEVEN DEPARTURE
(YKM7.YKM) 10NOV16

YAKIMA, WASHINGTON
YAKIMA AIR TRML/MCALLISTER FLD (YKM)