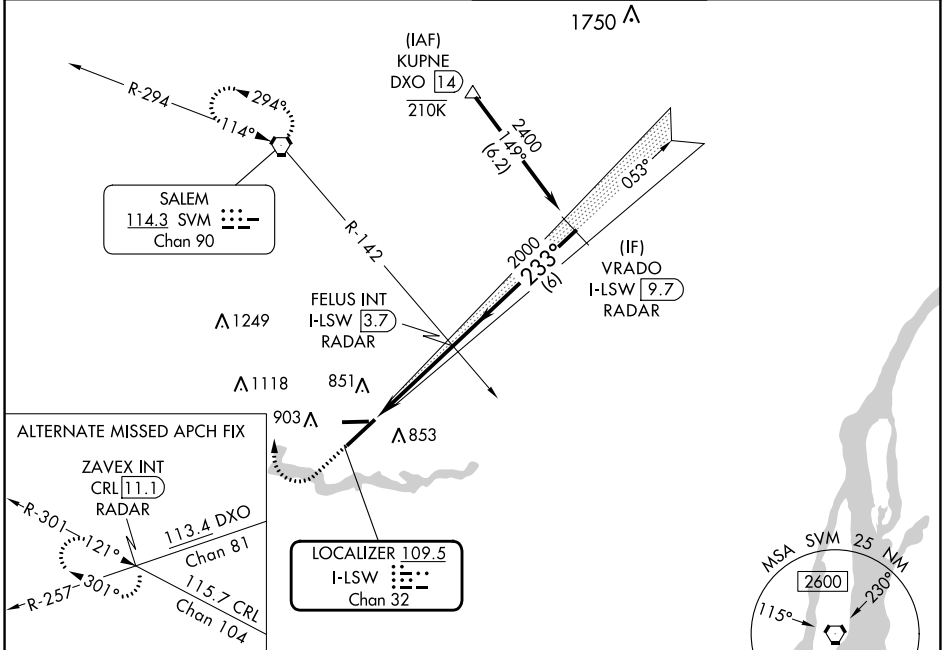


LOC/DME I-LSW 109.5 Chan 32	APP CRS 233°	Rwy Idg 7543 TDZE 710 Apt Elev 716
---	------------------------	---

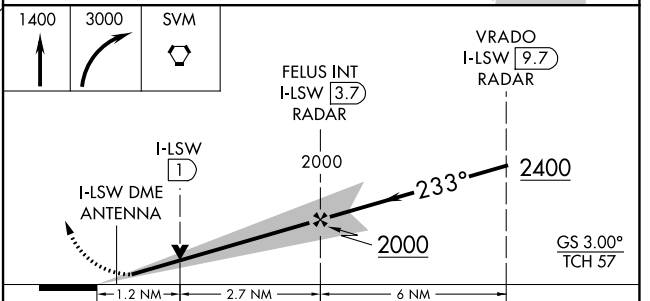
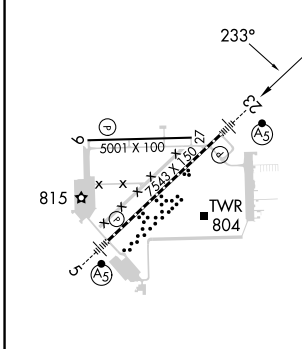
ILS or LOC RWY 23

WILLOW RUN (YIP)

RNP APCH-GPS from KUPNE. RADAR or GPS required.		MALSR	MISSED APPROACH: Climb to 1400 then climbing right turn to 3000 direct SVM VORTAC and hold.
ATIS 127.425	DETROIT APP CON 118.95 284.0	WILLOW RUN TOWER 125.275 256.9	GND CON 119.975



ELEV 716	D	TDZE 710
----------	---	----------



TDZ/CL Rwy 5 HIRL Rwy 5-23 MIRL Rwy 9-27		FAF to MAP 3.9 NM			
Knots	60	90	120	150	180
Min:Sec	3:54	2:36	1:57	1:34	1:18
CIRCLING	1220-1 504 (600-1)		1220-1½ 504 (600-½)		1400-2¼ 684 (700-2¼)

EC-1, 26 DEC 2024 to 23 JAN 2025

EC-1, 26 DEC 2024 to 23 JAN 2025