

(TRMML4.TRMML) 24137

TRMML FOUR DEPARTURE (RNAV)

AL-467 (FAA)

WILLOW RUN (YIP)

DETROIT, MICHIGAN

**TOP ALTITUDE:
ASSIGNED BY ATC**

RNAV 1 - DME/DME/IRU or GPS.

RADAR required.

DETROIT DEP CON

118.95 284.0

ATIS

127.425

GND CON

119.975

WILLOW RUN TOWER

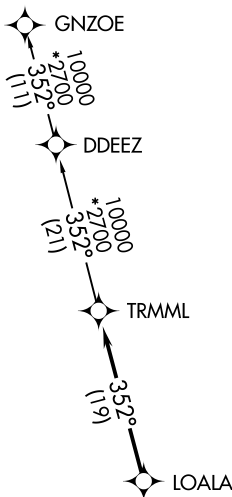
125.275 256.9

TAKEOFF MINIMUMS:

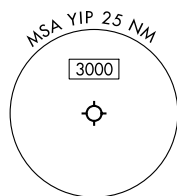
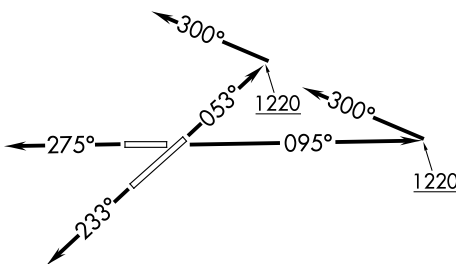
Rwy 23: Standard.

Rwys 5, 9: Standard with minimum climb of 500' per NM to 1220.

Rwy 27: Standard with minimum climb of 209' per NM to 1000.



NOTE: Turbojet departures at/above 10000, maintain 280K until advised by ATC.



NOTE: Chart not to scale.

DEPARTURE ROUTE DESCRIPTION

TAKEOFF RUNWAY 5: Climb on heading 053° to 1220, then on heading 300° or as assigned by ATC, for RADAR vectors to LOALA, thence....

TAKEOFF RUNWAY 9: Climb on heading 095° to 1220, then on heading 300° or as assigned by ATC, for RADAR vectors to LOALA, thence....

TAKEOFF RUNWAY 23: Climb on heading 233° or as assigned by ATC, for RADAR vectors to LOALA, thence....

TAKEOFF RUNWAY 27: Climb on heading 275° or as assigned by ATC, for RADAR vectors to LOALA, thence....

....on track 352° to TRMML, then on (transition). Maintain ATC assigned altitude, expect filed altitude 10 minutes after departure.

GNZOE TRANSITION (TRMML4.GNZOE):

TRMML FOUR DEPARTURE (RNAV)

(TRMML4.TRMML) 16MAY24

DETROIT, MICHIGAN

WILLOW RUN (YIP)

EC-1, 26 DEC 2024 to 23 JAN 2025

EC-1, 26 DEC 2024 to 23 JAN 2025