

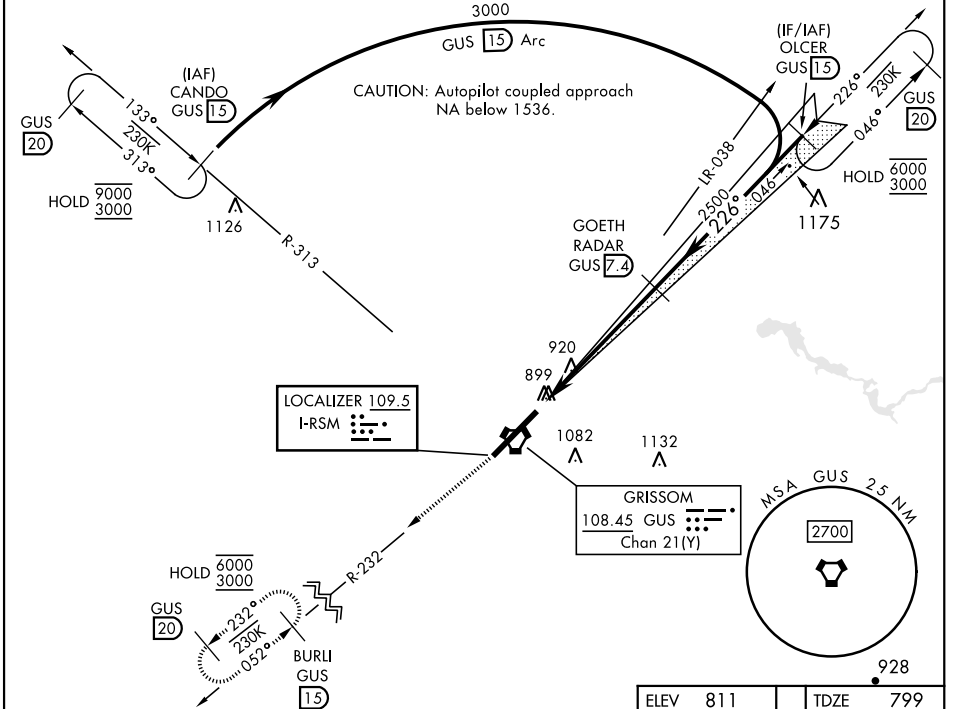
PERU, INDIANA

# ILS or LOC RWY 23

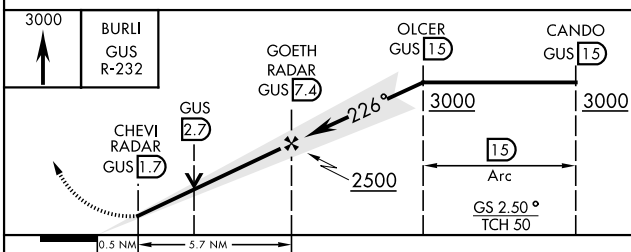
LOC I-RSM <b>109.5</b>	APCH CRS <b>226°</b>	Rwy Ldg TDZE <b>12,501</b> 799 Arprt Elev <b>811</b>	[USAF]	GRISSOM ARB (KGUS)
---------------------------	-------------------------	--	--------	--------------------

RADAR, TACAN required.	ALSF-1 	MISSED APPROACH: Climb to 3000 on the GUS VORTAC R-232 to BURLI and hold. Missed approach requires use of RNAV or ATC RADAR monitoring.
*When ALS inop, increase RVR to 40 and vis to 3/4 mile.		
** When ALS inop, increase CAT AB RVR to 55 and vis to 1 mile, CAT CDE vis to 1 1/2 miles.		

ATIS <b>108.45 270.8</b>	APP CON <b>121.05 351.8</b> (E) <b>123.85 291.675</b> (W)	TOWER★ <b>133.7 290.45</b>	GND CON <b>128.425 275.8</b>	CLNC DEL <b>128.425 275.8</b>
-----------------------------	---	-------------------------------	---------------------------------	----------------------------------



EMERG SAFE ALT 100 NM 3500



ELEV 811	TDZE 799
913	226°
911	911
TWR 938	1000
12.501 / 200	
913	911
911	911
HIRL Rwy 5-23	
FAF to MAP 5.7 NM	
Knots	60 90 120 150 180
Min:Sec	5:42 3:48 2:51 2:17 1:54

CATEGORY	A	B	C	D	E
S-ILS 23*	999/24		200	(200-1/2)	
S-LOC 23**	1260/24	461 (500-1/2)	1260/50	461	(500-1)
CIRCLING	1340-1	529 (600-1)	1400-1 1/2 589 (600-1 1/2)	1400-2 589 (600-2)	1440-2 1/4 629 (700-2 1/4)

PERU, INDIANA

40°39'N-86°09'W

GRISSOM ARB (KGUS)

Amdt 7 14JUL22

# ILS or LOC RWY 23

EC-2, 26 DEC 2024 to 23 JAN 2025

EC-2, 26 DEC 2024 to 23 JAN 2025