

PERU, INDIANA

ILS or LOC RWY 5

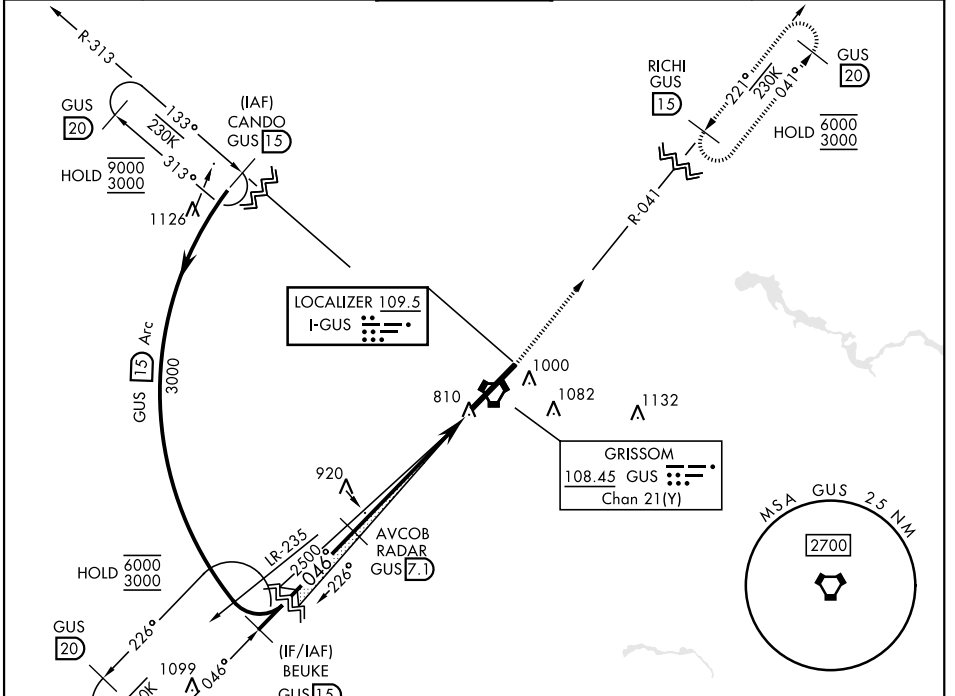
LOC I-GUS 109.5	APCH CRS 046°	Rwy Ildg 12,501
		TDZE 811
		Arprt Elev 811

[USAF]

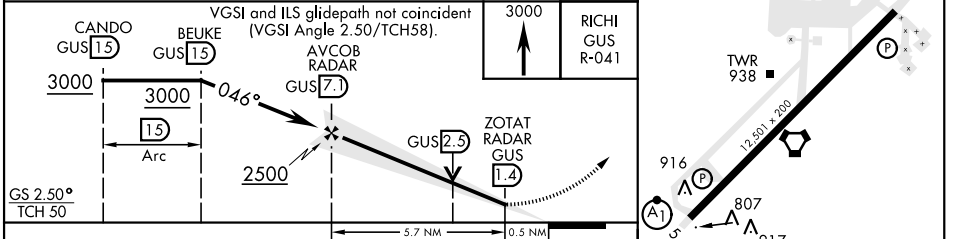
GRISSOM ARB (KGUS)

RADAR, TACAN required	ALSF-1	MISSED APPROACH: Climb to 3000 on the GUS VORTAC R-041 to RICHI and hold.
* When ALS inop, increase RVR to 40 and vis to 3/4 mile.		Misssed approach requires use of RNAV or ATC RADAR monitoring.
** When ALS inop, increase CAT AB RVR to 55 and vis to 1 mile; CAT CDE vis to 1 1/2 miles.		

ATIS 108.45 270.8	APP CON 121.05 351.8 (E) 123.85 291.675 (W)	TOWER★ 133.7 290.45	GND CON 128.425 275.8	CLNC DEL 128.425 275.8
-----------------------------	---	-------------------------------	---------------------------------	----------------------------------



ELEV 811	TDZE 811
----------	----------



EMERG SAFE ALT 100 NM 3500	VGSI and ILS glidepath not coincident (VGSI Angle 2.50/TCH58).					RICHI GUS R-041					
CATEGORY	A	B	C	D	E	HIRL Rwy 5-23					
S-ILS 5*	1011/24					200 (200-1/2)					
S-LOC 5**	1280/24	469 (500-1/2)	1280/50		469 (500-1)	FAF to MAP 5.7 NM					
CIRCLING	1340-1	529 (600-1)	1400-1 1/2	1400-2	1440-2 1/4	Knots	60	90	120	150	180
			589 (600-1/2)	589 (600-2)	629 (700-2 1/4)	Min:Sec	5:42	3:48	2:51	2:17	1:54

PERU, INDIANA

40°39'N-86°09'W

GRISSOM ARB (KGUS)

Amtd 9 11AUG22

ILS or LOC RWY 5

EC-2, 26 DEC 2024 to 23 JAN 2025

EC-2, 26 DEC 2024 to 23 JAN 2025