

PERU, INDIANA

RNAV (GPS) RWY 23

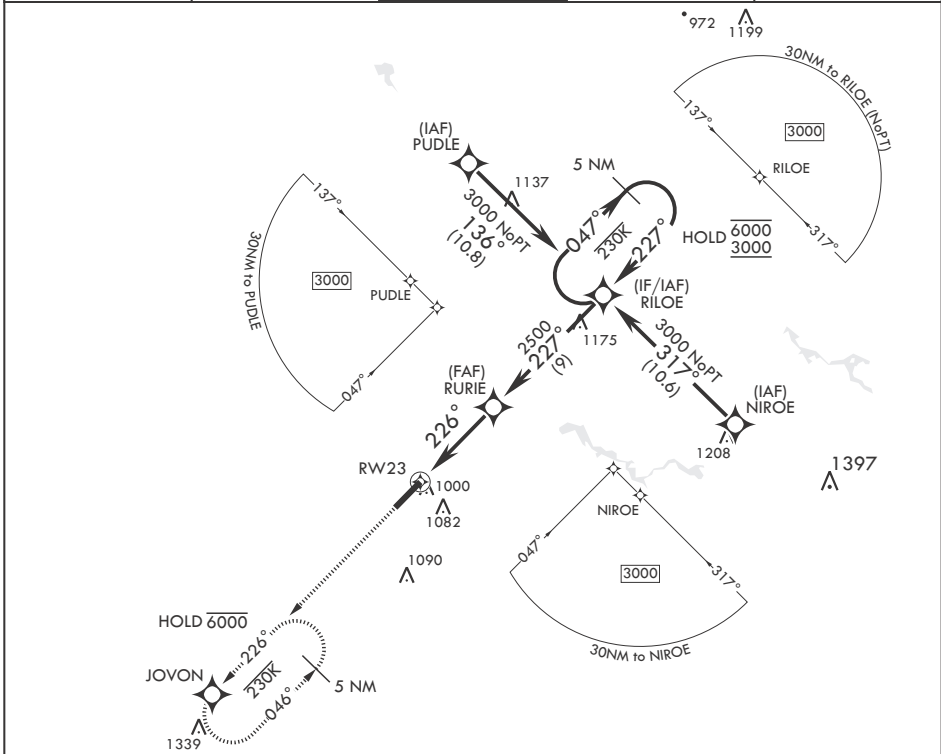
APCH CRS	Rwy Idg	12,501
226°	TDZE	799
	Arprt Elev	811

-(USAF)

GRISSOM ARB (KGUS)

RNP APCH	ALSF-1	MISSED APPROACH: Climb to 3000 direct JOVON and hold.
* When ALS inop, increase CAT AB RVR to 55 and vis to 1 mile, CAT CDE vis to 1 3/8 miles.		

ATIS 108.45 270.8	APP CON/DEP CON 121.05 351.8 E 123.85 291.675 W	TOWER* 133.7 290.45	GND CON 128.425 275.8	CLNC DEL 128.425 275.8
----------------------	---	------------------------	--------------------------	---------------------------



EMERG SAFE ALT 100 NM 3500

3000	JOVON	5 NM Holding Pattern			ELEV 811	TDZE 799
		RILOE	047°	6000		
		RURIE	227°	3000		
			226°	2500		
			1.5 NM to RW23			
			6 NM			
					≤ 2.59° TCH 51	
CATEGORY	A	B	C	D	E	
LNAV MDA*	1260/24	461 (500-½)	1260/50	461	(500-1)	
	1300-1	489 (500-1)	1400-1½	1400-2	1440-2¼	
			589 (600-1½)	589 (600-2)	629 (700-2¼)	

PERU, INDIANA

40°39'N - 86°09'W

GRISSOM ARB (KGUS)

Amdt 7 26DEC24

RNAV (GPS) RWY 23

EC-2, 26 DEC 2024 to 23 JAN 2025

EC-2, 26 DEC 2024 to 23 JAN 2025