

PERU, INDIANA

TACAN or VOR RWY 5

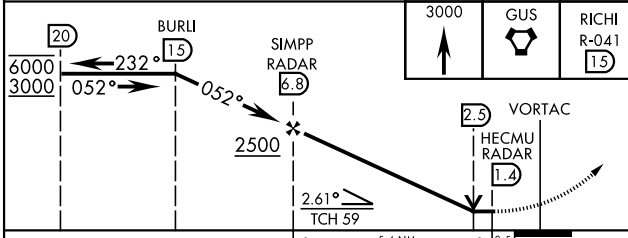
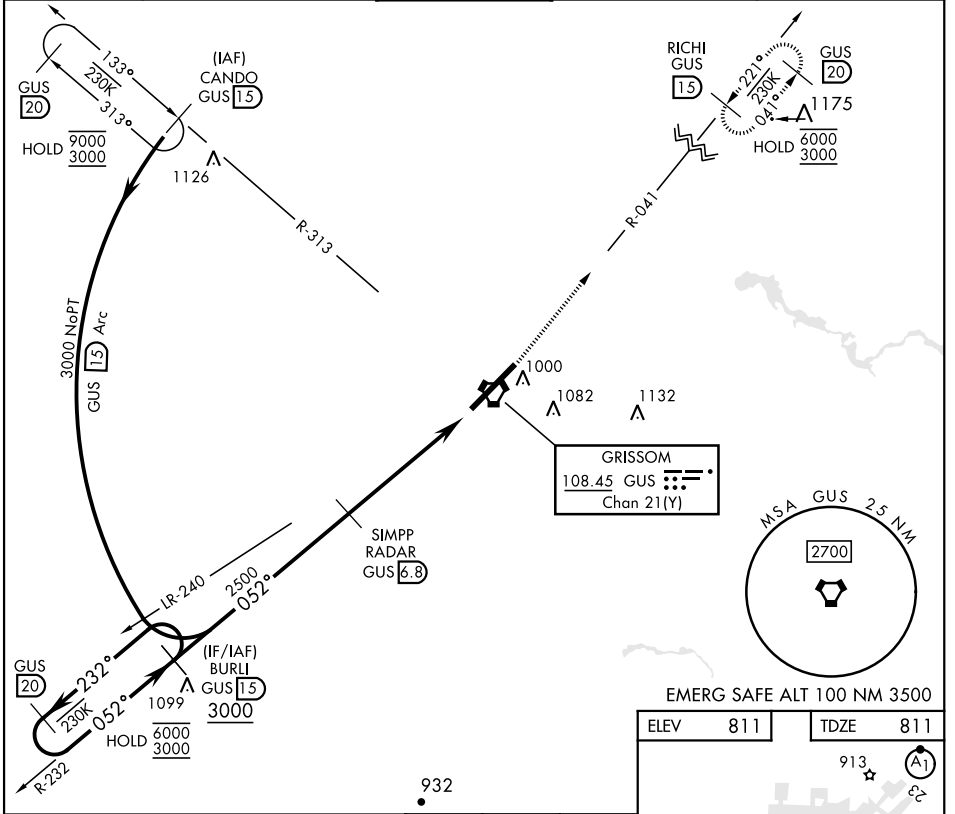
VORTAC GUS 108.45 Chan 21 (Y)	APCH CRS 052°	Rwy Idg 12,501 TDZE 811 Arprt Elev 811
---	-------------------------	---

[USAF]

GRISSOM ARB (KGUS)

RADAR, DME required	ALSF-1 A1	MISSED APPROACH: Climb to 3000 on the GUS VORTAC, R-041 to RICHI and hold. Missed approach requires use of RNAV or ATC RADAR monitoring.
---------------------	---------------------	--

ATIS 108.45 270.8	APP CON 121.05 351.8 123.85 291.675 (E) (W)	TOWER ★ 133.7 290.45	GND CON 128.425 275.8	CLNC DEL 128.425 275.8
-----------------------------	---	--------------------------------	---------------------------------	----------------------------------



ELEV 811	TDZE 811
913	A1
TWR 938	P
919	A
920	A
918	A
HIRL Rwy 5-23	
FAF to MAP 5.4 NM	
Knots	60 90 120 150 180
Min:Sec	5:24 3:36 2:42 2:10 1:48

CATEGORY	A	B	C	D	E
S-5 *	1280/24 469 (500-½)		1280/50 469	(500-1)	
C CIRCLING	1340-1 529 (600-1)		1400-1½ 589 (600-1½)	1400-2 589 (600-2)	1440-2¼ 629 (700-2¼)

PERU, INDIANA 40°39'N-86°09'W GRISSOM ARB (KGUS)

Amtd 9 14JUL22

TACAN or VOR RWY 5

EC-2, 26 DEC 2024 to 23 JAN 2025

EC-2, 26 DEC 2024 to 23 JAN 2025