

CHERRY POINT, NORTH CAROLINA

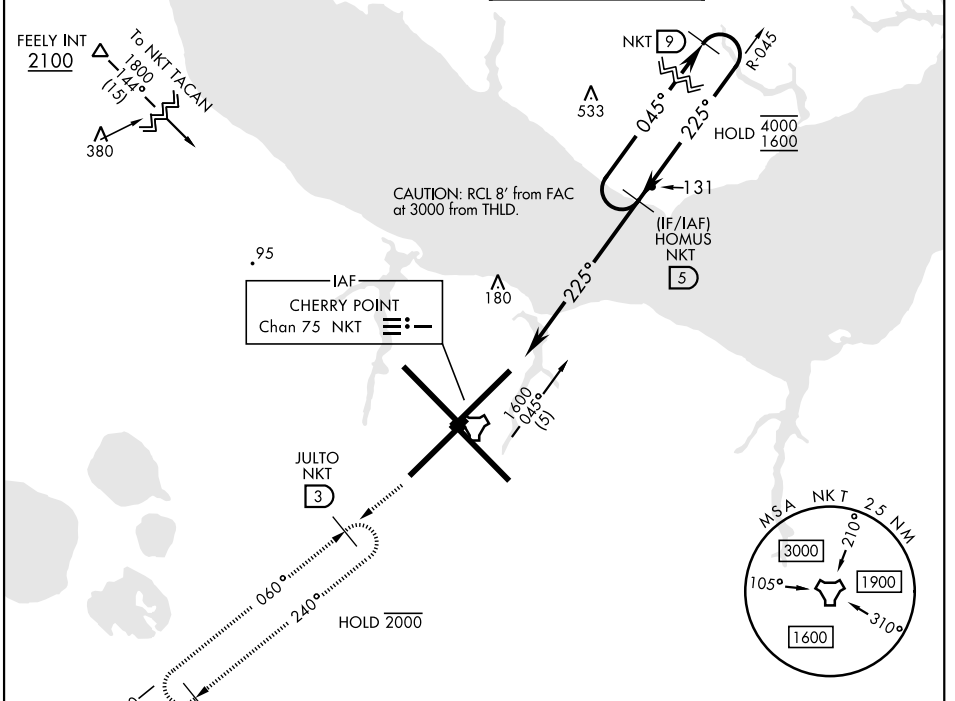
COPTER TACAN RWY 23R

| | | |
|-----------------------------|-------------------------|--|
| TACAN NKT Chan 75 | APCH CRS 225° | Rwy ldg TDZE Arprt Elev 7552 23 29 |
|-----------------------------|-------------------------|--|

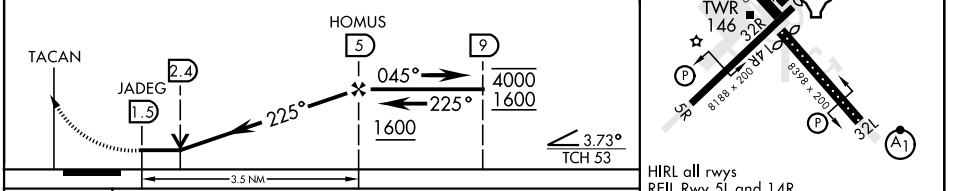
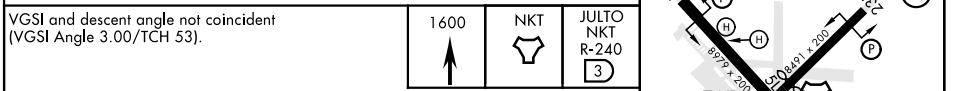
[USN] CHERRY POINT MCAS (CUNNINGHAM FLD) (KNKT)

| | | |
|--|-----------|--|
| ▼ * When ALS inop, increase vis to 1 mile. Max Airspeed 90 KIAS | MALSR | MISSED APPROACH: Climb to 1600 direct NKT TACAN and fly NKT R-240 to JULTO and hold. |
|--|-----------|--|

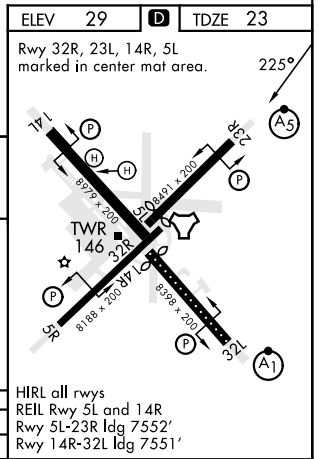
| | | | | | | |
|--|--|---|-----------------------------|---|---|-------------|
| ATIS 127.475 244.875 | (E) 119.75 (E) 132.575 (W) 119.35 | APP CON 360.775 (abv 2600') 299.6 (at/blw 2600') 377.175 (N) 124.1 268.7 | TOWER 121.3 340.2 | GND CON 128.625 239.025 | CLNC DEL 125.95 316.125 | ASR/ PAR |
|--|--|---|-----------------------------|---|---|-------------|



| | | |
|--|---|---------|
| ELEV 29 | D | TDZE 23 |
| Rwy 32R, 23L, 14R, 5L marked in center mat area. | | |



| | | | |
|----------|---------|-----|-----------|
| CATEGORY | COPTER | | |
| S-23R * | 440-1/2 | 417 | (500-1/2) |



HIRL all rwys
REIL Rwy 5L and 14R
Rwy 5L-23R ldg 7552'
Rwy 14R-32L ldg 7551'

CHERRY POINT, NORTH CAROLINA 34°54'N-76°53'W CHERRY POINT MCAS (CUNNINGHAM FLD) (KNKT)

Amdt 8 02NOV23

COPTER TACAN RWY 23R

SE-2, 26 DEC 2024 to 23 JAN 2025

SE-2, 26 DEC 2024 to 23 JAN 2025