

ILS or LOC/DME RWY 23R

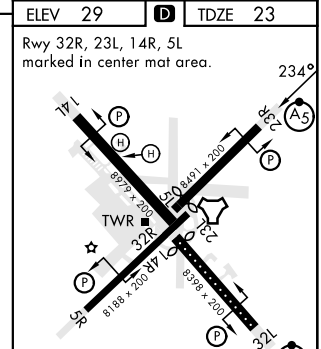
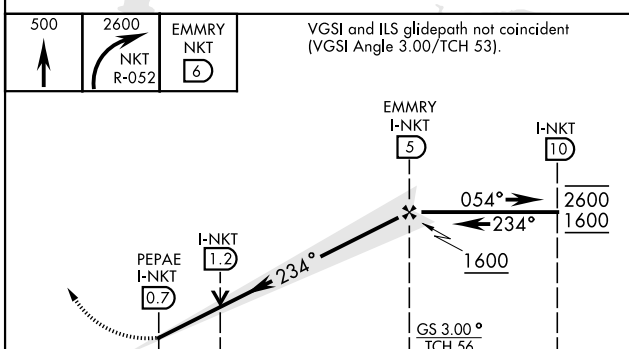
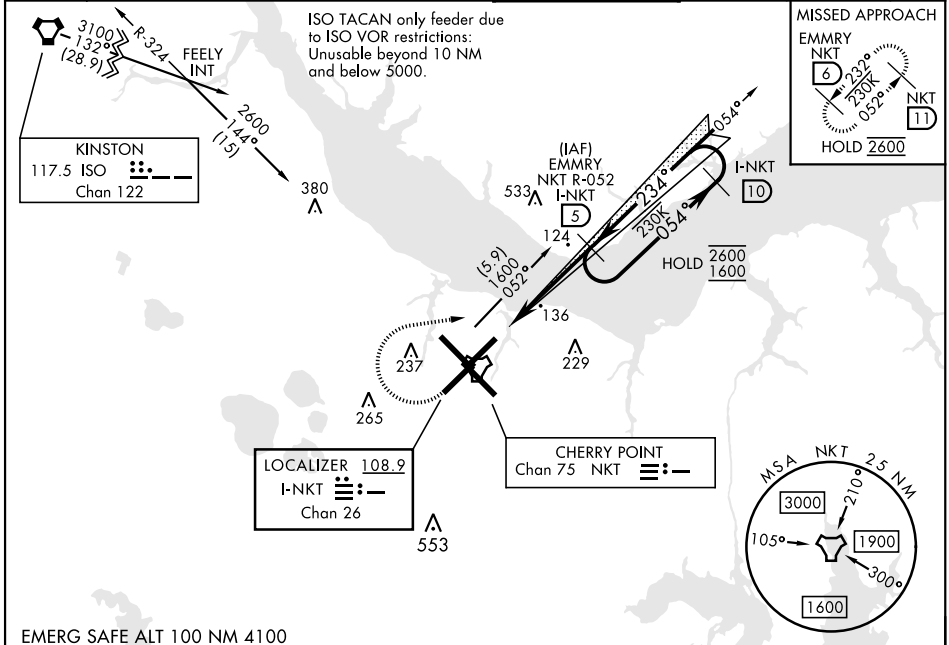
LOC/DME I-NKT 108.9 Chan 26	APCH CRS 234°	Rwy Idg TDZE 23 Arprt Elev 29	7552
---	-------------------------	---	-------------

[USN]

CHERRY POINT MCAS (CUNNINGHAM FLD) (KNKT)

TACAN required * When ALS inop, increase vis to ¾ mile. ** When ALS inop, increase vis to 1 mile.	MALSR 	MISSED APPROACH: Climb to 500, then climbing right turn to 2600 via NKT TACAN R-052 to EMMRY and hold. Continue climb in hold to 2600.
---	-----------	--

ATIS 127.475 244.875	(E) 119.75 (E) 132.575 (W) 119.35	APP CON 360.775 (abv 2600') 299.6 (at/blw 2600') 377.175 (N) 124.1 268.7	TOWER 121.3 340.2	GND CON 128.625 239.025	CLNC DEL 125.95 316.125	ASR/PAR
--	--	---	-----------------------------	---	---	---------



CATEGORY	A	B	C	D
S-ILS 23R*	223-½		200	(200-½)
S-LOC 23R**	400-½	377 (400-½)	400-⅝	377 (400-⅝)
CIRCLING	580-1	551 (600-1)	580-1½	551 (600-1½)
			580-2	551 (600-2)

FAF to MAP 4.3 NM

Knots	60	90	120	150	180
Min:Sec	4:18	2:52	2:09	1:43	1:26

ILS or LOC/DME RWY 23R

SE-2, 26 DEC 2024 to 23 JAN 2025

SE-2, 26 DEC 2024 to 23 JAN 2025