

CHERRY POINT, NORTH CAROLINA

RNAV (GPS) RWY 14L

WAAS Chan 41117 W14A	APCH CRS 144°	Rwy ldg TDZE Arprt Elev 8979 26 29
--	-------------------------	--

[USN]

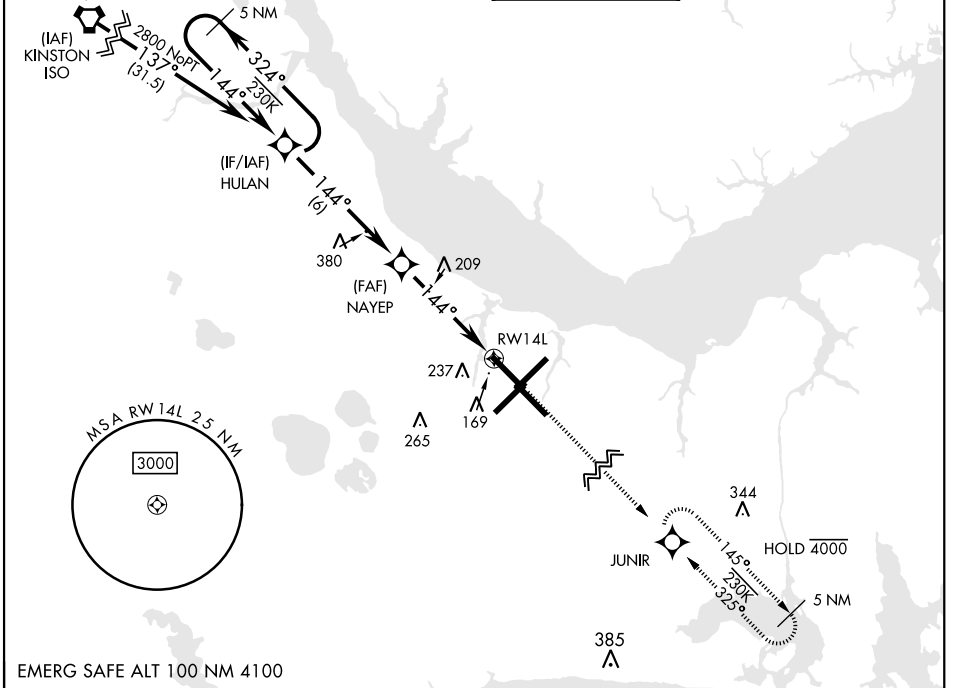
CHERRY POINT MCAS (CUNNINGHAM FLD) (KNKT)

RNP APCH

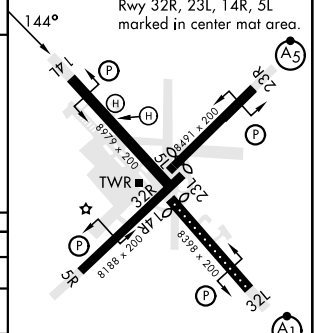
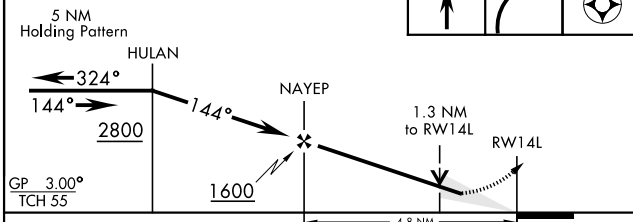
▼ For uncompensated Baro-VNAV systems, LNAV/VNAV NA below -15°C (5°F) or above 54°C (129°F).

MISSED APPROACH: Climb to 600 then climbing right turn to 2800 direct JUNIR and hold.

ATIS 127.475 244.875	APP CON 119.75 (E) 360.775 (abv 2600') 132.575 (E) 299.6 (at/blw 2600') 119.35 (W) 377.175 (N) 124.1 268.7	TOWER 121.3 340.2	GND CON 128.625 239.025	CLNC DEL 125.95 316.125	ASR/ PAR
--	---	------------------------------------	---	---	-------------



VGSI and RNAV glidepath not coincident (VGSI Angle 3.00°/TCH 71').	600	2800	JUNIR	ELEV 29	TDZE 26
--	-----	------	-------	---------	---------



CATEGORY	A	B	C	D
LPV DA		226-3/4	200	(200-3/4)
LNAV/VNAV DA	301-7/8 275 (300-7/8)	312-7/8 286 (300-7/8)	320-7/8 294 (300-7/8)	331-7/8 305 (400-7/8)
LNAV MDA	500-1	474 (500-1)	500-1 3/8 551 (600-1 1/2)	474 (500-1 3/8) 580-2 551 (600-2)
CIRCLING	580-1	551 (600-1)		

HIRL all rwys
REIL Rwy 5L and 14R
Rwy 5L-23R ldg 7552'
Rwy 14R-32L ldg 7551'

CHERRY POINT, NORTH CAROLINA

34° 54'N-76° 53'W

CHERRY POINT MCAS (CUNNINGHAM FLD) (KNKT)

Amdt 5 02NOV23

RNAV (GPS) RWY 14L

SE-2, 26 DEC 2024 to 23 JAN 2025

SE-2, 26 DEC 2024 to 23 JAN 2025