

CHERRY POINT, NORTH CAROLINA

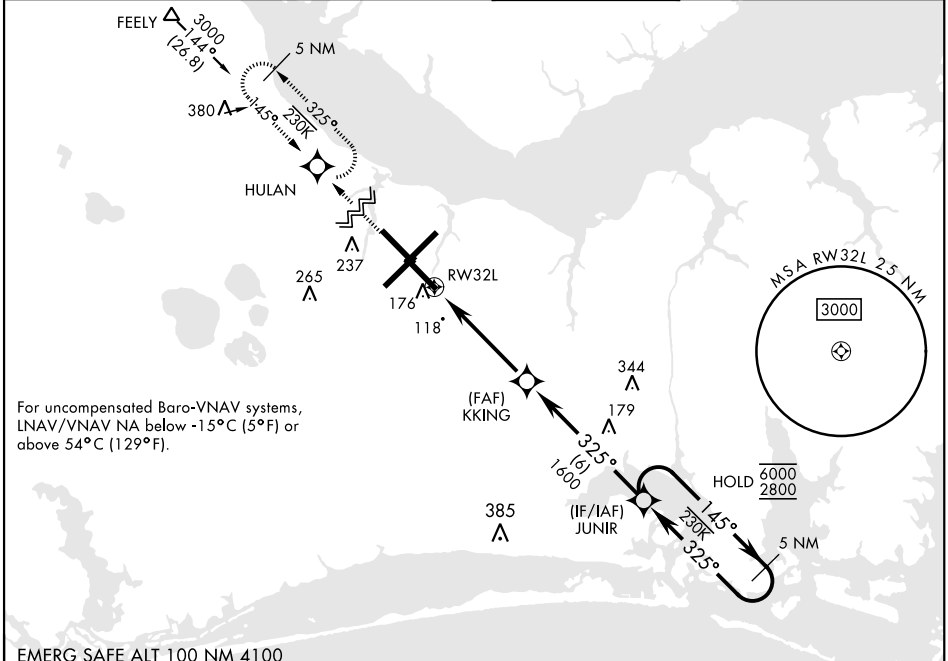
RNAV (GPS) RWY 32L

WAAS Chan 54304 W32A	APCH CRS 325°	Rwy ldg TDZE Arprt Elev 7551 26 29
--	-------------------------	--

[USN] CHERRY POINT MCAS (CUNNINGHAM FLD) (KNKT)

RNP APCH ▼ *When ALS inop, increase vis to ¾ mile. **When ALS inop, increase vis to 1 mile. ***When ALS inop, increase CAT AB vis to 1 mile, CAT CD vis to 1¼ miles.	ALSIF-1 	MISSED APPROACH: Climb to 600 then climbing right turn to 2800 direct HULAN and hold.
--	-------------	---

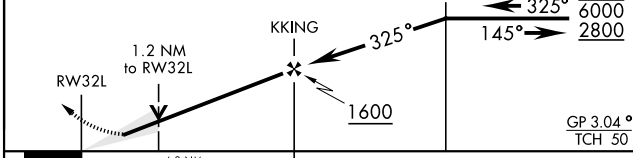
ATIS 127.475 244.875	(E) 119.75 360.775 (abv 2600') (E) 132.575 299.6 (at/blw 2600') (W) 119.35 377.175 (N) 124.1 268.7	APP CON	TOWER 121.3 340.2	GND CON 128.625 239.025	CLNC DEL 125.95 316.125	ASR/ PAR
--	--	---------	------------------------------------	---	---	-------------



For uncompensated Baro-VNAV systems, LNAV/VNAV NA below -15°C (5°F) or above 54°C (129°F).

EMERG SAFE ALT 100 NM 4100

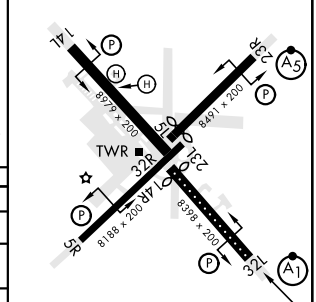
600	2800	HULAN	VGSI and RNAV glidepath not coincident. (VGSI Angle 3.00/TCH 78)	5 NM Holding Pattern
-----	------	-------	---	-------------------------



CATEGORY	A	B	C	D
LPV DA*		225-½	200	(200-½)
LNAV/ VNAV DA**		400-⅝	375	(400-⅝)
LNAV MDA***	460-½	435 (500-½)	460-¾	435 (500-¾)
CIRCLING	580-1	551 (600-1)	580-1½	580-2
			551 (600-1½)	551 (600-2)

ELEV 29	TDZE 26
---------	---------

Rwy 32R, 23L, 14R, 5L marked in center mat area.



HIRL all rwys
REIL Rwy 5L and 14R
Rwy 5L-23R ldg 7552'
Rwy 14R-32L ldg 7551'

CHERRY POINT, NORTH CAROLINA 34° 54'N-76° 53'W CHERRY POINT MCAS (CUNNINGHAM FLD) (KNKT)

Amdt 8 02NOV23

RNAV (GPS) RWY 32L

SE-2, 26 DEC 2024 to 23 JAN 2025

SE-2, 26 DEC 2024 to 23 JAN 2025