

CERRY POINT, NORTH CAROLINA

# TACAN Z RWY 32L

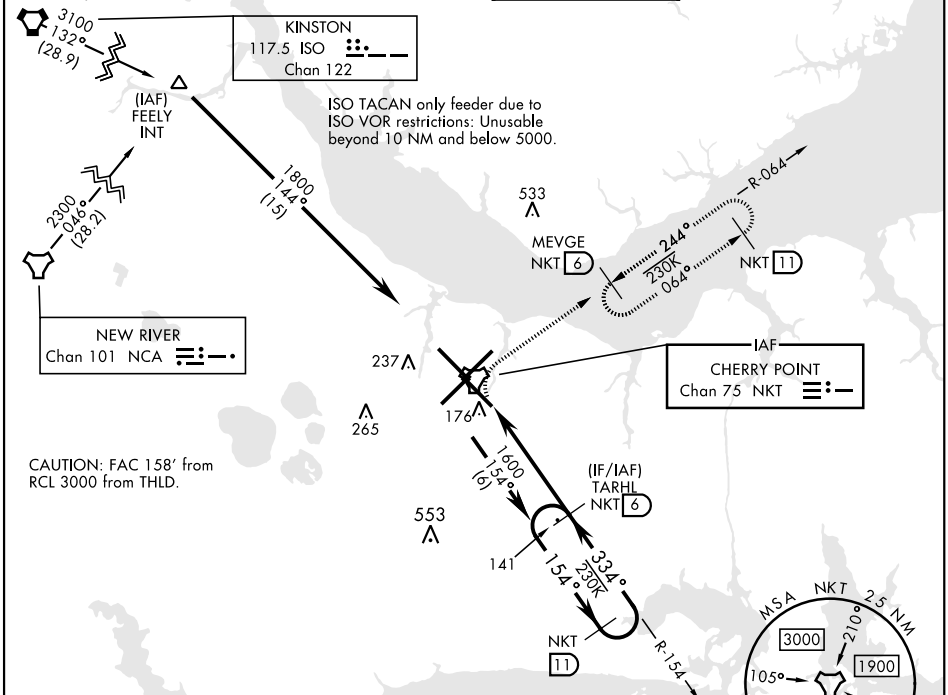
TACAN NKT Chan 75	APCH CRS 334°	Rwy Idg 7551	TDZE 26	Arpt Elev 29
----------------------	------------------	-----------------	------------	-----------------

[USN]

CERRY POINT MCAS (CUNNINGHAM FLD) (KNKT)

▼ \* When ALS inop, increase vis CAT AB to 1 mile, CAT CD to 1 3/8 miles.
 ALSF-1  
(A1)
MISSED APPROACH: Climbing right turn to 1600 and intercept NKT R-064 to MEVGE and hold.

ATIS 127.475 244.875	(E) 119.75 (E) 132.575 (W) 119.35	APP CON 360.775 (abv 2600') 299.6 (at/blw 2600') 377.175 (N) 124.1 268.7	TOWER 121.3 340.2	GND CON 128.625 239.025	CLNC DEL 125.95 316.125	ASR/ PAR
----------------------------	---	---	----------------------	-------------------------------	-------------------------------	-------------



SE-2, 26 DEC 2024 to 23 JAN 2025

SE-2, 26 DEC 2024 to 23 JAN 2025

EMERG SAFE ALT 100 NM 4100

ELEV 29	TDZE 26
---------	---------

Rwy 32R, 23L, 14R, 5L marked in center mat area.

HIRL all rwys  
 REIL Rwy 5L and 14R  
 Rwy 5L-23R Idg 7552'  
 Rwy 14R-32L Idg 7551'

VGSIs and descent angles not coincident (VGSi Angle 3.00/TCH 78).

CATEGORY	A	B	C	D
S-32L *	460-1/2	435 (500-1/2)	460-3/4	435 (500-3/4)
<b>C</b> CIRCLING	580-1	551 (600-1)	580-1 1/2	580-2
			551 (600-1 1/2)	551 (600-2)

CERRY POINT, NORTH CAROLINA

34° 54' N-76° 53' W

CERRY POINT MCAS (CUNNINGHAM FLD) (KNKT)

Amdt 6 02NOV23

# TACAN Z RWY 32L