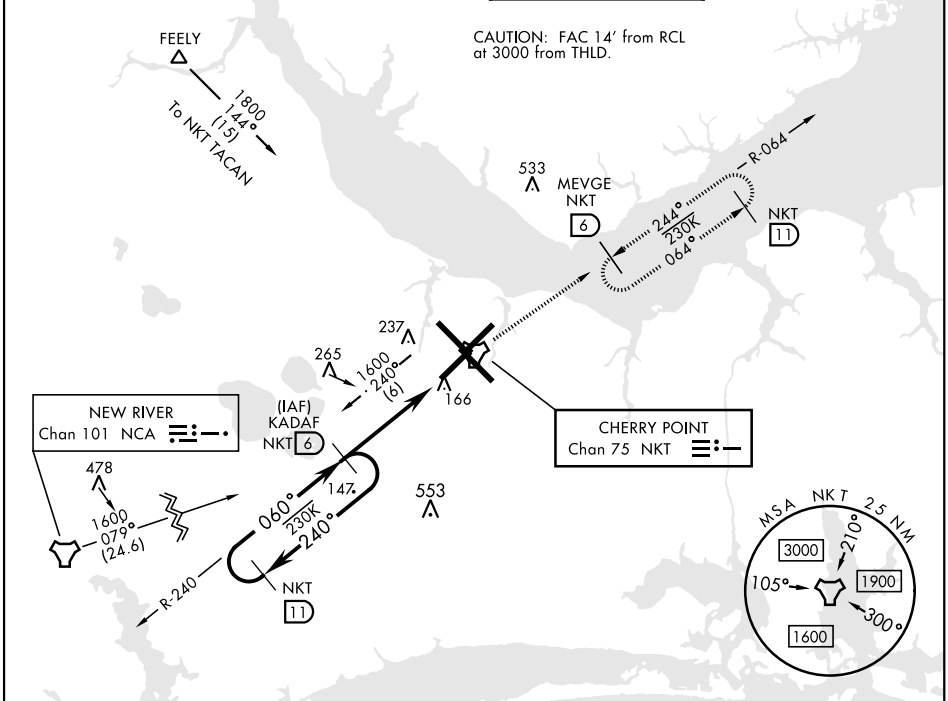


# TACAN Z RWY 5R

TACAN NKT Chan 75	APCH CRS 060°	Rwy ldg TDZE Arprt Elev	8188 27 29	[USN]	CHERRY POINT MCAS (CUNNINGHAM FLD)	(KNKT)
----------------------	------------------	-------------------------------	------------------	-------	------------------------------------	--------

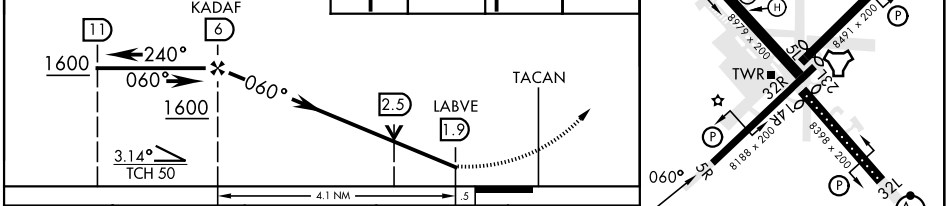
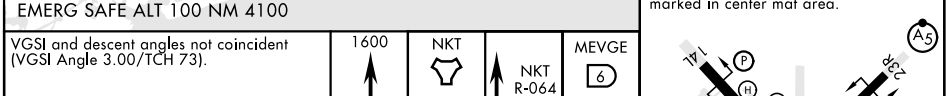
**MISSED APPROACH:** Climb to 1600 direct NKT TACAN and fly NKT R-064 to MEVGE and hold.

ATIS 127.475 244.875	(E) 119.75 (E) 132.575 (W) 119.35	APP CON 360.775 (aby 2600') 299.6 (at/blw 2600') 377.175 (N) 124.1 268.7	TOWER 121.3 340.2	GND CON 128.625 239.025	CLNC DEL 125.95 316.125	ASR/ PAR
----------------------------	---	---	----------------------	-------------------------------	-------------------------------	-------------



ELEV 29	TDZE 27
---------	---------

Rwy 32R, 23L, 14R, 5L marked in center mat area.



CATEGORY	A	B	C	D
S-5R	420-1	394 (400-1)	420-1½	394 (400-1½)
<b>CIRCLING</b>	580-1	551 (600-1)	580-1½	551 (600-2)

HIRL all rwys  
REIL Rwy 5L and 14R  
Rwy 5L-23R ldg 7552'  
Rwy 14R-32L ldg 7551'

# TACAN Z RWY 5R

SE-2, 26 DEC 2024 to 23 JAN 2025

SE-2, 26 DEC 2024 to 23 JAN 2025