

RNAV (GPS) RWY 30

WAAS CH 70955 W30A	APCH CRS 304°	Rwy Idg TDZE Arprt Elev 6825 -42 -42
--	-------------------------	--

[USN]

EL CENTRO NAF (VRACIU FLD) (KNJK)

RNP APCH

▼ *NA at night.
Visibility reduction by helicopters NA.

MISSED APPROACH: Climb to 500, then climbing left turn to 2300 direct BEENY and hold.

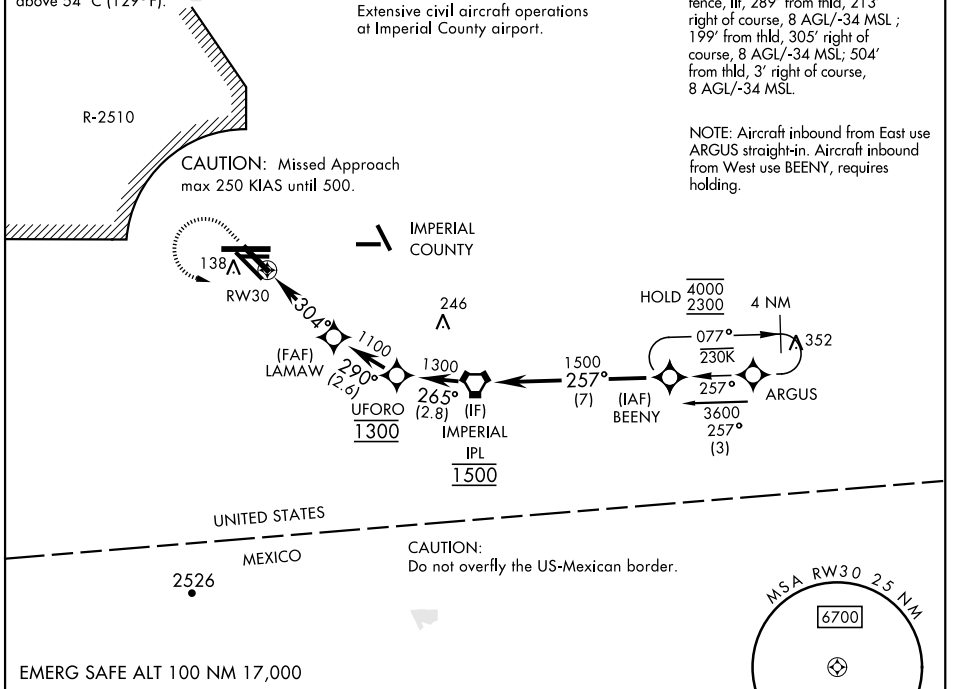
ATIS ★ 269.275	APP CON/DEP CON 128.55 292.2	TOWER ★ 119.1 360.2	GND CON 121.9 254.35	CLNC DEL 340.2
--------------------------	--	-------------------------------	--------------------------------	--------------------------

For uncompensated Baro-VNAV system
LNAV/VNAV NA below -14°C (7°F) or
above 54°C (129°F).

CAUTION:
Extensive civil aircraft operations
at Imperial County airport.

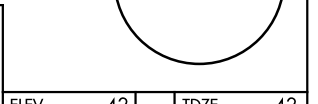
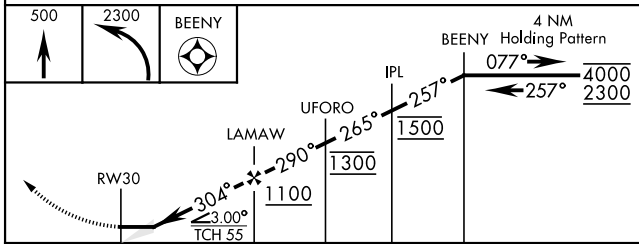
20:1 visual area penetrated by
fence, lit, 289' from thld, 213'
right of course, 8 AGL/-34 MSL;
199' from thld, 305' right of
course, 8 AGL/-34 MSL; 504'
from thld, 3' right of course,
8 AGL/-34 MSL.

NOTE: Aircraft inbound from East use
ARGUS straight-in. Aircraft inbound
from West use BEENY, requires
holding.

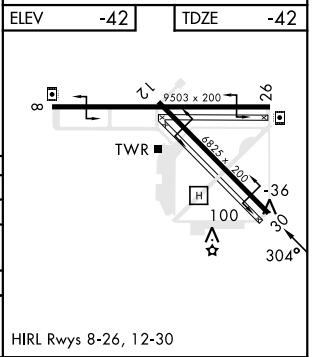


SW-3, 26 DEC 2024 to 23 JAN 2025

SW-3, 26 DEC 2024 to 23 JAN 2025



CATEGORY	A	B	C	D
	208-1	250	(300-1)	
	231-1	242-1	250-1	261-1
	273 (300-1)	284 (300-1)	292 (300-1)	303 (400-1)
LNAV MDA*	360-1	402 (500-1)	360-1½	402 (500-1½)
CIRCLING	480-1	522 (600-1)	480-1½	520-2
			522 (600-1½)	562 (600-2)



RNAV (GPS) RWY 30