

EL CENTRO, CALIFORNIA

RNAV (GPS) RWY 8

WAAS CH 89932 W08A	APCH CRS 079°	Rwy ldg TDZE -46 Arpt Elev -42	9503
---------------------------------	-------------------------	--	-------------

- (USN)

EL CENTRO NAF (VRACIU FLD) (KNJK)

RNP APCH

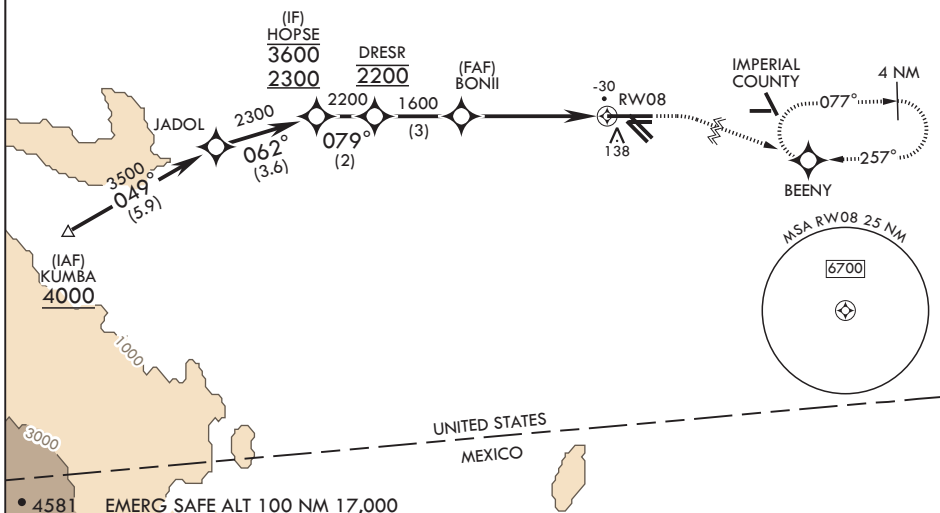
▼ Circling visibility reduction by helicopters NA.
When tower closed, increase visibility to 1 mile.

MISSED APPROACH: Climb to 800, then climbing right turn to 2400 direct BEENY and hold.

ATIS* 269.275	APP CON/DEP CON 128.55 292.2	TOWER* 119.1 360.2	GND CON 121.9 254.35	CLNC DEL 340.2
-------------------------	--	------------------------------	--------------------------------	--------------------------

Circling to Rwy 30 NA at night.

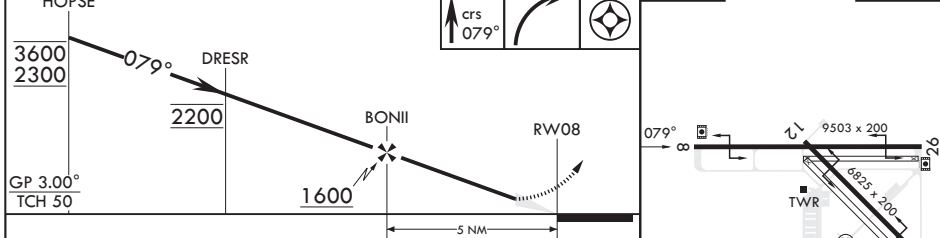
For uncompensated Baro-VNAV systems, LNAV/VNAV NA below -14°C (7°F) or above 54°C (129°F).



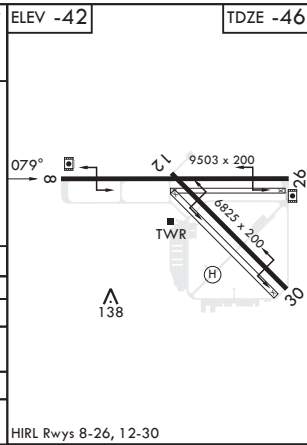
SW-3, 26 DEC 2024 to 23 JAN 2025

SW-3, 26 DEC 2024 to 23 JAN 2025

• 4581 EMERG SAFE ALT 100 NM 17,000



CATEGORY	A	B	C	D
LPV DA	204-¾		250	(300-¾)
LNAV/VNAV DA	204-¾ 250 (300-¾)	235-⅞ 281 (300-⅞)	249-⅞ 295 (300-⅞)	268-⅞ 314 (400-⅞)
LNAV MDA	460-1	506 (600-1)	460-1½	506 (600-1½)
C CIRCLING	480-1	522 (600-1)	480-1½ 522 (600-1½)	520-2 562 (600-2)



EL CENTRO, CALIFORNIA 32°50'N - 115°40'W EL CENTRO NAF (VRACIU FLD) (KNJK)

Orig 13JUL23

RNAV (GPS) RWY 8