

TACAN RWY 26

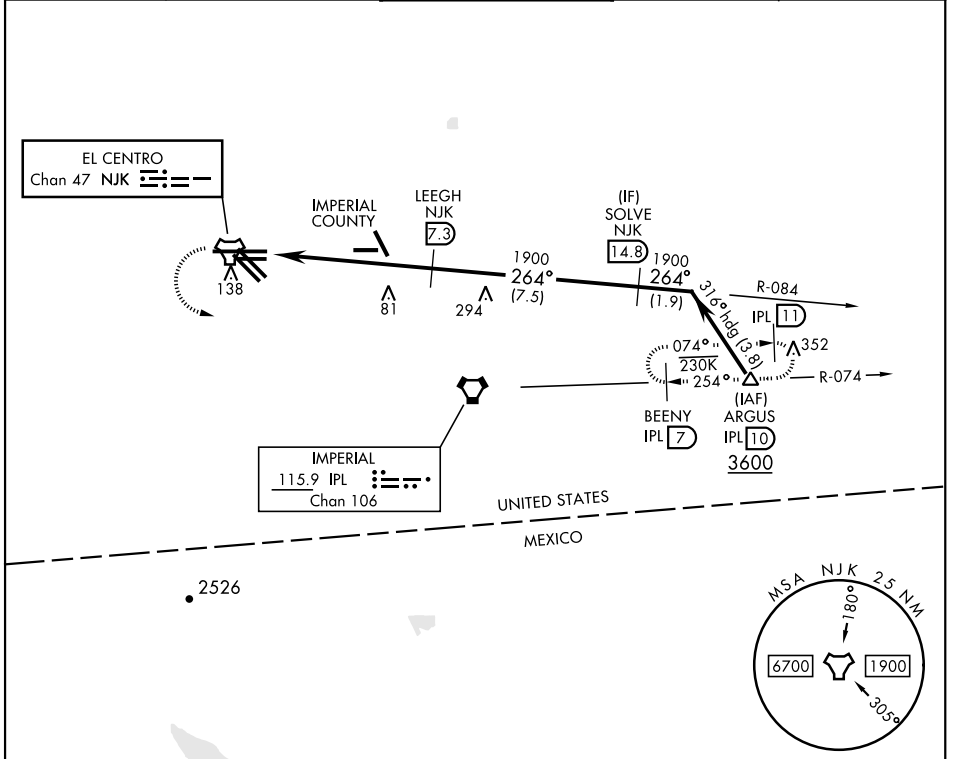
EL CENTRO NAF (VRACIU FLD) (KNJK)

TACAN NJK Chan 47	APCH CRS 264°	Rwy Idg TDZE Arpt Elev 9503 -46 -42
-----------------------------	-------------------------	---

[USN]

▼ Circling to Rwy 30 NA at night. MISSED APPROACH: Climb to 500, then climbing left turn to 2400 direct IPL VORTAC. Then direct BEENY via IPL R-074 and hold.

ATIS ★ 269.275	APP CON/DEP CON 128.55 292.2	TOWER ★ 119.1 360.2	GND CON 121.9 254.35	CLNC DEL 340.2
--------------------------	--	-------------------------------	--------------------------------	--------------------------

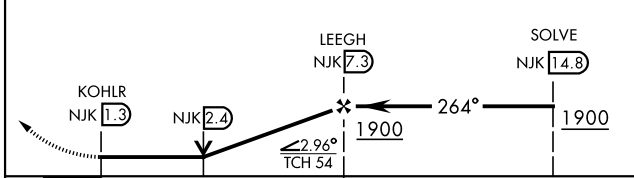


SW-3, 26 DEC 2024 to 23 JAN 2025

SW-3, 26 DEC 2024 to 23 JAN 2025

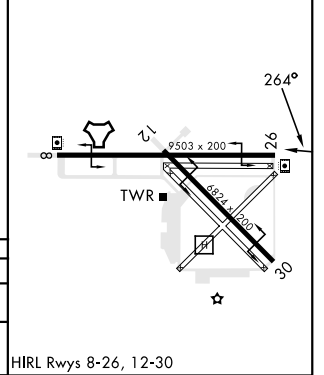
EMERG SAFE ALT 100 NM 17,000

500 ↑	2400 ↙	IPL R-074	BEENY IPL 7
----------	-----------	-----------	-------------



CATEGORY	A	B	C	D
S-26	380-1 426 (500-1)	380-1¼ 426 (500-1¼)		
C CIRCLING	480-1 522 (600-1)	480-1½ 522 (600-1½)	520-2 562 (600-2)	

ELEV -42	TDZE -46
----------	----------



HIRL Rwys 8-26, 12-30

EL CENTRO, CALIFORNIA
Orig 13JUL23

32°50'N-115°40'W

EL CENTRO NAF (VRACIU FLD) (KNJK)

TACAN RWY 26