

WAAS CH 93541 W10A	APP CRS 100°	Rwy Idg TDZE Apt Elev	5000 18 22
--	------------------------	-----------------------------	---------------------------------------

RNAV (GPS) RWY 10

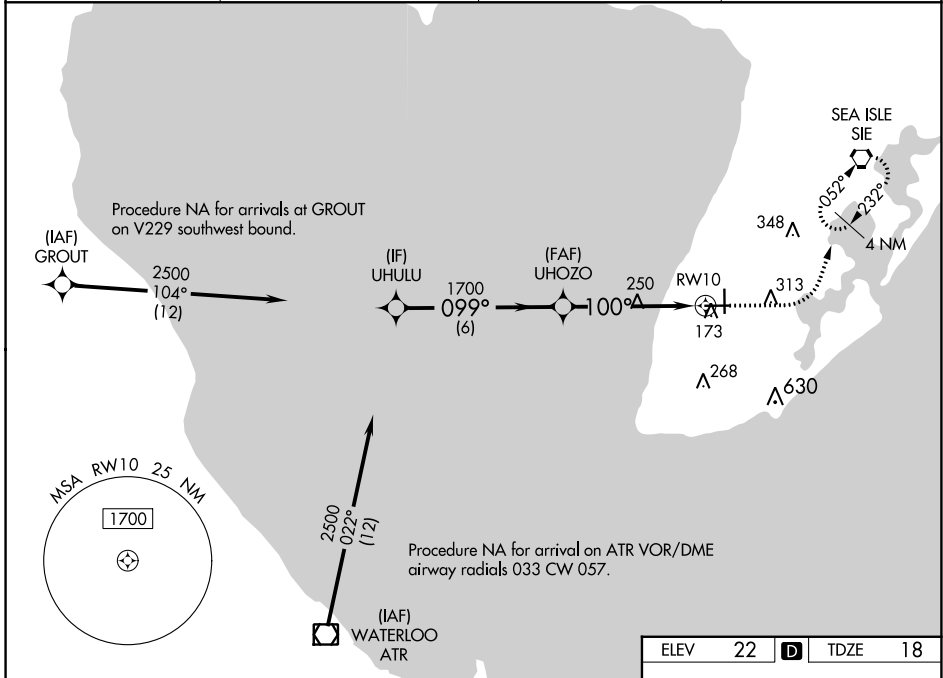
CAPE MAY COUNTY (WWD)

RNP APCH.

▼ For uncompensated Baro-VNAV systems, LNAV/VNAV NA below -15° C or above 54° C. Circling NA for Cats C and D northeast of Rwy 19 and 28. Rwy 10 helicopter visibility reduction below 3/4 SM NA. Circling Rwy 1 NA at night.

MISSED APPROACH: Climb to 500 then climbing left turn to 2000 direct SIE VORTAC and hold.

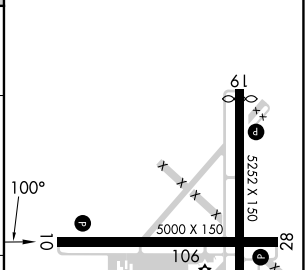
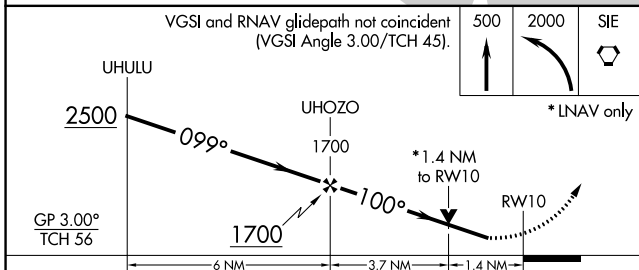
AWOS-3PT 118.275	ATLANTIC CITY APP CON 124.6 327.125	CLNC DEL 121.7	UNICOM 122.7 (CTAF) 0
----------------------------	---	--------------------------	---------------------------------



NE-2, 26 DEC 2024 to 23 JAN 2025

NE-2, 26 DEC 2024 to 23 JAN 2025

ELEV	22	D	TDZE	18
------	----	---	------	----



CATEGORY	A	B	C	D
LPV DA	285-7/8 267 (300-7/8)			
LNAV/VNAV DA	336-1 318 (400-1)			
LNAV MDA	500-1 482 (500-1)		500-1 3/8 482 (500-1 3/8)	
C CIRCLING	500-1 478 (500-1)	620-1 598 (600-1)	620-1 1/2 598 (600-1/2)	980-3 958 (1000-3)

HIRL Rwy 1-19 **0**
MIRL Rwy 10-28 **0**