

WAAS CH 86741 W28A	APP CRS 280°	Rwy lgt 5000 TDZE 19 Apt Elev 22
--	------------------------	---

RNAV (GPS) RWY 28

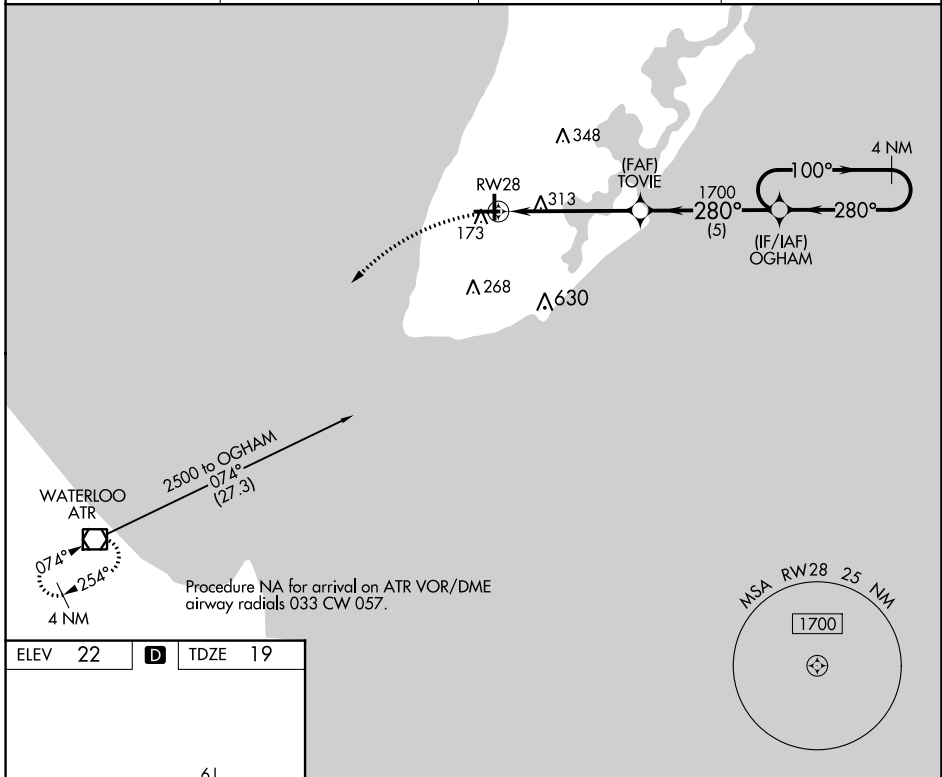
CAPE MAY COUNTY (WWD)

RNP APCH - GPS.

▼ For uncompensated Baro-VNAV systems, LNAV/VNAV NA below -15° C or above 54° C. Circling NA for Cats C and D northeast of Rwy 19 and 28. Rwy 28 helicopter visibility reduction below ¼ SM NA. Circling Rwy 1 NA at night.

MISSED APPROACH: Climbing left turn to 2500 direct ATR VOR/DME and hold.

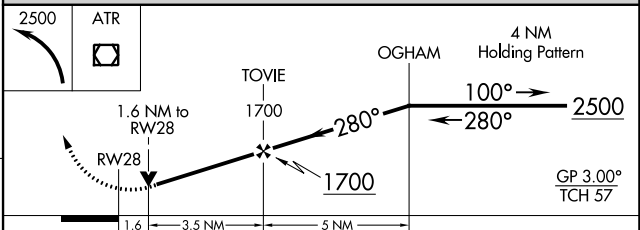
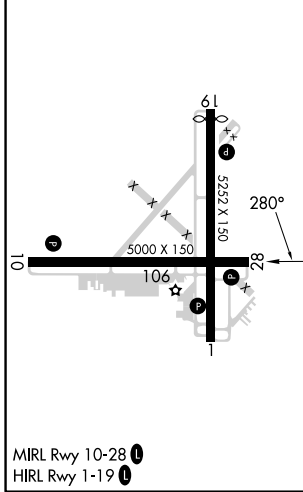
AWOS-3PT 118.275	ATLANTIC CITY APP CON 124.6 327.125	CLNC DEL 121.7	UNICOM 122.7 (CTAF) 1
----------------------------	---	--------------------------	---------------------------------



NE-2, 26 DEC 2024 to 23 JAN 2025

NE-2, 26 DEC 2024 to 23 JAN 2025

ELEV 22	D	TDZE 19
---------	----------	---------



CATEGORY	A	B	C	D
LPV DA		665-2½	646 (700-2½)	
LNAV/VNAV DA		634-2½	615 (700-2½)	
LNAV MDA	580-1	561 (600-1)	580-1½	561 (600-1½)
C CIRCLING	580-1 558 (600-1)	620-1 598 (600-1)	620-1½ 598 (600-1½)	980-3 958 (1000-3)