

WAAS CH <b>42629</b> <b>W13A</b>	APP CRS <b>128°</b>	Rwy Idg TDZE Apt Elev	<b>5997</b> <b>178</b> <b>178</b>
--	------------------------	-----------------------------	---

# RNAV (GPS) RWY 13

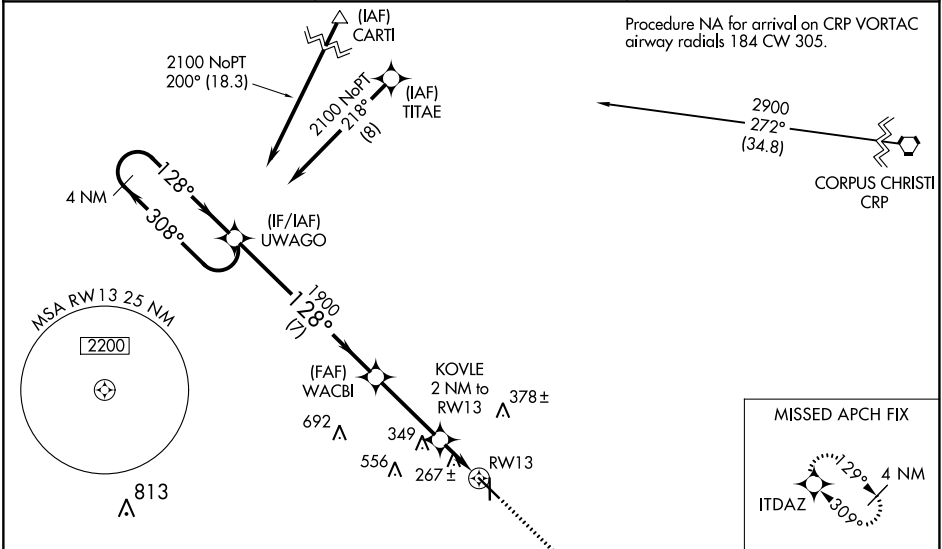
ALICE INTL (ALI)

RNP APCH.

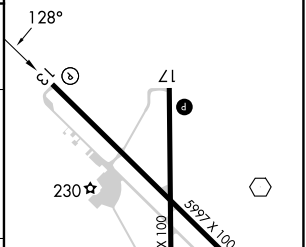
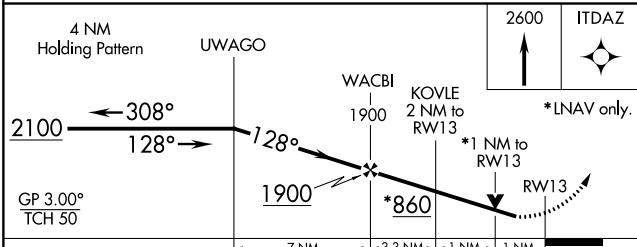
**⚠** Baro-VNAV NA when using Nueces County altimeter setting. For uncompensated Baro-VNAV systems, LNAV/VNAV NA below -3°C or above 42°C. When local altimeter setting not received, use Nueces County altimeter setting and increase all DA 56 feet and all MDA 60 feet, increase LPV and LNAV/VNAV visibility all Cats ¼ mile and LNAV Cat C and D ¼ mile. Rwy 13 helicopter visibility reduction below ¾ SM NA. VDP NA with Nueces County altimeter setting.

MISSED APPROACH: Climb to 2600 direct ITDAZ and hold.

ASOS <b>119.225</b>	KINGSVILLE APP CON * <b>119.9 290.45</b>	UNICOM <b>123.0 (CTAF) ①</b>
------------------------	---	---------------------------------



ELEV 178	TDZE 178
----------	----------



CATEGORY	A	B	C	D
LPV DA		428-¾ 250 (300-¾)		
LNAV/VNAV DA		428-¾ 250 (300-¾)		
LNAV MDA	560-1 382 (400-1)		560-1 ¾ 382 (400-1 ¾)	

REIL Rwy 13 ①  
MIRL Rwy 13-31 and 17-35 ①

SC-3, 26 DEC 2024 to 23 JAN 2025

SC-3, 26 DEC 2024 to 23 JAN 2025