


| | | | |
|--|------------------------|-----------------------------|---|
| WAAS CH 81813 W31A | APP CRS 309° | Rwy Idg TDZE Apt Elev | 5997 174 178 |
|--|------------------------|-----------------------------|---|

RNAV (GPS) RWY 31

ALICE INTL (ALI)

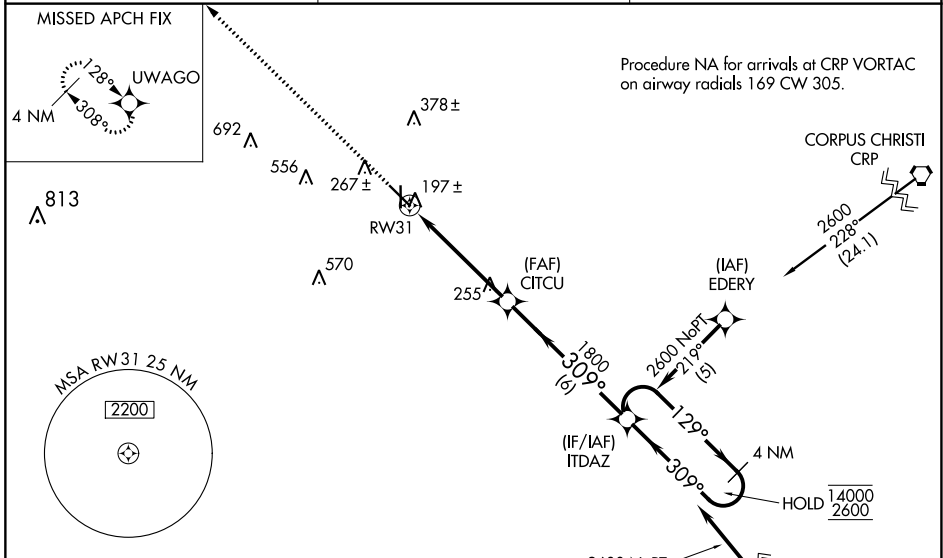
RNP APCH - GPS.

⚠ Baro-VNAV and VDP NA when using Nueces County altimeter setting. For uncompensated Baro-VNAV systems, LNAV/VNAV NA below -15°C or above 54°C. When local altimeter setting not received, use Nueces County altimeter setting: increase LPV DA to 494 feet, LNAV/VNAV DA to 524 feet; increase all MDA 60 feet and LNAV Cat C and D, and Circling Cat D visibility ¼ SM. For inop ALS, increase all LPV and LNAV/VNAV visibilities to ¾ SM. For inop ALS with Nueces County altimeter setting, increase all LPV visibilities to ¾ SM and LNAV Cat C and D visibility to 1/8 SM.

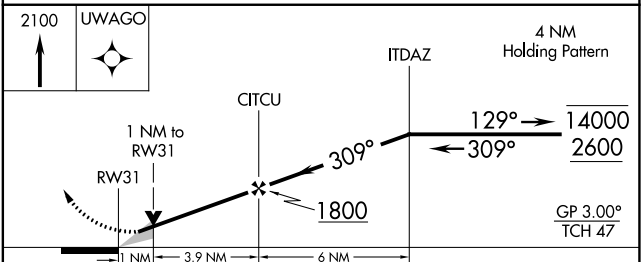
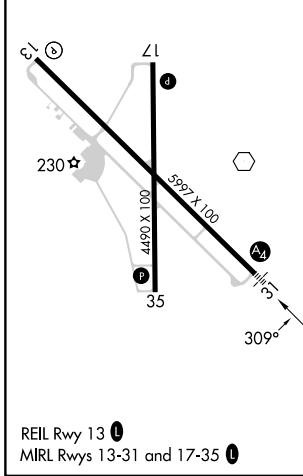
MALS 

MISSED APPROACH: Climb to 2100 direct UWAGO and hold.

| | | |
|------------------------|---|---------------------------------|
| ASOS 119.225 | KINGSVILLE APP CON * 119.9 290.45 | UNICOM 123.0 (CTAF) 0 |
|------------------------|---|---------------------------------|



| | |
|----------|----------|
| ELEV 178 | TDZE 174 |
|----------|----------|



| CATEGORY | A | B | C | D |
|--------------|----------------------|----------------------|------------------------|------------------------|
| LPV DA | | 437-¾ | 263 (300-¾) | |
| LNAV/VNAV DA | | 467-¾ | 293 (300-¾) | |
| LNAV MDA | | 520-¾ | 346 (400-¾) | |
| CIRCLING | 600-1 422 (500-1) | 640-1 462 (500-1) | 700-1½ 522 (600-1½) | 900-2¼ 722 (800-2¼) |

SC-3, 26 DEC 2024 to 23 JAN 2025

SC-3, 26 DEC 2024 to 23 JAN 2025