

ILS or LOC RWY 18L

LOC I-RUK 110.55	APCH CRS 175°	Rwy Idg TDZE Arprt Elev 9001 1382 1382
----------------------------	-------------------------	--

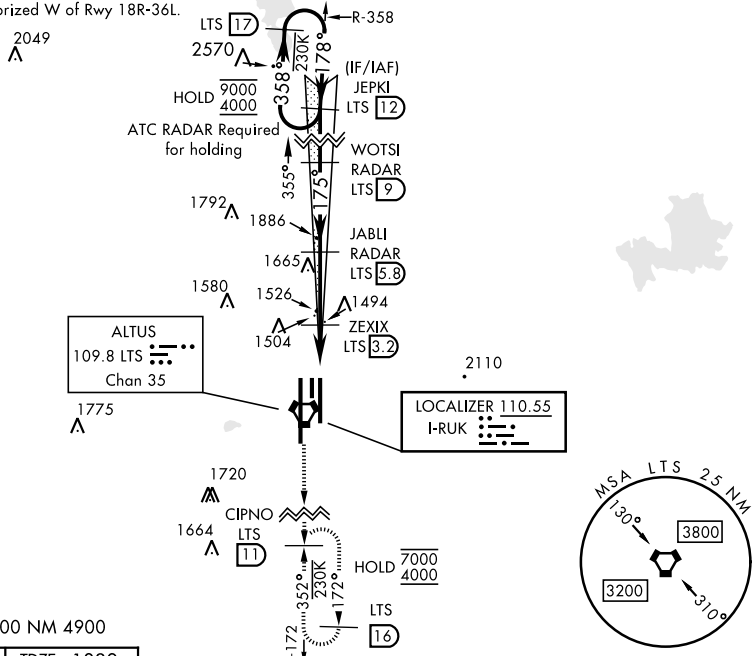
AL-482 [USAF]

ALTUS AFB (KLTS)

DME or RADAR required.	SALSF A2	MISSED APPROACH: Climb to 4000, intercept LTS VORTAC R-172 to CIPNO and hold.
------------------------	--------------------	---

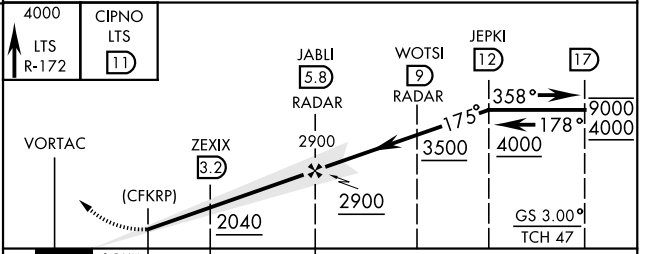
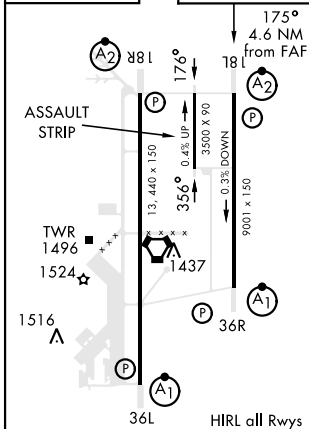
ATIS ★ 109.8 273.5	FORT WORTH CENTER 133.5 350.35	APP CON 125.1 353.7	TOWER ★ 119.65 254.4	GND CON 121.85 275.8	CLNC DEL 120.65 284.7
------------------------------	--	-------------------------------	--------------------------------	--------------------------------	---------------------------------

***Circling not authorized W of Rwy 18R-36L.



EMERG SAFE ALT 100 NM 4900

ELEV 1382	TDZE 1382
-----------	-----------



CATEGORY	A	B	C	D	E
S-ILS 18L	1582/40		200	(200-¾)	
S-LOC 18L*	1760/40		378	(400-¾)	
*** CIRCLING	1780-1 398 (400-1)	1840-1 458 (500-1)	1880-1½ 498 (500-1½)	2080-2¼ 698 (700-2¼)	2180-2¾ 798 (800-2¾)
WITHOUT LAST STEPDOWN FIX					
S-LOC 18L**	2040/40	658 (700-¾)	2040-1½	658	(700-1½)
*** CIRCLING	2040-1	658 (700-1)	2040-1½ 658 (700-1½)	2080-2¼ 698 (700-2¼)	2180-2¾ 798 (800-2¾)

ILS or LOC RWY 18L

SC-1, 26 DEC 2024 to 23 JAN 2025

SC-1, 26 DEC 2024 to 23 JAN 2025