

ALTUS, OKLAHOMA

ILS or RNAV (GPS) Y RWY 18R

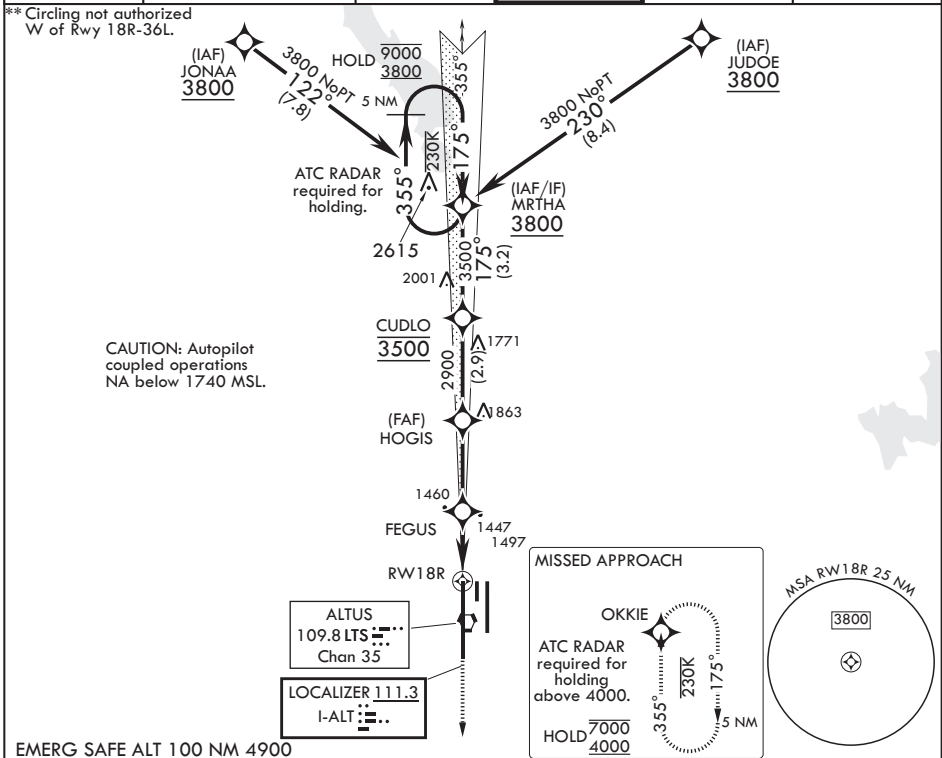
LOC I-ALT 111.3	APCH CRS 175°	Rwy ldg 13,440
		TDZE 1378
		Arp Elev 1382

AL-482 (USAF)

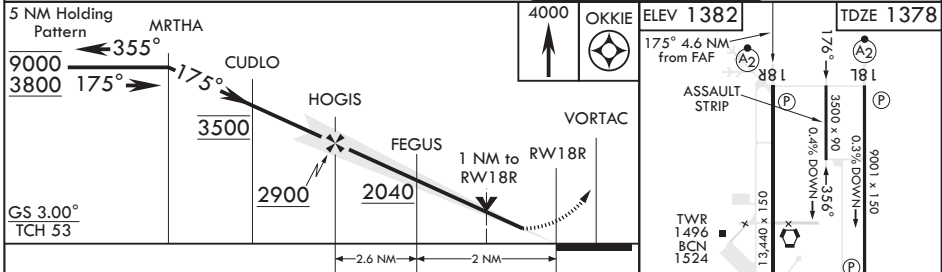
ALTUS AFB (KLTS)

RNP APCH. DME/DME RNP 0.3 NA	SALS	MISSED APPROACH: Climb to 4000 direct OKKIE and hold.
RNAV1 - GPS REQUIRED (for ILS)		
⚠ * When ALS inop, increase CAT A8 RVR to 55, vis to 1 mile; CAT CDE RVR to 60, vis to 1 1/8 miles.		

ATIS* 109.8 273.5	FORT WORTH CENTER 133.5 350.35	APP CON 125.1 353.7	TOWER* 119.65 254.4	GND CON 121.85 275.8	CLNC DEL 120.65 284.7
-----------------------------	--	-------------------------------	-------------------------------	--------------------------------	---------------------------------



EMERG SAFE ALT 100 NM 4900



CATEGORY	A	B	C	D	E
S-ILS 18R	1578/40		200	(200-3/4)	
RNAV MDA*	1760/40	382 (400-3/4)	1760/45	382 (400-7/8)	
CIRCLING**	1780-1 398 (400-1)	1840-1 458 (500-1)	1880-1 1/2 498 (500-1 1/2)	2080-2 1/4 698 (700-2 1/4)	2180-2 3/4 798 (800-2 3/4)

HIRL all Rwys

ALTUS, OKLAHOMA

34°40'N - 99°16'W

ALTUS AFB (KLTS)

Amdt 2 14JUL22

ILS or RNAV (GPS) Y RWY 18R

SC-1, 26 DEC 2024 to 23 JAN 2025

SC-1, 26 DEC 2024 to 23 JAN 2025