

ALTUS, OKLAHOMA

ILS or RNAV (GPS) Y RWY 36L

LOC I-LTS 110.3	APCH CRS 355°	Rwy Idg 13,440	TDZE 1354
		Arpt Elev 1382	

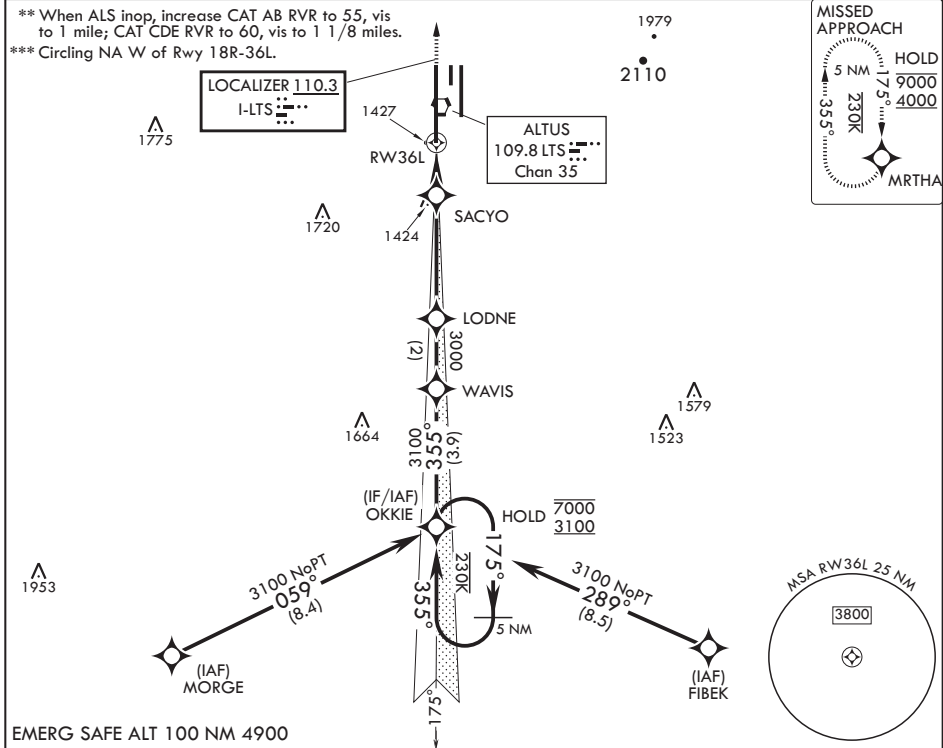
AL-482 (USAF)

ALTUS AFB (KLTS)

RNP APCH for LNAV	ALS-F1	MISSED APPROACH: Climb to 4000 direct MRTHA and hold.
RNAV1-GPS required for ILS.		
<p>⚠ * When ALS inop, increase CAT ABCDE RVR to 40, vis to 3/4 mile; RVR 18 authorized with use of FD or AP or HUD to DA.</p>		

ATIS* 109.8 273.5	FORT WORTH CENTER 133.5 350.35	APP CON 125.1 353.7	TOWER* 119.65 254.4	GND CON 121.85 275.8	CLNC DEL 120.65 284.7
-----------------------------	--	-------------------------------	-------------------------------	--------------------------------	---------------------------------

** When ALS inop, increase CAT AB RVR to 55, vis to 1 mile; CAT CDE RVR to 60, vis to 1 1/8 miles.
 *** Circling NA W of Rwy 18R-36L.



EMERG SAFE ALT 100 NM 4900

<p>OKKIE (12) WAVIS</p> <p>7000 3100 175° 355° 3100</p> <p>GS 3.00° TCH 55</p>		<p>4000 MRTHA</p> <p>ELEV 1382 TDZE 1354</p>			
<p>3000 1800</p> <p>3.5 NM 1.5 NM</p>		<p>ASSAULT STRIP</p> <p>TWR 1496 BCN 1524</p> <p>36R 36L</p> <p>13,440 x 1,500</p> <p>17.6° 355.6° 0.4% UP 0.3% UP</p> <p>3000 x 1,500</p> <p>3500 x 80</p> <p>36L</p> <p>355° 5 NM from FAF</p>			
CATEGORY	A	B	C	D	E
S-ILS 36L*	1554/24		200	(200-½)	
LNAV MDA**	1740/24	386 (400-½)	1740/35	386	(400-¾)
CIRCLING***	1780-1 398 (400-1)	1840-1 458 (500-1)	1880-1½ 498 (500-1½)	2080-2¼ 698 (700-2¼)	2180-2¾ 798 (800-2¾)

ALTUS, OKLAHOMA

34°40'N - 99°16'W

ALTUS AFB (KLTS)

Amdt 3 14JUL22
TERPS

ILS or RNAV (GPS) Y RWY 36L

SC-1, 26 DEC 2024 to 23 JAN 2025

SC-1, 26 DEC 2024 to 23 JAN 2025