

ALTUS, OKLAHOMA

RNAV (RNP) X RWY 18R

APCH CRS 175°	Rwy Idg 13,440
	TDZE 1378
	Arpt Elev 1382

AL-482 (USAF)

ALTUS AFB (KLTS)

RNP AR APCH - RF



MISSED APPROACH: Climb to 4000 on track 175° to OKKIE and hold.

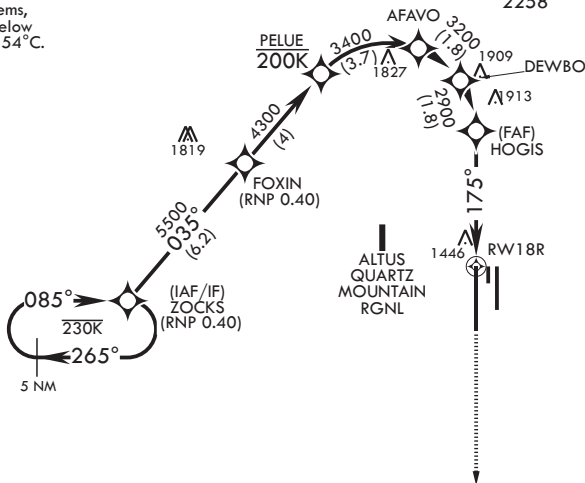
* When ALS inop, increase RVR to 45, vis to 7/8 mile.
** When ALS inop, increase RVR to 60, vis to 1 1/8 miles.

ATIS★ 109.8 273.5	APP CON 125.1 353.7	TOWER★ 119.65 254.4	GND CON 121.85 275.8	CLNC DEL 120.65 284.7
----------------------	------------------------	------------------------	-------------------------	--------------------------

For uncompensated Baro-VNAV systems, procedure NA below -17°C or above 54°C.

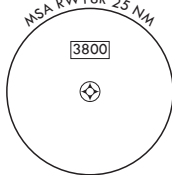
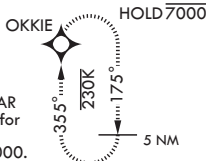
Max 200 KIAS until DEWBO

2258



**AUTHORIZATION
REQUIRED
FOR USE BY 97
AMW ACFT ONLY**

EMERG SAFE ALT 100 NM 4900



ZOCKS 8000	FOXIN 5500	PELUE 4300	AFAVO 3400	DEWBO 3200	HOGIS 2900	RWY 18R 1446	OKKIE 4000	ELEV 1382	TDZE 1378	
GP 3.00° TCH 53							tr 175°		175° to RWY 18R	
175°							176° DOWN		178 l	
4.6 NM							0.4% DOWN		0.3% DOWN	
CATEGORY							A		B	
RNP 0.10 DA*							1679/40		301	
RNP 0.30 DA**							1783/50		405	
							(300-3/4)		(500-1)	

ALTUS, OKLAHOMA

34°40'N - 99°16'W

ALTUS AFB (KLTS)

Amdt 2 14JUL22

RNAV (RNP) X RWY 18R

SC-1, 26 DEC 2024 to 23 JAN 2025

SC-1, 26 DEC 2024 to 23 JAN 2025