

ALTUS, OKLAHOMA

RNAV (RNP) X RWY 36L

APCH CRS	Rwy Idg	13,440
355°	TDZE	1354
	Arprt Elev	1382

AL-482 (USAF)

ALTUS AFB (KLTS)

RNP AR APCH - RF

ALSIF-1

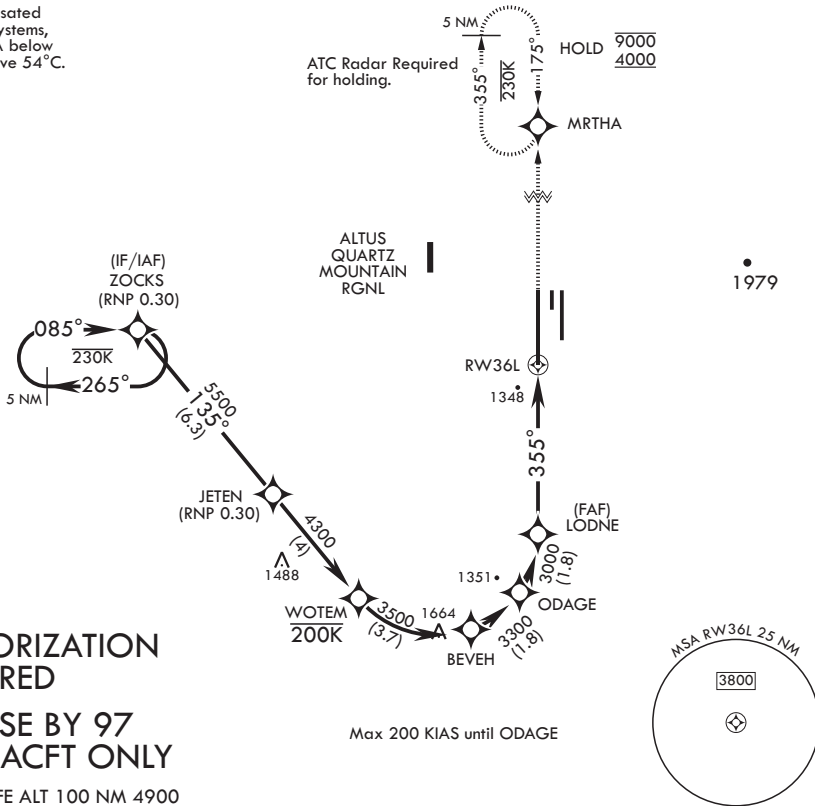
MISSED APPROACH: Climb to 4000 on track 355° to MRTHA and hold.

▼ * When ALS inop, increase RVR to 45, vis to 7/8 mile.
 ** When ALS inop, increase RVR to 55, vis to 1 mile.



ATIS★ 109.8 273.5	APP CON 125.1 353.7	TOWER★ 119.65 254.4	GND CON 121.85 275.8	CLNC DEL 120.65 284.7
----------------------	------------------------	------------------------	-------------------------	--------------------------

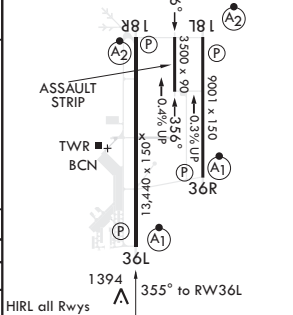
For uncompensated Baro-VNAV systems, procedure NA below -17°C or above 54°C.



AUTHORIZATION REQUIRED
FOR USE BY 97 AMW ACFT ONLY

EMERG SAFE ALT 100 NM 4900

ZOCKS	JETEN	WOTEM	BEVEH	ODAGE	LODNE	RW36L	4000	MRTHA	ELEV 1382	TDZE 1354
8000	5500	4300	3500	3300	3000	3000	tr 355°			
GP 3.00°										
TCH 55										
CATEGORY	A	B	C	D						
RNP 0.10 DA*	1646/24	292	(300-1/2)							
RNP 0.30 DA**	1732/35	378	(400-3/8)							



ALTUS, OKLAHOMA

34°40'N - 99°16'W

ALTUS AFB (KLTS)

Amdt 2 14JUL22

RNAV (RNP) X RWY 36L

SC-1, 26 DEC 2024 to 23 JAN 2025

SC-1, 26 DEC 2024 to 23 JAN 2025