

ALTUS, OKLAHOMA

RNAV (GPS) Z RWY 36L

APCH CRS	Rwy Idg	13,440
355°	TDZE	1354
	Arpt Elev	1382

AL-482 (USAF)

ALTUS AFB (KLTS)

RNP APCH. DME/DME RNP 0.3 NA

ALSF-1

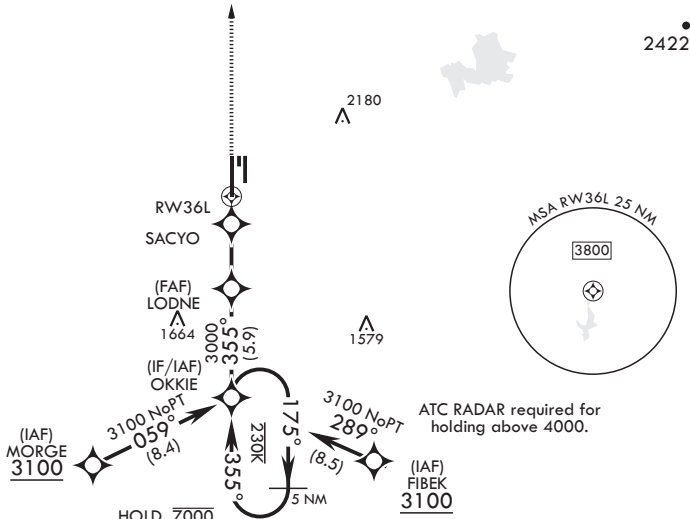
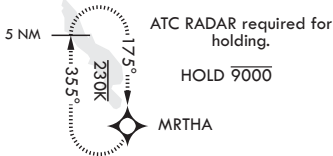
MISSED APPROACH: Climb to 4000 direct MRTHA and hold.

V * When ALS inop increase CAT AB RVR to 40, vis to 3/4 mile; CAT CD RVR to 45, vis to 7/8 mile; CAT E RVR to 50, vis to 1 mile.
 ** When ALS inop, increase CAT AB RVR to 55, vis to 1 mile; CAT CDE RVR to 60, vis to 1 1/8 miles.

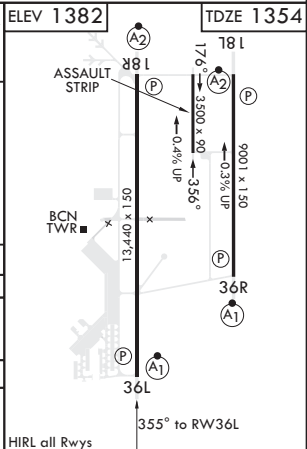
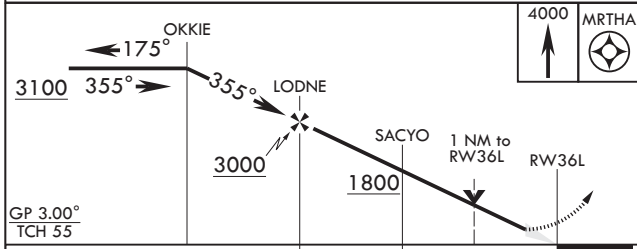
ATIS*	FORT WORTH CENTER	APP CON	TOWER*	GND CON	CLNC DEL
109.8 273.5	133.5 350.35	125.1 353.7	119.65 254.4	121.85 275.8	120.65 284.7

*** Circling NA W of Rwy 18R-36L.

For uncompensated Baro-VNAV systems, procedure NA below -17°C (2°F) or above 54° (130°F)



EMERG SAFE ALT 100 NM 4900



CATEGORY	A	B	C	D	E
LNAV/VNAV DA*	1604/24 250 (300-½)		1615/24 261 (300-½)	1634/24 280 (300-½)	1677/26 323 (300-½)
LNAV MDA**	1740/24 386 (400-½)		1740/35 386 (400-¾)		
C CIRCLING***	1780-1 398 (400-1)	1840-1 458 (500-1)	1880-1½ 498 (500-1½)	2080-2¼ 698 (700-2¼)	2180-2¾ 798 (800-2¾)

ALTUS, OKLAHOMA
Amdt 3 14JUL22

34°40'N - 99°16'W

ALTUS AFB (KLTS)

RNAV (GPS) Z RWY 36L

SC-1, 26 DEC 2024 to 23 JAN 2025

SC-1, 26 DEC 2024 to 23 JAN 2025