

VOR or TACAN-C

VORTAC LTS 109.8 Chan 35	APCH CRS 215°	Rwy Idg TDZE Arprt Elev N/A N/A 1382
--	-------------------------	--

AL-482 [USAF]

ALTUS AFB (KLTS)

RADAR, DME required.

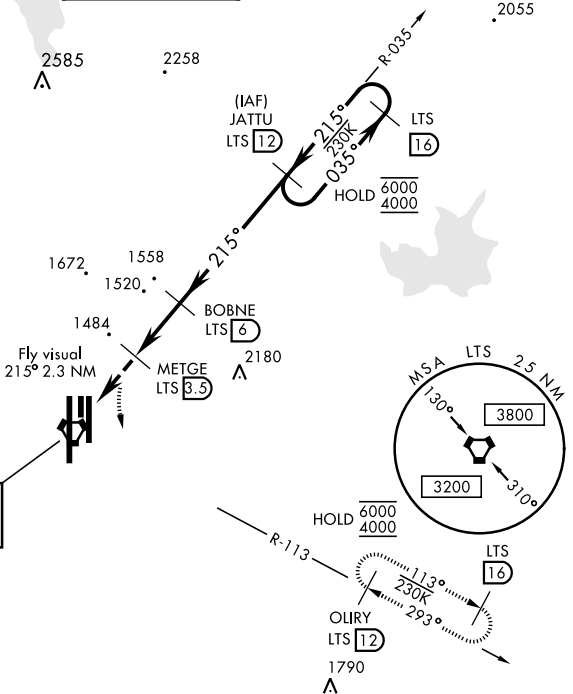
▼ Circling not authorized W of Rwy 18R-36L.

MISSED APPROACH: Climb to 2300, then climbing left turn to 4000 intercept LTS R-113 to OLIRY and hold.

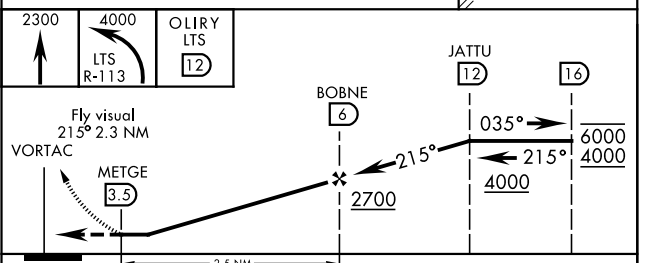
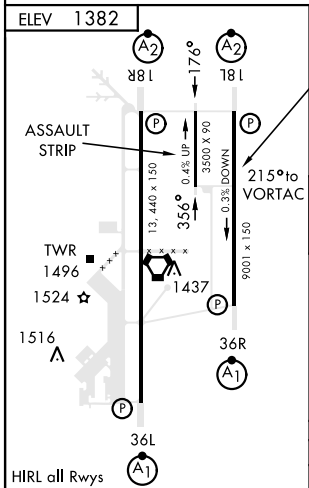
ATIS ★ 109.8 273.5	FORT WORTH CENTER 133.5 350.35	APP CON 125.1 353.7	TOWER ★ 119.65 254.4	GND CON 121.85 275.8	CLNC DEL 120.65 284.7
------------------------------	--	-------------------------------	--------------------------------	--------------------------------	---------------------------------

FOR USE BY 97 AMW ACFT ONLY

ALTUS
109.8 LTS
Chan 35



EMERG SAFE ALT 100 NM 4900



CATEGORY	D	E
<input checked="" type="checkbox"/> CIRCLING	2080-3 698 (700-3)	2180-3 798 (800-3)

VOR or TACAN-C

SC-1, 26 DEC 2024 to 23 JAN 2025

SC-1, 26 DEC 2024 to 23 JAN 2025