

WAAS CH 45700 W23A	APP CRS 234°	Rwy Idg TDZE 78 Apt Elev 79	4301
--	------------------------	---	-------------

RNAV (GPS) RWY 23

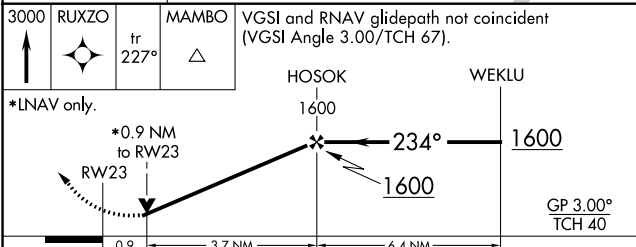
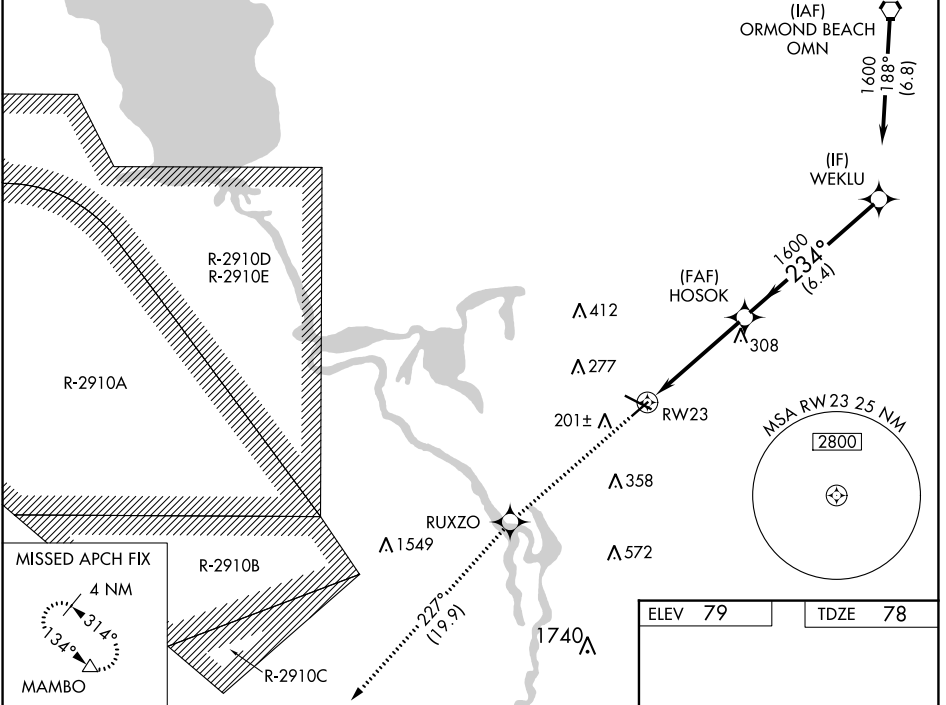
DELAND MUNI-SIDNEY H TAYLOR FLD (DED)

RNP APCH.

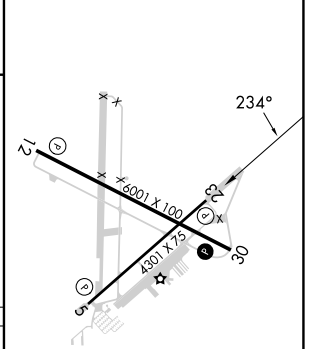
▼ For uncompensated Baro-VNAV systems, LNAV/VNAV NA below -15°C (5°F) or above 54°C (130°F).
 ▲ Baro-VNAV and VDP NA when using Daytona Beach Intl altimeter setting. Rwy 23 helicopter visibility reduction below 3/4 SM NA. When local altimeter setting not received, use Daytona Beach Intl altimeter setting and increase all DA 38 feet and all MDA 40 feet, increase LPV visibility 1/8 SM all Cats.

MISSED APPROACH: Climb to 3000 direct RUXZO and on track 227° to MAMBO and hold.

AWOS-3 119.575	DAYTONA APP CON 125.35 322.3	UNICOM 123.075 (CTAF) 0
--------------------------	--	-----------------------------------



ELEV 79	TDZE 78
----------------	----------------



CATEGORY	A	B	C	D
LPV DA	374-1		296 (300-1)	
LNAV/VNAV DA	414-1 1/4		336 (400-1 1/4)	
LNAV MDA	420-1		342 (400-1)	

HIRL Rwy 12-30
 MIRL Rwy 5-23
 REIL Rwy 12 and 30

SE-3, 26 DEC 2024 to 23 JAN 2025

SE-3, 26 DEC 2024 to 23 JAN 2025