

(MRIAS3.MRIAS) 23054

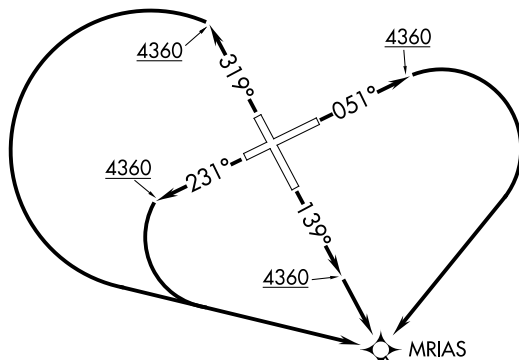
MRIAS THREE DEPARTURE (RNAV)

AL-484 (FAA)

CUT BANK INTL (CTB)
CUT BANK, MONTANA

SALT LAKE CITY CENTER
133.4 285.4
CTAF
123.0

**TOP ALTITUDE:
ASSIGNED BY ATC**

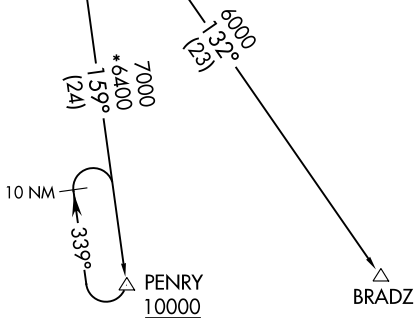


NOTE: GPS required.
 NOTE: Climb to 10000 in holding at PENRY if unable to meet crossing restriction.
 NOTE: RNAV 1

TAKEOFF MINIMUMS

Rwy 5, 14, 23, 32: Standard with minimum climb of 500' per NM to 4360.

NOTE: Chart not to scale.



DEPARTURE ROUTE DESCRIPTION

TAKEOFF RUNWAY 5: Climb heading 051° to 4360, then right turn direct MRIAS. Thence . . .

TAKEOFF RUNWAY 14: Climb heading 139° to 4360, then direct MRIAS. Thence . . .

TAKEOFF RUNWAY 23: Climb heading 231° to 4360, then left turn direct MRIAS. Thence . . .

TAKEOFF RUNWAY 32: Climb heading 319° to 4360, then left turn direct MRIAS. Thence . . .

. . . via transition.

BRADZ TRANSITION (MRIAS3.BRADZ)

PENRY TRANSITION (MRIAS3.PENRY)

MRIAS THREE DEPARTURE (RNAV)

(MRIAS3.MRIAS) 21JUL16

CUT BANK, MONTANA
CUT BANK INTL (CTB)

NW-1, 26 DEC 2024 to 23 JAN 2025

NW-1, 26 DEC 2024 to 23 JAN 2025