

WAAS CH 81918 W22A	APP CRS 221°	Rwy Idg TDZE 164 Apt Elev 170	6498
--	------------------------	---	-------------

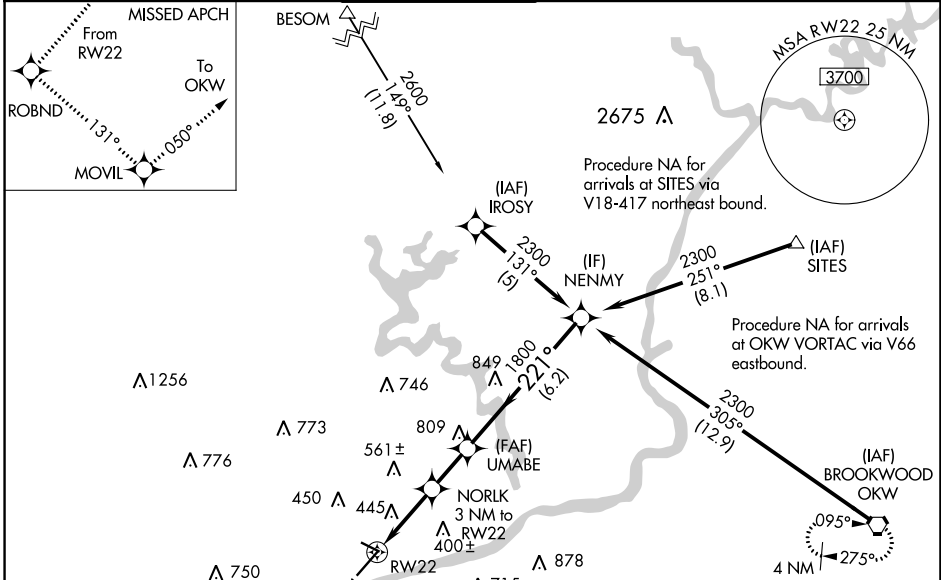
RNAV (GPS) RWY 22

TUSCALOOSA NTL (TCL)

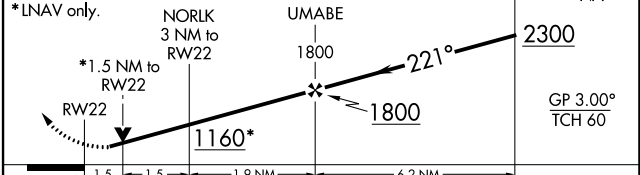
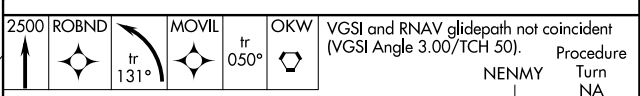
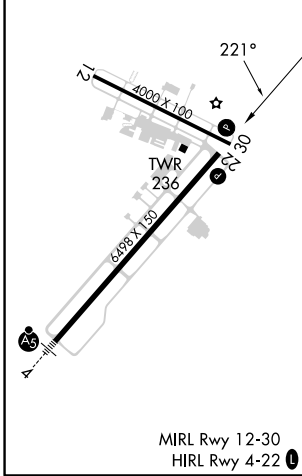
▼ For uncompensated Baro-VNAV systems, LNAV/VNAV NA below -15°C (5°F) or above 48°C (118°F). DME/DME RNP-0.3 NA. Helicopter visibility reduction below 3/4 SM NA. When local altimeter setting not received, use Birmingham altimeter setting: increase LPV DA to 760 feet and all visibilities 1/2 SM; increase LNAV/VNAV DA to 937 feet and all visibilities 3/4 SM; increase all MDAs 180 feet and visibility LNAV Cats C and D 1/2 SM and Circling Cat C 3/4 SM and Cat D 1/2 SM. Baro-VNAV and VDP NA when using Birmingham altimeter setting. Circling Rwy 12, 30 NA at night.

MISSED APPROACH: Climb to 2500 direct ROBND and left turn on track 131° to MOVIL and on 050° track to OKW VORTAC and hold.

ASOS 132.825	BIRMINGHAM APP CON 120.15 269.25	TUSCALOOSA TOWER ★ 126.3 (CTAF) 0 256.7	GND CON 121.8 257.95	CLNC DEL 120.775	UNICOM 122.95
------------------------	--	---	--------------------------------	----------------------------	-------------------------



ELEV 170	TDZE 164
-----------------	-----------------



CATEGORY	A	B	C	D
LPV DA		582-1½	418 (500-1½)	
LNAV/VNAV DA		759-2	595 (600-2)	
LNAV MDA	700-1	536 (600-1)	700-1½ 536 (600-1½)	700-1¾ 536 (600-1¾)
CIRCLING	720-1 550 (600-1)	800-1 630 (700-1)	960-2¼ 790 (800-2¼)	960-2½ 790 (800-2½)

SE-4, 26 DEC 2024 to 23 JAN 2025

SE-4, 26 DEC 2024 to 23 JAN 2025