

APP CRS	Rwy Idg	<b>4000</b>
<b>297°</b>	TDZE	<b>170</b>
	Apt Elev	<b>170</b>

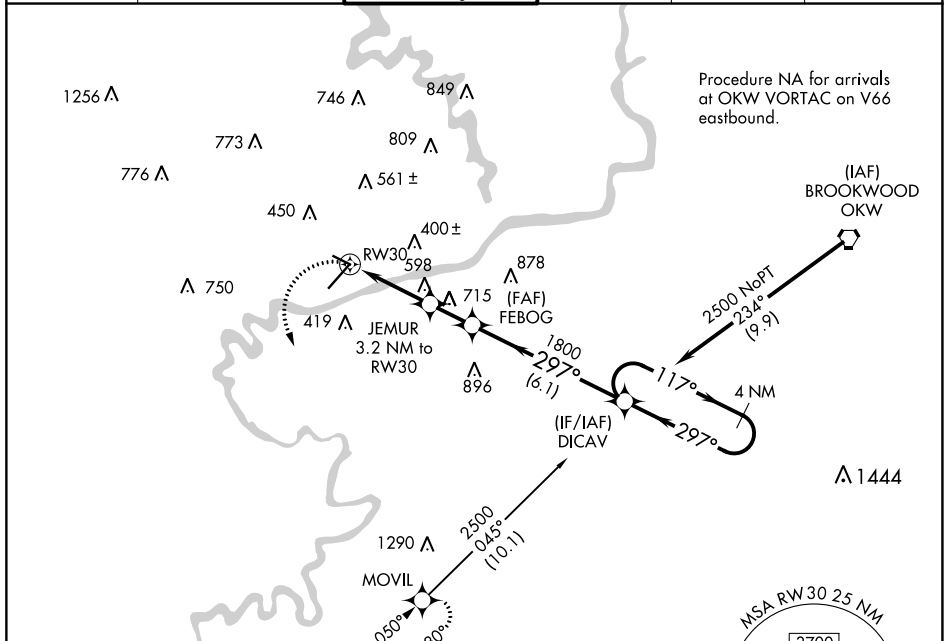
# RNAV (GPS) RWY 30

TUSCALOOSA NTL (TCL)

**⚠** DME/DME RNP-0.3 NA. Helicopter visibility reduction below 1 SM NA. When local altimeter setting not received, use Birmingham altimeter setting: increase all MDAs 180 feet and visibility LNAV Cats A and B ¼ SM, Cat C and D ½ SM, and Circling Cat C ¾ SM, Cat D ½ SM. Circling Rwy 12, 30 NA at night.

**MISSED APPROACH:** Climbing left turn to 3000 direct MOVIL and hold.

ASOS <b>132.825</b>	BIRMINGHAM APP CON <b>120.15 269.25</b>	TUSCALOOSA TOWER ★ <b>126.3 (CTAF) 0 256.7</b>	GND CON <b>121.8 257.95</b>	CLNC DEL <b>120.775</b>	UNICOM <b>122.95</b>
------------------------	--	---	--------------------------------	----------------------------	-------------------------

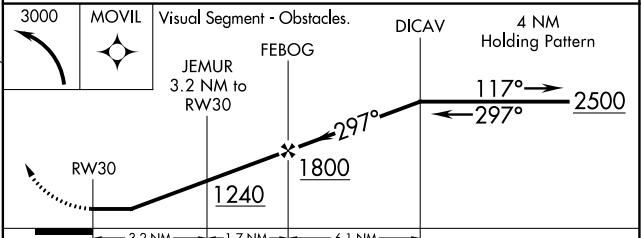
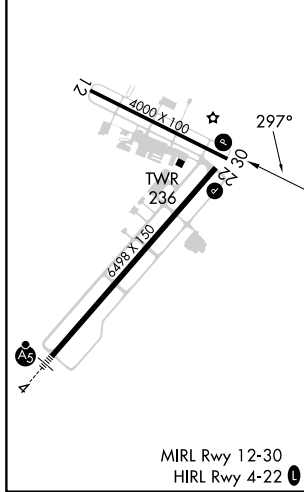


Procedure NA for arrivals at OKW VORTAC on V66 eastbound.

SE-4, 26 DEC 2024 to 23 JAN 2025

SE-4, 26 DEC 2024 to 23 JAN 2025

ELEV 170	TDZE 170
----------	----------



CATEGORY	A	B	C	D
LNAV MDA	900-1	730 (800-1)	900-2	730 (800-2)
CIRCLING	900-1	730 (800-1)	960-2¼ 790 (800-2¼)	960-2½ 790 (800-2½)